

Femtosecond laser dissection of neurons in *C. elegans*

Samuel Chung

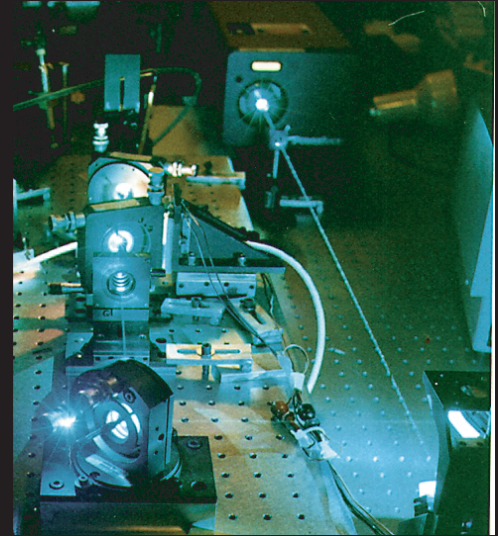


14 June 2005

Harvard University

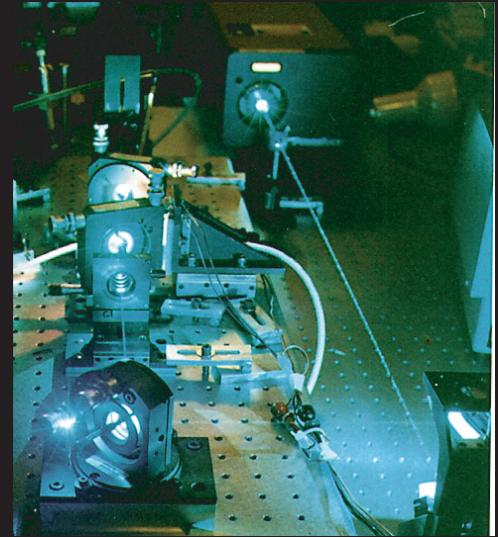
Historical Background

Mazur Group
Femtosecond laser physics



Historical Background

Mazur Group
Femtosecond laser physics

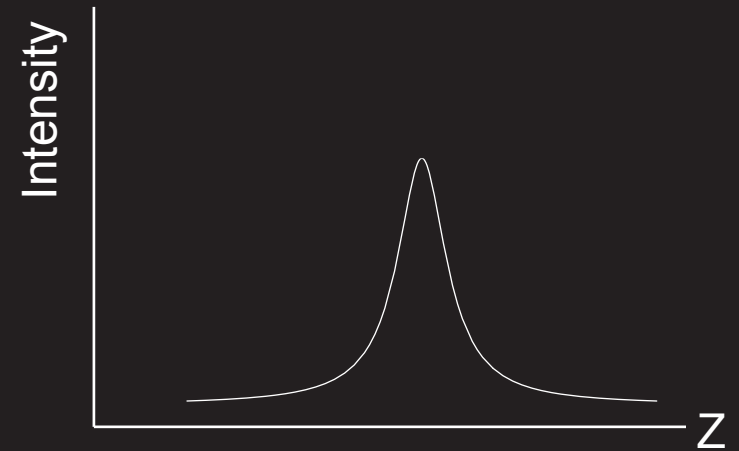


Samuel Group
C. elegans neurobiology



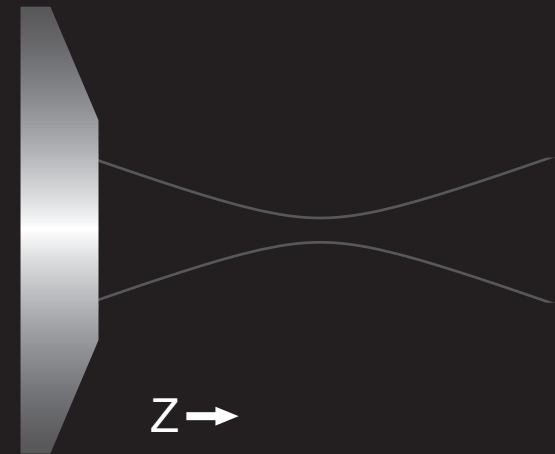
Nonlinear Absorption

Threshold intensity



Intensity equation

$$I \cong \frac{E}{A \tau} > I_{th}$$

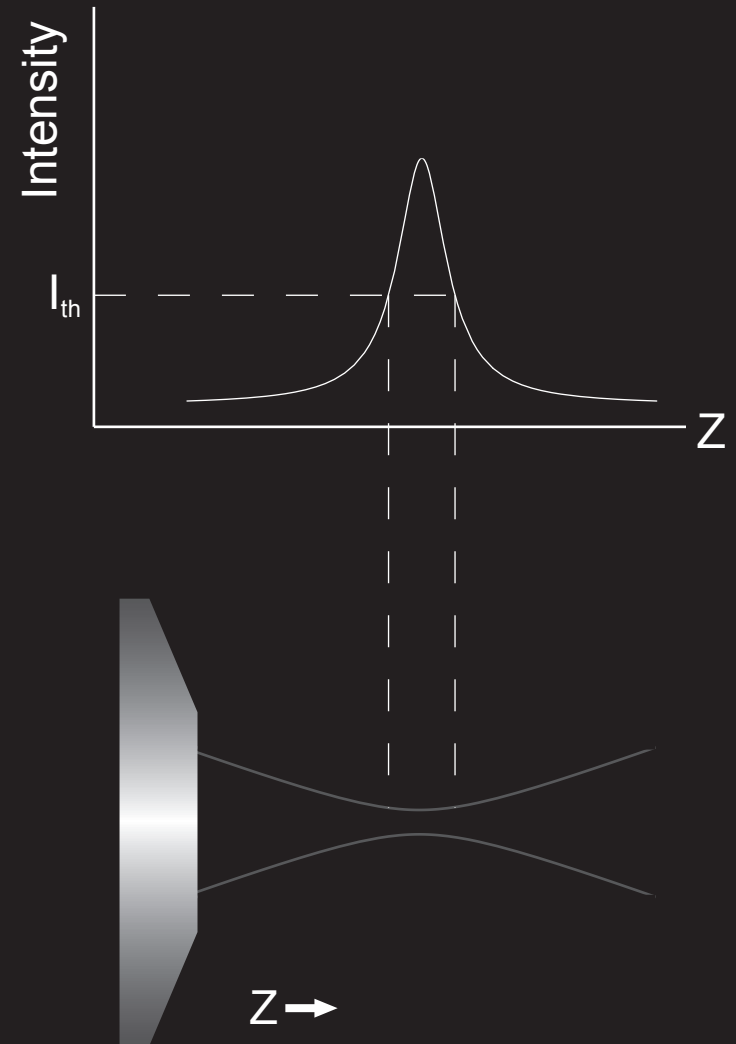


Nonlinear Absorption

Threshold intensity

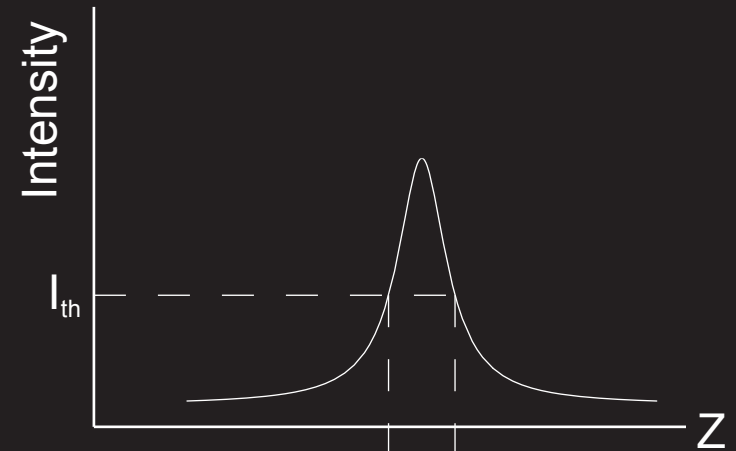
Intensity equation

$$I \cong \frac{E}{A \tau} > I_{th}$$



Nonlinear Absorption

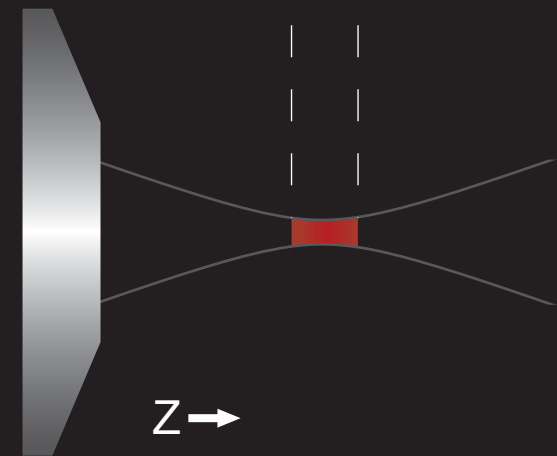
Threshold intensity



Intensity equation

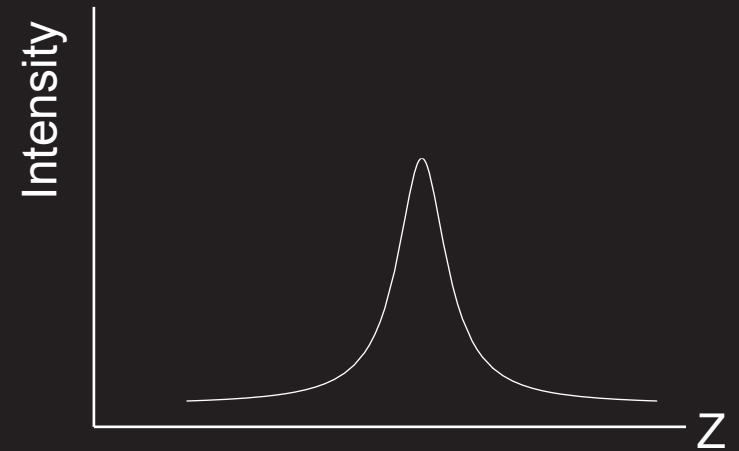
$$I \cong \frac{E}{A \tau} > I_{th}$$

Localized absorption near focus



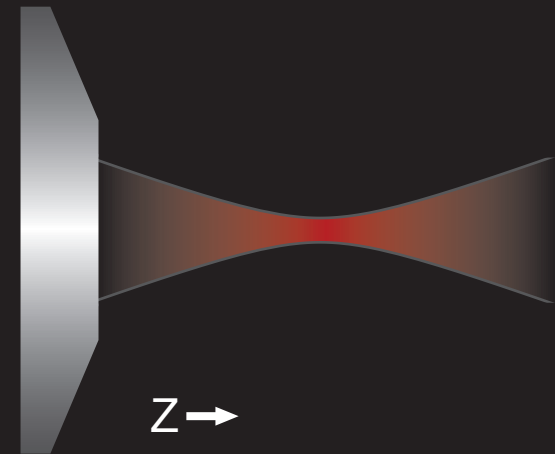
Nonlinear Absorption

Threshold intensity



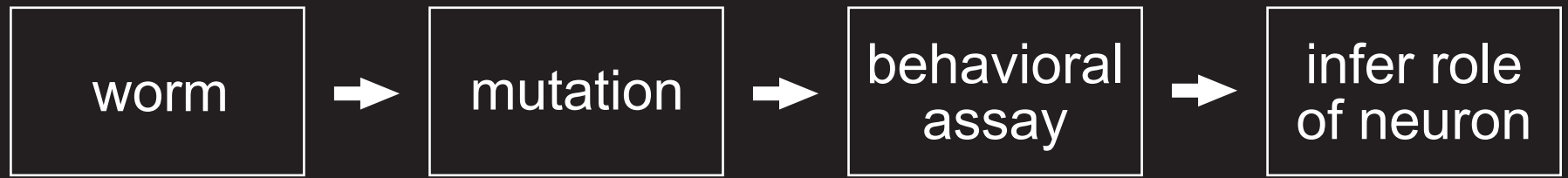
Intensity equation

$$I \cong \frac{E}{A \tau} > I_{th}$$



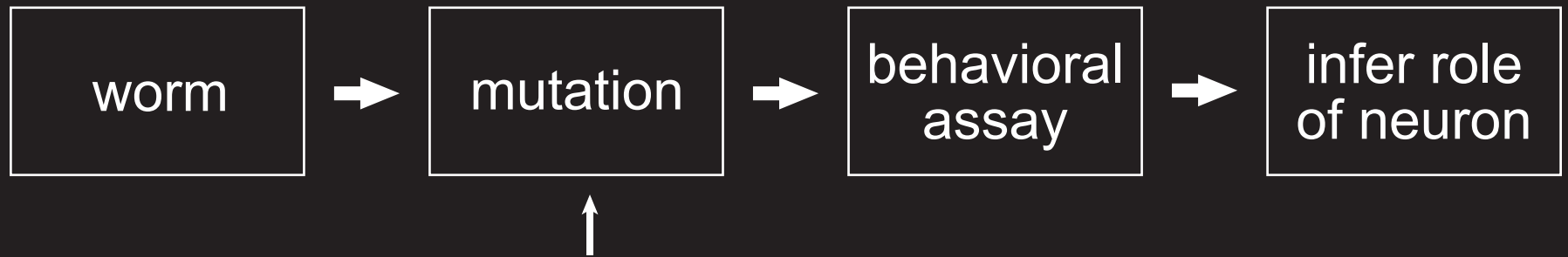
Mapping behavior to neurons

conventional method:



Mapping behavior to neurons

conventional method:



drawback: mutants may not exist or lack identification

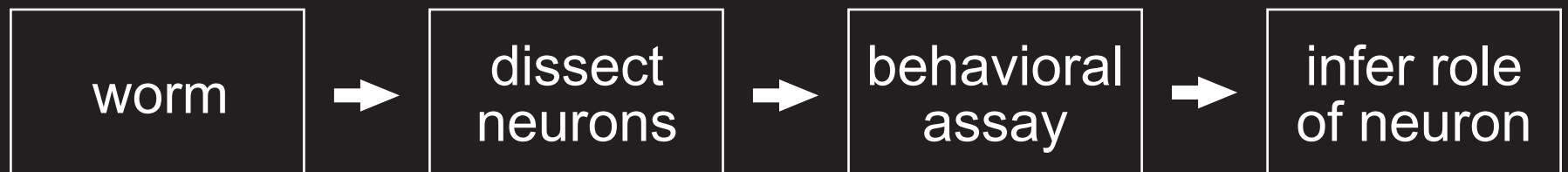
Biology Background

Mapping behavior to neurons

conventional method:

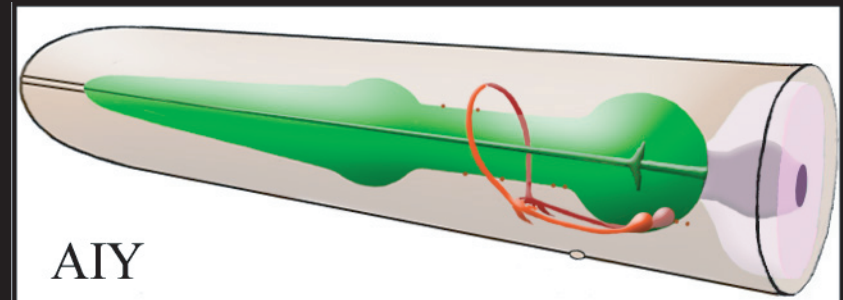
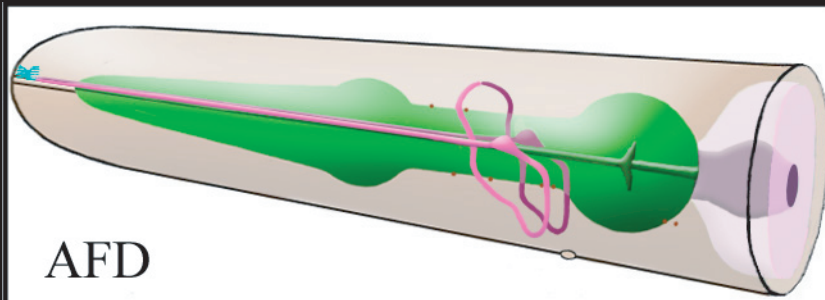


femtosecond laser dissection:

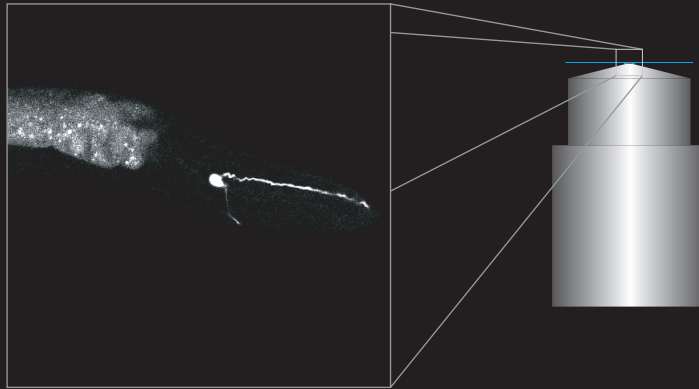


Biology Background

Neurons involved in thermotaxis



Laboratory Setup



1.4 NA objective

wavelength: 800 nm
pulse duration: 100 fs
repetition rate: 1 kHz

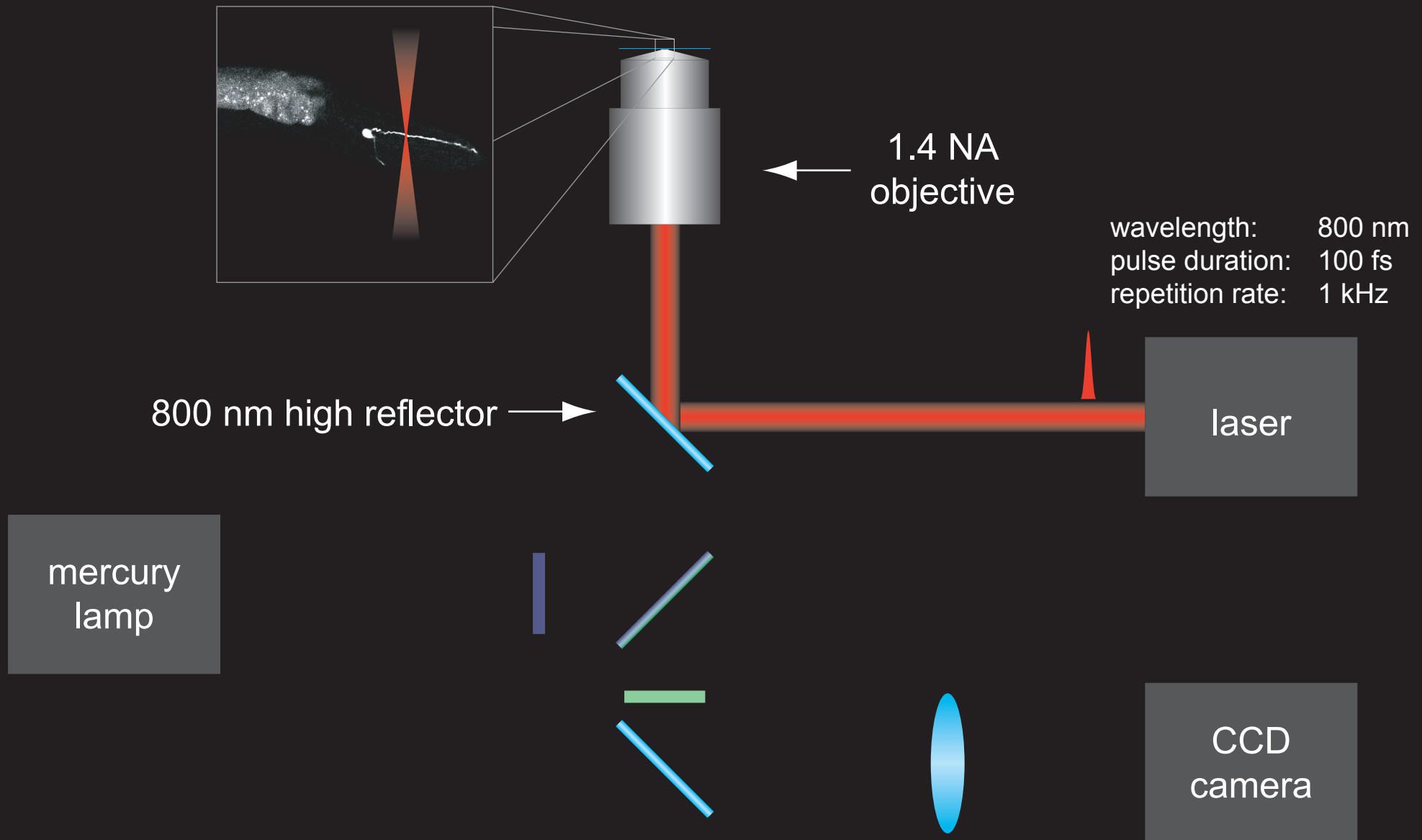
laser

mercury
lamp

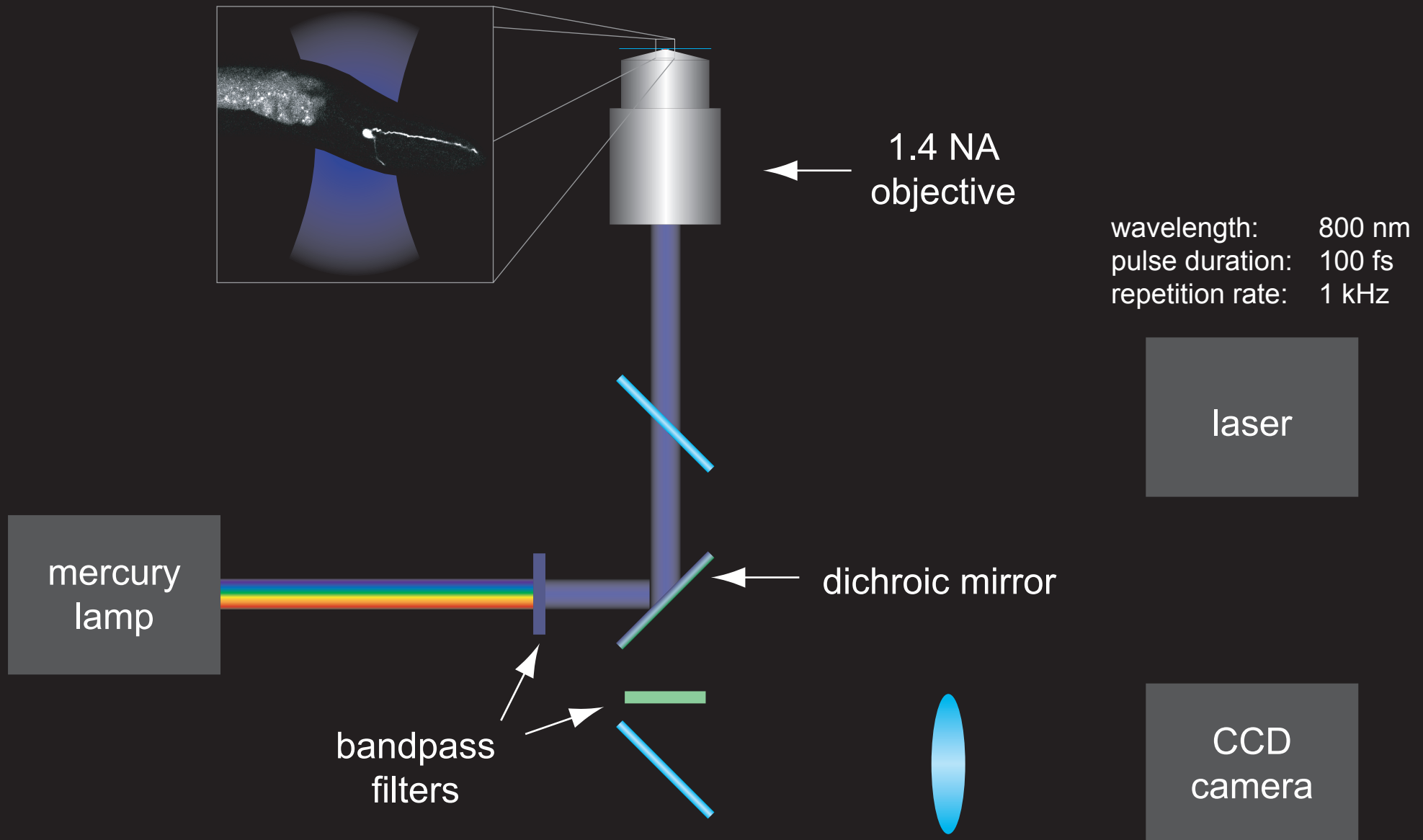
CCD camera



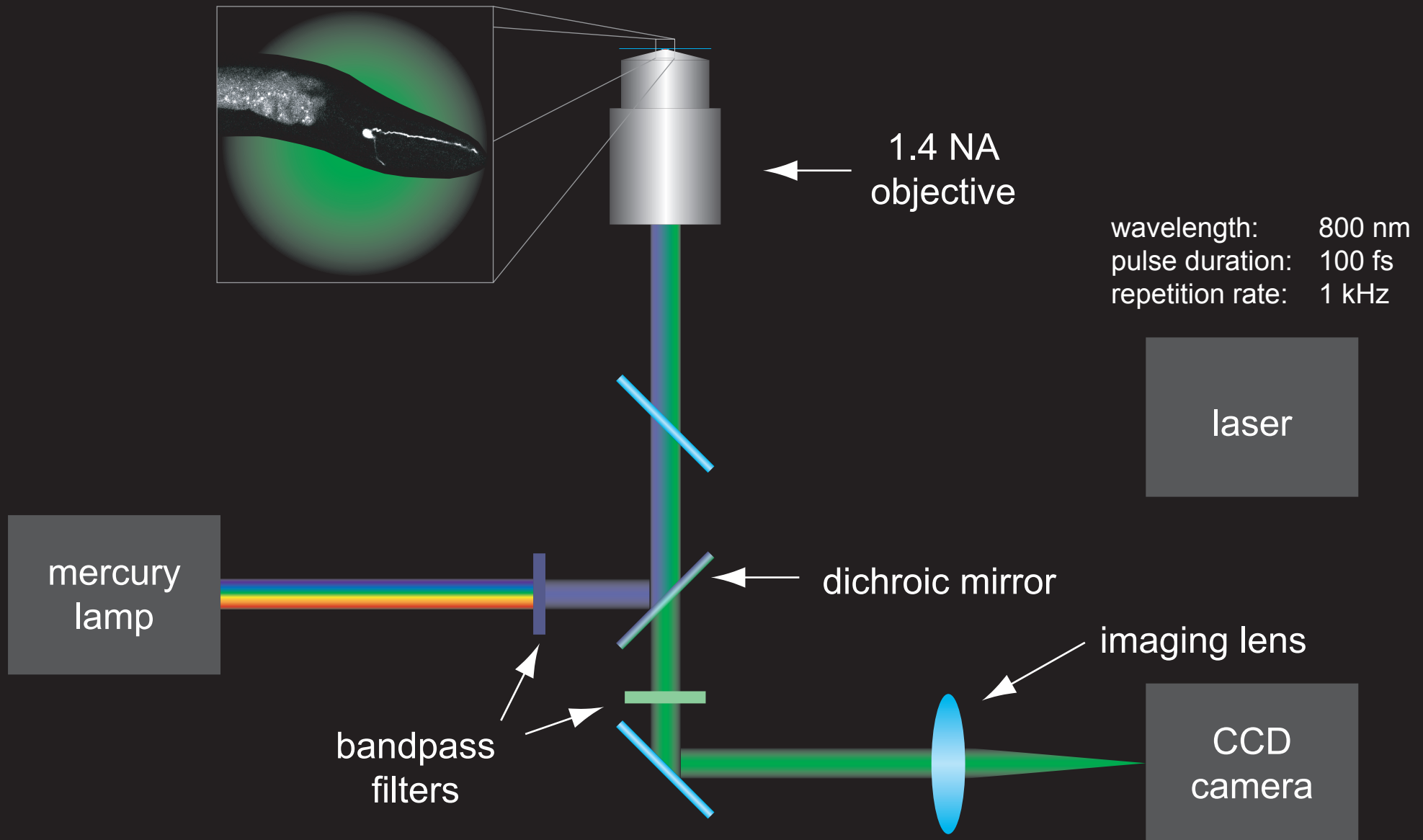
Laboratory Setup



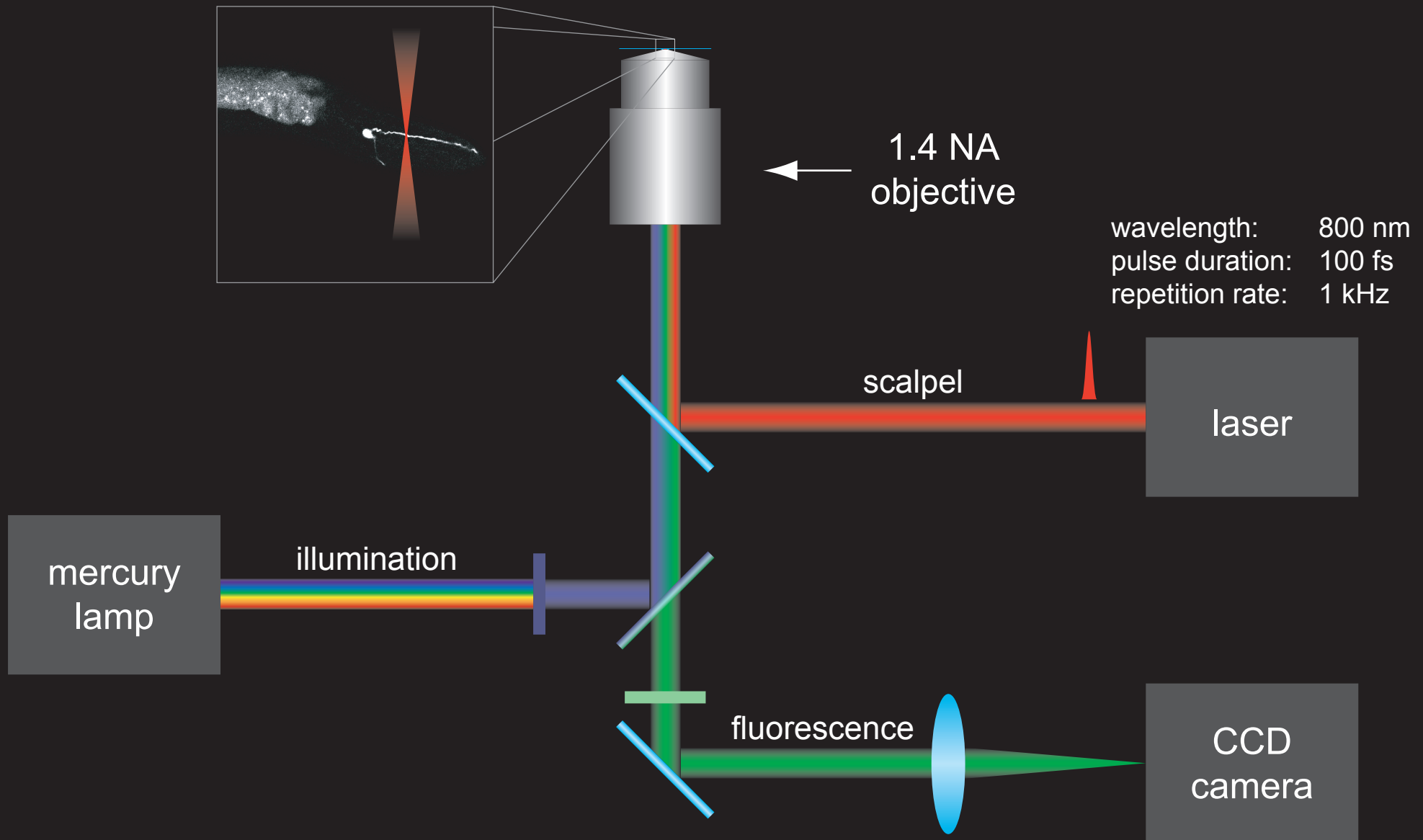
Laboratory Setup



Laboratory Setup

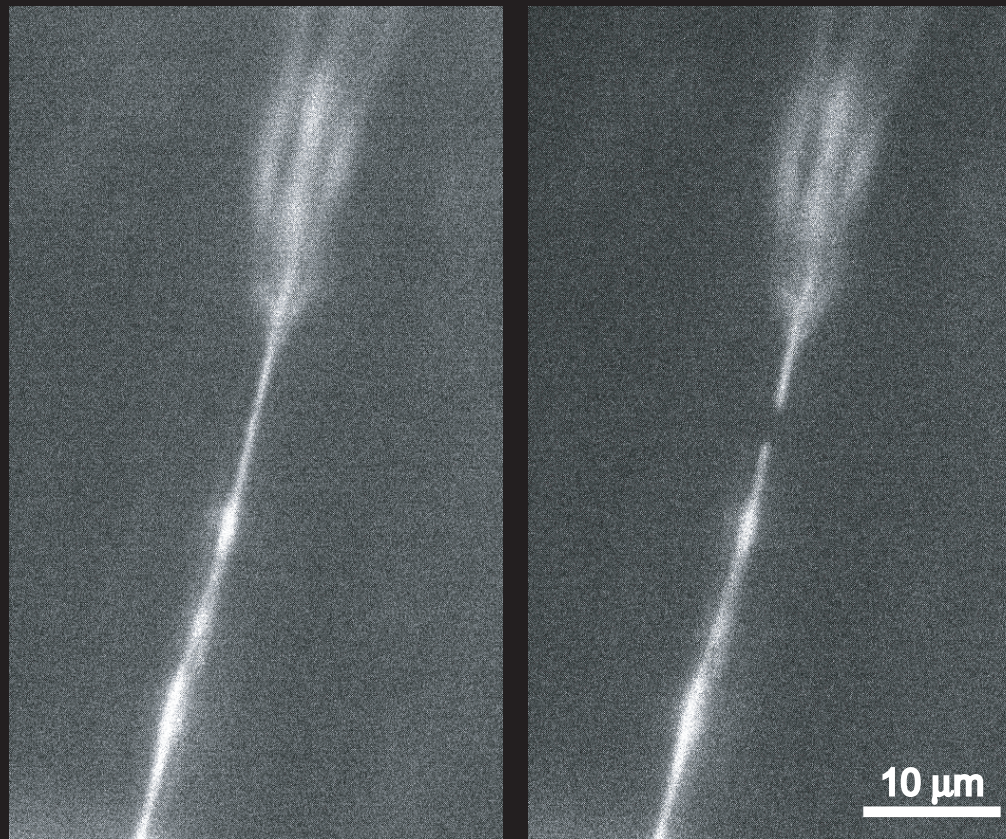


Laboratory Setup



Fluorescent Images

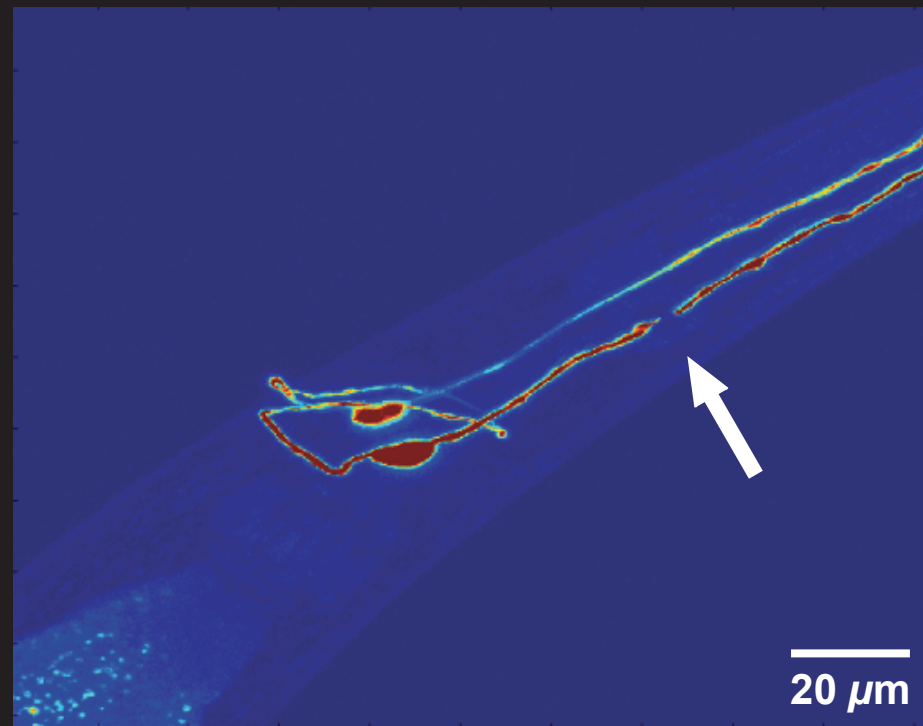
Clean cut of worm neuron from high-energy pulses



14 nJ pulses

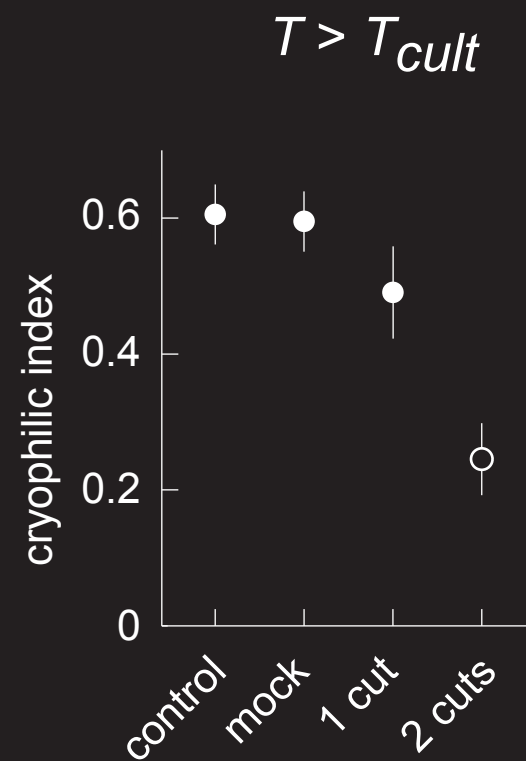
Fluorescent Images

Confocal microscope image of neurons
one day after surgery

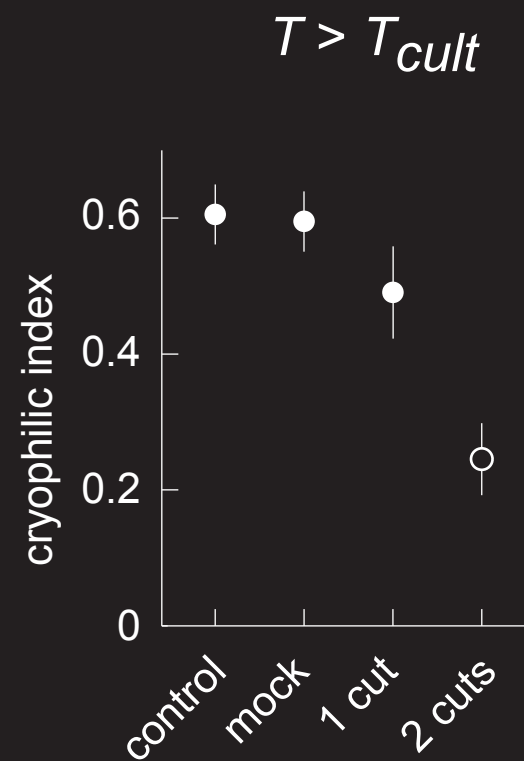


14 nJ pulses

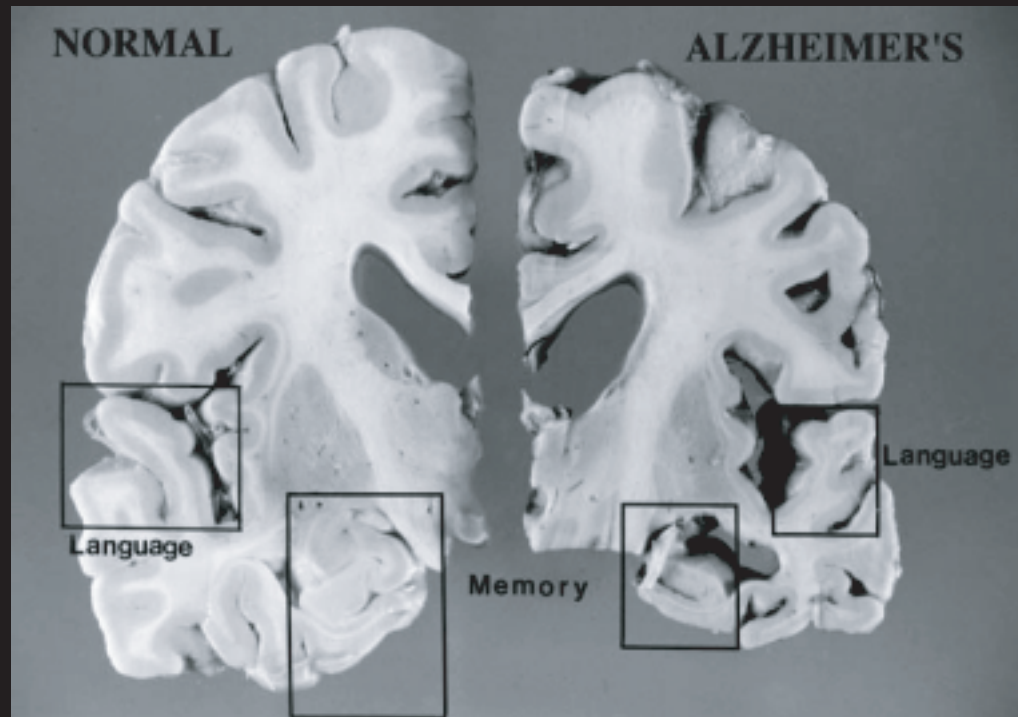
Behavioral assay



Behavioral assay



active
cryophilic drive
above T_{cult}
switched off



Neurodegeneration in *C. elegans* Application to Alzheimer's and Parkinson's Diseases

Acknowledgements

Advisor: Eric Mazur

Collaborator: Aravi Samuel