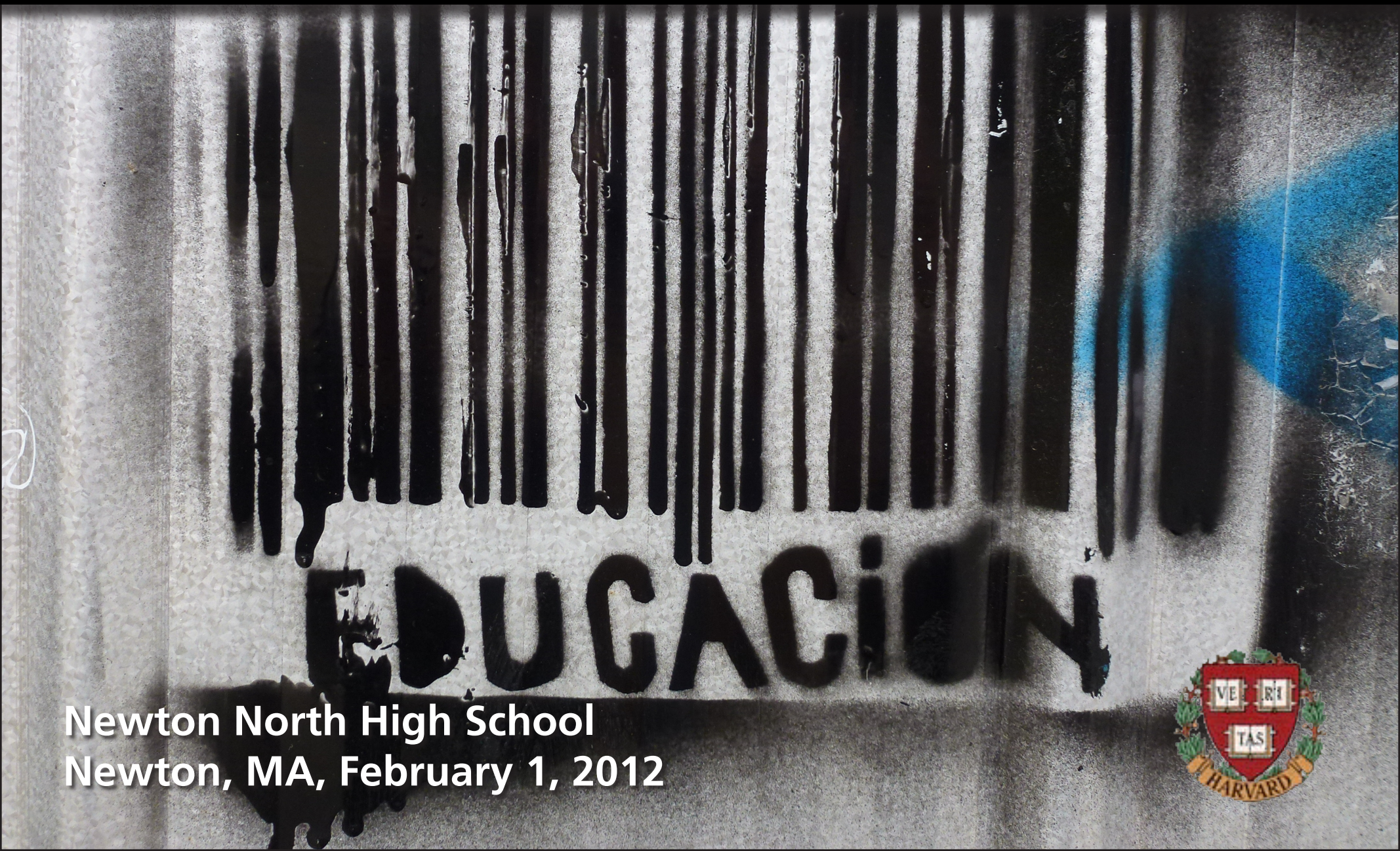


Catalyzing learning

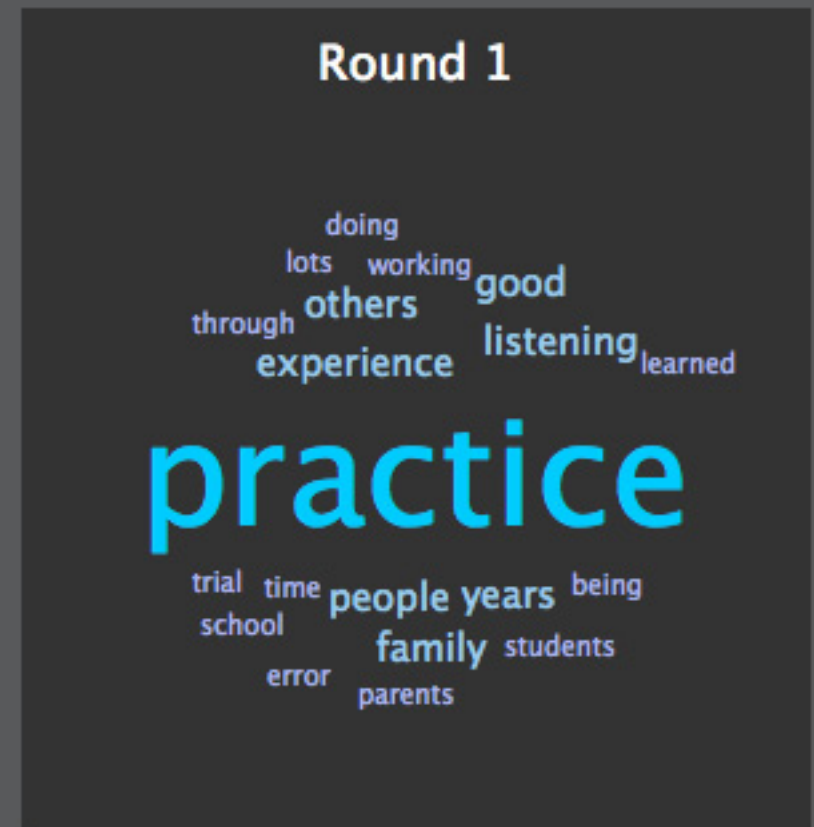


Newton North High School
Newton, MA, February 1, 2012



Class session: 123456

Now describe in a couple of words how you became good at whatever it is you entered in the previous question.









1 education

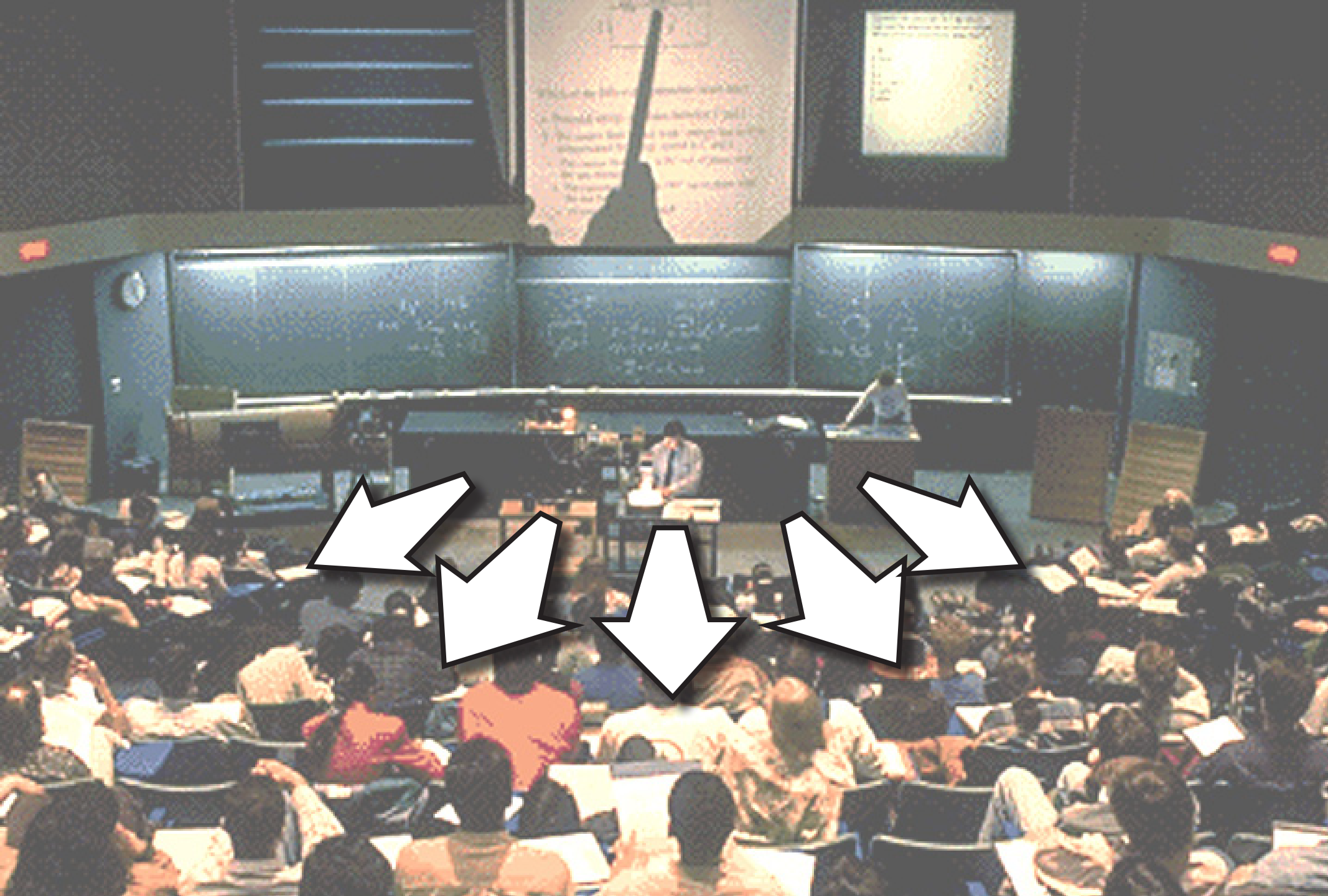
2 PI



1 education

2 PI

3 PI 2.0



The result?

EDUCACION

Lack of learning

EDUCACION

Lack of learning

Lack of retention



1 education

2 PI



1. transfer of information



1. transfer of information


2. assimilation of that information

- 
- 1. transfer of information (in class)**
 2. assimilation of that information



1. transfer of information (in class)

2. assimilation of that information (out of class)



**Should focus
on THIS!**

1. transfer of information (in class)

2. assimilation of that information (out of class)



1. transfer of information (in class)

2. assimilation of that information (out of class)



1. transfer of information (out of class)

2. assimilation of that information (in class)

Peer



1. transfer of information (out of class)

2. assimilation of that information (in class)

INSTRUCTION

question

1 education

2 PI

question



think

question



think



poll

question



think



poll



discuss

question



think



poll



discuss



repoll

question



think



poll



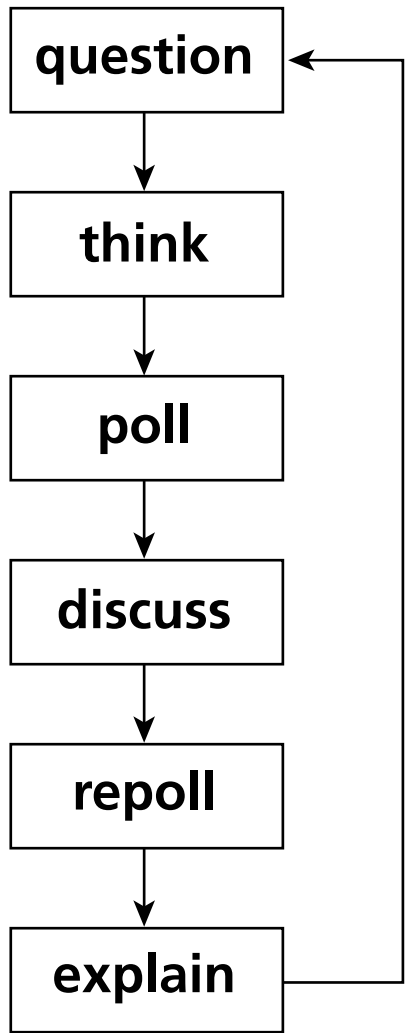
discuss

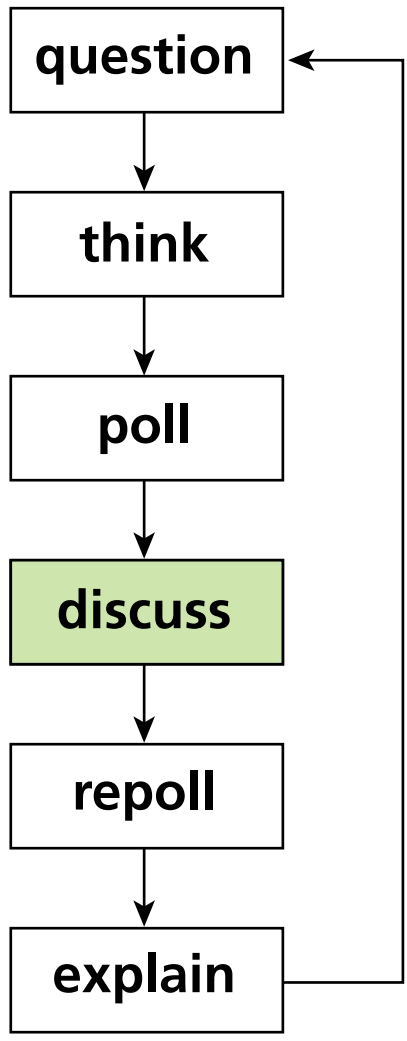


repoll



explain





Peer
Higher learning & gains

INSTRUCTION

1 education

2 PI

Higher learning gains

Better retention

INSTRUCTION



1 education

2 PI

3 PI 2.0

feedback

1 education

2 PI

3 PI 2.0



1991



1 education

2 PI

3 PI 2.0



1993

1 education

2 PI

3 PI 2.0



1998

1 education

2 PI

3 PI 2.0



2008

1 education

2 PI

3 PI 2.0



technology

1 education

2 PI

3 PI 2.0



How do I...

- design good questions?
- optimize the discussions?
- manage time?

Use intelligent algorithms and data analytics to...

- improve questioning
 - manage discussions
 - facilitate time management/flow
- learning | catalytics

- lowest
- a. A 30-year fixed rate mortgage at 12%
 - b. A 15-year fixed rate mortgage at 12%
 - c. A 30-year fixed rate mortgage at 12%
 - d. A 15-year fixed rate mortgage at 12%
2. The biggest factor that leads American companies to manufacture their products overseas in India is:
- a. Higher quality of craftsmanship
 - b. Lower labor costs
 - c. Decreased transportation costs
 - d. Effective legal systems
3. Which of the following correctly summarizes the accounting equation for a sole proprietorship?
- a. $\text{Assets} = \text{Liabilities} + \text{Owners' equity}$
 - b. $\text{Liabilities} = \text{Assets} + \text{Owners' equity}$
 - c. $\text{Owner's equity} = \text{Assets} + \text{Liabilities}$
 - d. $\text{Revenue} = \text{Assets} - \text{Liabilities}$
4. In order to present a business plan to a group of potential investors, a businessperson would most likely use which of the following?
- a. Powerpoint
 - b. Quickbooks
 - c. Peoplesoft
 - d. Excel
5. In order to start an online business, and individual would need all but which of the following:
- a. business model
 - b. depreciation?

extensible plug-in architecture for question types

- lowest
- A 30-year fixed rate mortgage at 12%
 - A 15-year fixed rate mortgage at 12%
 - A 30-year fixed rate mortgage at 12%
 - A 15-year fixed rate mortgage at 12%
2. The biggest factor that leads American companies to manufacture their products overseas in India is:
- Higher quality of craftsmanship
 - Lower labor costs
 - Decreased transportation costs
 - Effective legal systems
3. Which of the following correctly summarizes the accounting equation for a sole proprietorship?
- $\text{Assets} = \text{Liabilities} + \text{Owners' equity}$
 - $\text{Liabilities} = \text{Assets} + \text{Owners' equity}$
 - $\text{Owner's equity} = \text{Assets} + \text{Liabilities}$
 - $\text{Revenue} = \text{Assets} - \text{Liabilities}$
4. In order to present a business plan to a group of potential investors, a businessperson should most likely use which of the following?
- Powerpoint
 - Quickbooks
 - Peoplesoft
 - Excel
5. In order to start an online business, an individual would need all but which of the following:
- Business model
 - Appreciation?

Sample question types:

- direction
- expression
- long answer, short answer, word cloud (fill in text)
- multiple-choice, many-choice
- numerical (enter a number)
- ranking
- region (select point on image)
- sketch
- highlight passage

Sample question types:

- direction

- expression

- long answer, short answer, word cloud (fill in text)

- multiple-choice, many-choice

- numerical (enter a number)

- ranking

- region (select point on image)

- sketch

- highlight passage

learning | catalytics

[Courses](#) [Participate](#) [Review](#) [Classrooms](#) [Account](#) [Institutions](#) [Purchases](#) [Users](#) [Tour](#) [Help](#)

2. **word cloud** Now describe in a couple of words how you became good at whatever it is you entered in the previous question.



[Deliver](#)



[Show all results](#)

1 education

2 PI

3 PI 2.0

learning | catalytics

[Courses](#) [Participate](#) [Review](#) [Classroom](#) [Institutions](#) [Purchases](#) [Users](#) [Tour](#) [Help](#)

2. word of
question. e good at whatever it is you entered in the previous

 [Deliver](#)  [Show all results](#)



1 educa

3 PI 2.0

learning | catalytics

[Courses](#) [Participate](#) [Review](#) [Classroom](#) [Institutions](#) [Purchases](#) [Users](#) [Tour](#) [Help](#)

2. word of
question. e good at whatever it is you entered in the previous

[Deliver](#) [Show all results](#)

Round 1

● 123 responses

experiences
learning observing
reading people being
experience time

practice

work others school
working through family
good watching many
listening

✓ 61 get it now
✗ 4 still don't get it





Sample question types:

- direction
- expression
- long answer, short answer, word cloud (fill in text)
- multiple-choice, many-choice
- numerical (enter a number)
- ranking
- region (select point on image)
- sketch
- highlight passage

learning | catalytics

[Courses](#) [Participate](#) [Review](#) [Classrooms](#) [Account](#) [Institutions](#) [Purchases](#) [Users](#) [Tour](#) [Help](#)

6. short answer What is the most important nongenetic predictor of health?

 [Deliver](#)  [Show all results](#)

1 education

2 PI

3 PI 2.0

learning | catalytics

[Courses](#) [Participate](#) [Review](#) [Classroom](#) [Institutions](#) [Purchases](#) [Users](#) [Tour](#) [Help](#)

6. short

of health?

[Deliver](#) [Show all results](#)



1 educa



3 PI 2.0

learning | catalytics

[Courses](#) [Participate](#) [Review](#) [Classroom](#) [Institutions](#) [Purchases](#) [Users](#) [Tour](#) [Help](#)

6. short

of health?

 [Deliver](#)  [Show all results](#)

Round 1

● 9 responses

- behavior
- environment
- smoking
- socioeconomic status
- unhealthy life style
- lifestyle behaviors (exercise, diet, etc.)
- behavior
- public health
- environment



1 educa

3 PI 2.0

Sample question types:

- direction
- expression
- long answer, short answer, word cloud (fill in text)
- multiple-choice, many-choice
- numerical (enter a number)
- ranking
- region (select point on image)
- sketch
- highlight passage



1 blc.learningcatalytics.com **2** sign up **3** ID 1234567

learning | catalytics

[Courses](#) [Participate](#) [Review](#) [Classrooms](#) [Account](#) [Institutions](#) [Purchases](#) [Users](#) [Tour](#) [Help](#)

4. **direction** This image shows Oahu as seen from the Space Shuttle. The image provides several clues about the direction of prevailing winds in Oahu. Indicate this direction by drawing an arrow on your screen. [Deliver](#) [Show all results](#)

1 education

2 PI



3 PI 2.0

learning | catalytics

[Courses](#) [Participate](#) [Review](#) [Classroom](#) [Institutions](#) [Purchases](#) [Users](#) [Tour](#) [Help](#)

4. direction
prevailing

...le. The image provides several clues about the direction of
...on your screen.

 [Deliver](#)  [Show all results](#)



1 educa

3 PI 2.0

learning | catalytics

Courses Participate Review Classroom Institutions Purchases Users Tour Help

4. direction
prevailing

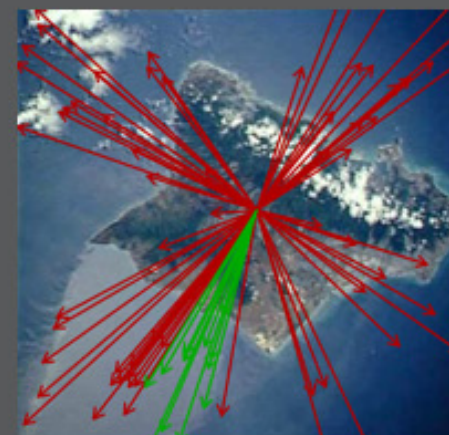
...le. The image provides several clues about the direction of
...on your screen.

Deliver Show all results



Round 1

77 responses, 16% correct



✓ 17 get it now
✗ 3 still don't get it

learning | catalytics

[Courses](#) [Participate](#) [Review](#) [Classrooms](#) [Account](#) [Institutions](#) [Purchases](#) [Users](#) [Tour](#) [Help](#)

optics i

current session: 766079 | 69 students

[Back to all lectures](#) [Stop session](#) [Review results](#) [Seat map](#) [Show floating session ID](#) [Edit](#) [Delete](#)



Jump to ▾

1

2

3

4

5

6

7

8

9

10

11

12

13

14

15



4. direction Light enters horizontally into the combination of two perpendicular mirrors as shown below.

[Deliver](#) [Show all results](#)



Indicate the direction of the incident light after it reflects off of both mirrors.



feedback & support

1 education

2 PI

3 PI 2.0

learning | catalytics

[Courses](#) [Participate](#) [Review](#) [Classifications](#) [Purchases](#) [Users](#) [Tour](#) [Help](#)

current session: **766079** | 69 students

[Map](#) [Show floating session ID](#) [Edit](#) [Delete](#)

6 7 8 9 10 11 12 13 14 15

perpendicular mirrors as shown below.

[Deliver](#) [Show all results](#)

[feedback & support](#)



learning | catalytics

[Courses](#) [Participate](#) [Review](#) [Classifications](#) [Purchases](#) [Users](#) [Tour](#) [Help](#)

current session: **766079** | 69 students

[Map](#) [Show floating session ID](#) [Edit](#) [Delete](#)

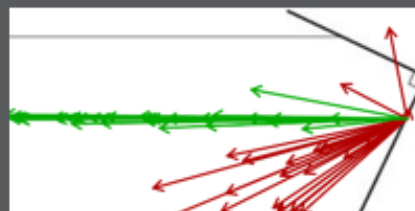
6 7 8 9 10 11 12 13 14 15



perpendicular mirrors as shown below.

[Deliver](#) [Show all results](#)

Round 1
● 57 responses, 58% correct



[feedback & support](#)



learning | catalytics

[Courses](#) [Participate](#) [Review](#) [Classifications](#) [Purchases](#) [Users](#) [Tour](#) [Help](#)

current session: **766079** | 69 students

[Map](#) [Show floating session ID](#) [Edit](#) [Delete](#)

6 7 8 9 10 11 12 13 14 15

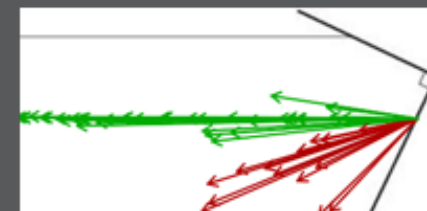
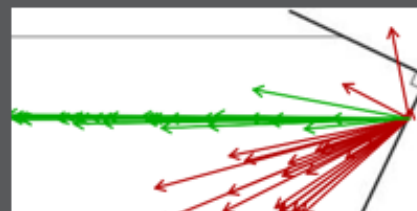


perpendicular mirrors as shown below.

[Deliver](#) [Show all results](#)

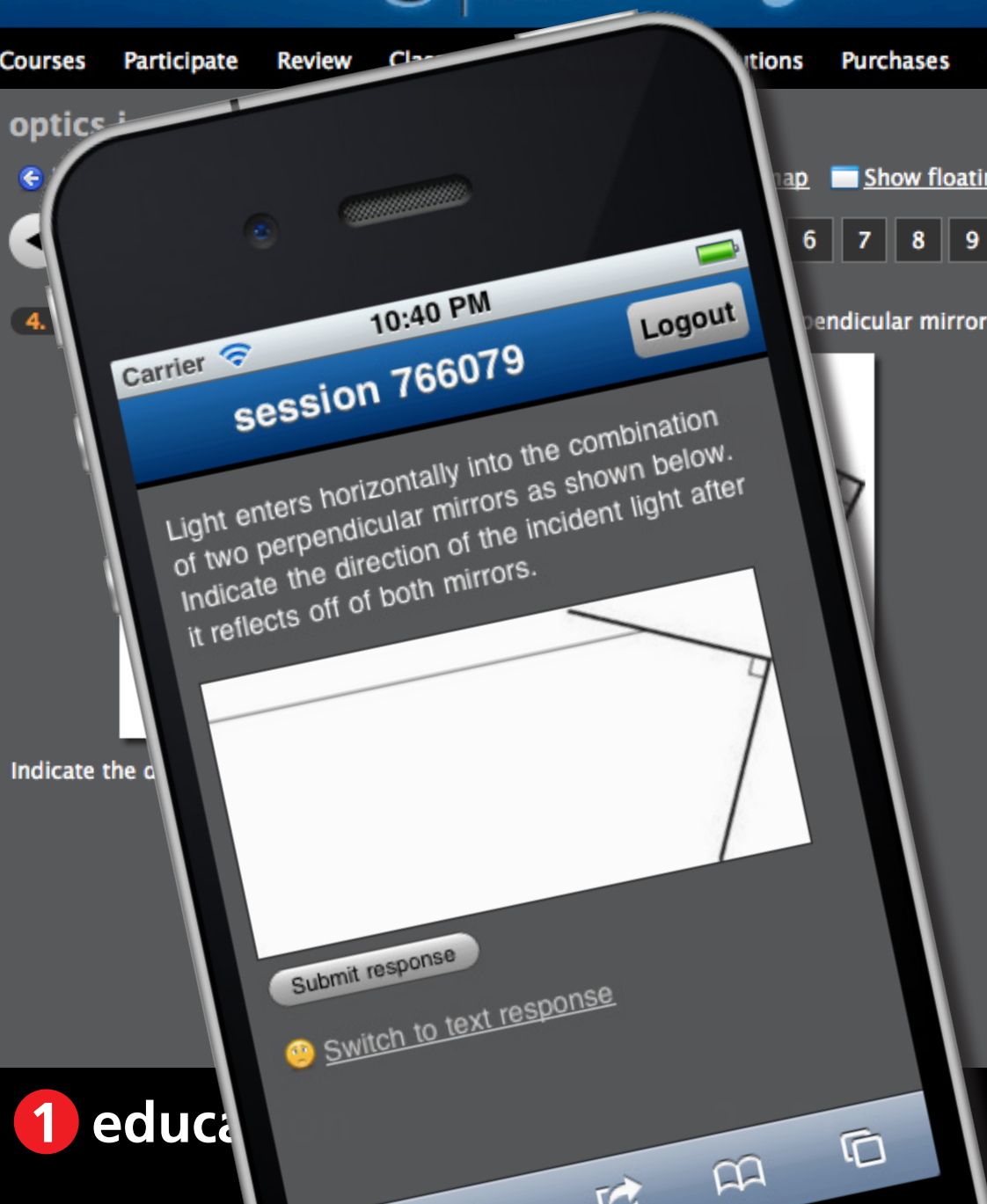
Round 1 [✖](#) [📊](#) [📄](#)
● 57 responses, 58% correct

Round 2 [✖](#) [📊](#) [📄](#)
● 51 responses, 73% correct



✓ 8 get it now
✗ 0 still don't get it

[📣 feedback & support](#)



Sample question types:

- direction
- expression
- long answer, short answer, word cloud (fill in text)
- multiple-choice, many-choice
- numerical (enter a number)
- ranking
- region (select point on image)
- sketch
- highlight passage

learning | catalytics

[Courses](#) [Participate](#) [Review](#) [Classrooms](#) [Account](#) [Institutions](#) [Purchases](#) [Users](#) [Tour](#) [Help](#)

arlington school district

current session: **48222** | 24 students

[← Back to all lectures](#) [■ Stop session](#) [📊 Review results](#) [📄 Show floating session ID](#) [⚙ Edit](#) [✖ Delete](#)



Jump to ▾ **1** 2 3 4 **5**



5. region Where is Tanzania?

[✖ Stop delivery](#) [🔄 Deliver again](#) [👥 Assign groups](#) [📊 Show all results](#)



[feedback & support](#)

1 education

2 PI

3 PI 2.0

learning | catalytics

[Courses](#) [Participate](#) [Review](#) [Classrooms](#) [Account](#) [Institutions](#) [Purchases](#) [Users](#) [Tour](#) [Help](#)

arlington school district

current session: **48222** | 24 students

[← Back to all lectures](#) [Stop session](#) [Review results](#) [Show floating session ID](#) [Edit](#) [Delete](#)



Jump to ▾ **1** 2 3 4 **5**

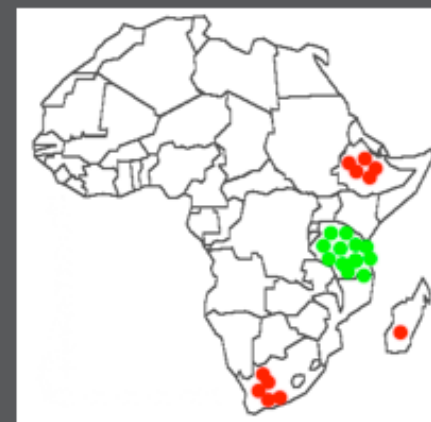


5. region Where is Tanzania?

[Stop delivery](#) [Deliver again](#) [Assign groups](#) [Show all results](#)



Round 1 [✕](#) [📊](#)
● 24 responses, 75% correct



[🗣️ feedback & support](#)

1 education

2 PI

3 PI 2.0

Sample question types:

- direction

- expression

- long answer, short answer, word cloud (fill in text)

- multiple-choice, many-choice

- numerical (enter a number)

- ranking

- region (select point on image)

- sketch

- highlight passage

learning | catalytics

[Courses](#) [Participate](#) [Review](#) [Classrooms](#) [Account](#) [Institutions](#) [Purchases](#) [Users](#) [Tour](#) [Help](#)

arlington school district

current session: **123456** | 31 students

[Back to all lectures](#) [Stop session](#) [Review results](#) [Show floating session ID](#) [Edit](#) [Delete](#)



Jump to ▾

1

2

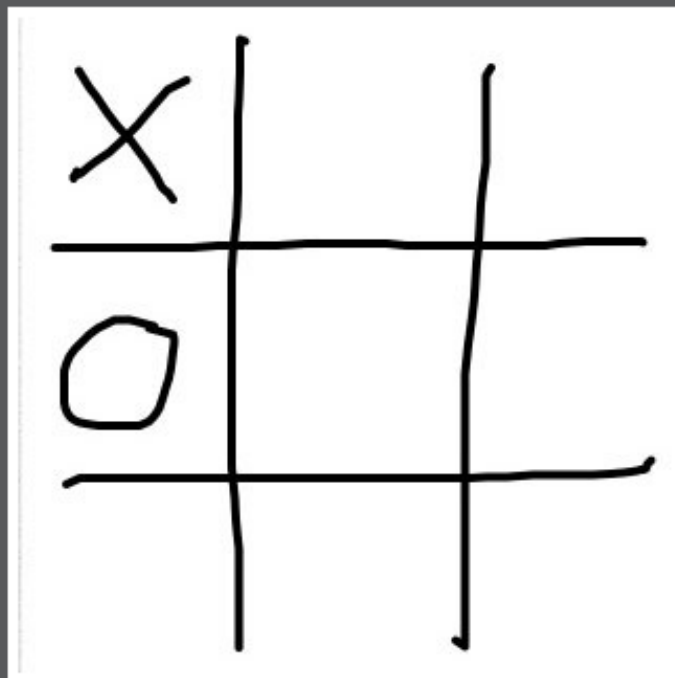
3

4



4. region It's X's turn -- what's the best next move?

[Stop delivery](#) [Deliver again](#) [Assign groups](#) [Show all results](#)



feedback & support

1 education

2 PI

3 PI 2.0

learning | catalytics

[Courses](#) [Participate](#) [Review](#) [Classrooms](#) [Account](#) [Institutions](#) [Purchases](#) [Users](#) [Tour](#) [Help](#)

arlington school district

current session: **123456** | 31 students

[Back to all lectures](#) [Stop session](#) [Review results](#) [Show floating session ID](#) [Edit](#) [Delete](#)

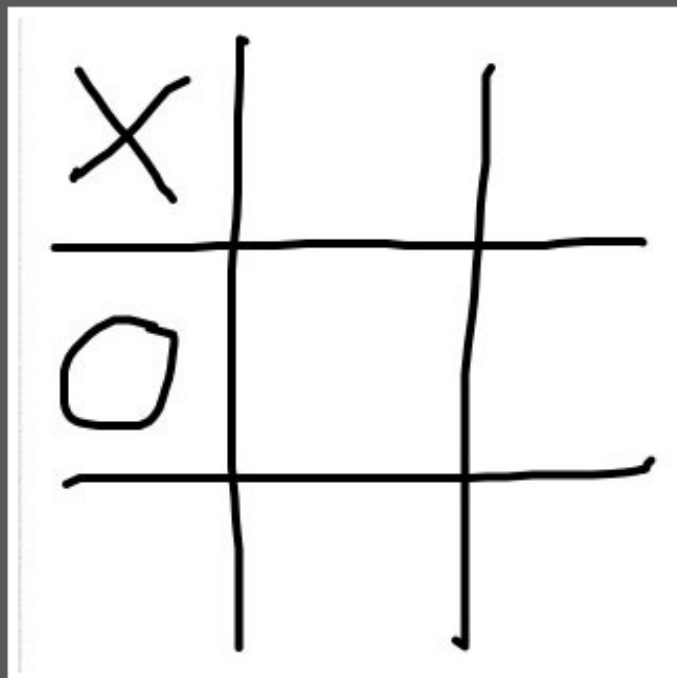


Jump to 1 2 3 4

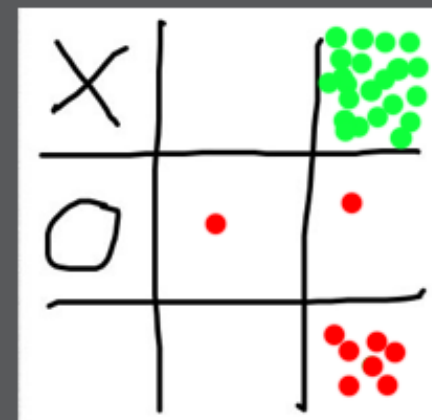


4. region It's X's turn -- what's the best next move?

[Stop delivery](#) [Deliver again](#) [Assign groups](#) [Show all results](#)



Round 1 [X](#) [Bar Chart](#)
31 responses, 71% correct



[feedback & support](#)

1 education

2 PI

3 PI 2.0

Sample question types:

- direction

- expression

- long answer, short answer, word cloud (fill in text)

- multiple-choice, many-choice

- numerical (enter a number)

- ranking

- region (select point on image)

- sketch

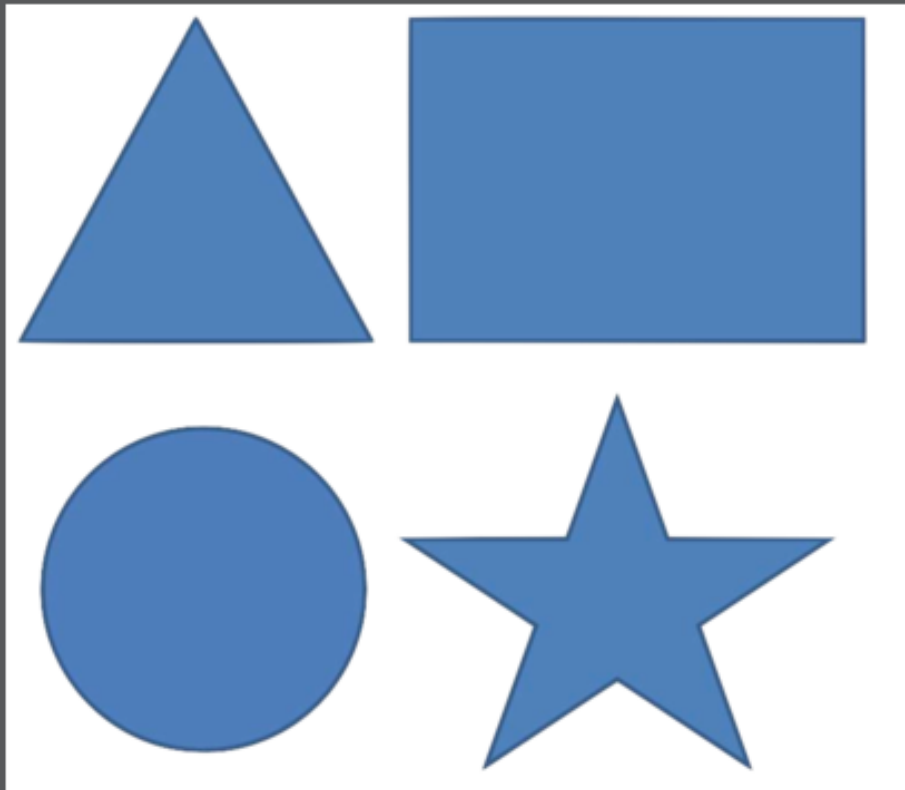
- highlight passage

learning | catalytics

[Courses](#) [Participate](#) [Review](#) [Classrooms](#) [Account](#) [Institutions](#) [Purchases](#) [Users](#) [Tour](#) [Help](#)

5. region **circle**

 [Stop delivery](#)  [Deliver again](#)  [Assign groups](#)  [Show all results](#)



1 education

2 PI

3 PI 2.0

learning | catalytics

[Courses](#) [Participate](#) [Review](#) [Classroom](#) [Institutions](#) [Purchases](#) [Users](#) [Tour](#) [Help](#)

5. region

[Stop delivery](#) [Deliver again](#) [Assign groups](#) [Show all results](#)



1 educa

3 PI 2.0

learning | catalytics

[Courses](#) [Participate](#) [Review](#) [Classroom](#) [Institutions](#) [Purchases](#) [Users](#) [Tour](#) [Help](#)

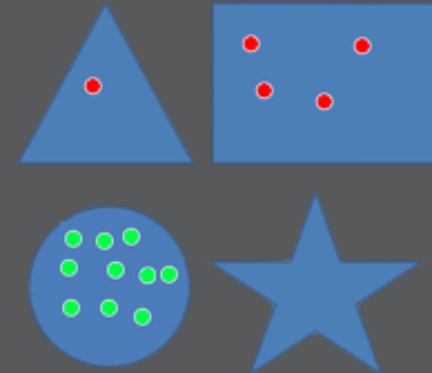
5. region

[Stop delivery](#) [Deliver again](#) [Assign groups](#) [Show all results](#)



Round 1

15 responses, 67% correct



Sample question types:

- direction

- expression

- long answer, short answer, word cloud (fill in text)

- multiple-choice, many-choice

- numerical (enter a number)

- ranking

- region (select point on image)

- sketch

- highlight passage

learning | catalytics

[Courses](#) [Participate](#) [Review](#) [Classrooms](#) [Account](#) [Institutions](#) [Purchases](#) [Users](#) [Tour](#) [Help](#)

arlington school district

current session: **48222** | 28 students

[← Back to all lectures](#) [Stop session](#) [Review results](#) [Show floating session ID](#) [Edit](#) [Delete](#)



Jump to ▾

1

2

3

4

5

6



6. numerical 7 + 13 = ?

[Stop delivery](#) [Deliver again](#) [Assign groups](#) [Show all results](#)

© 2011 Learning Catalytics LLC | [Contact us](#)



feedback & support

1 education

2 PI

3 PI 2.0

learning | catalytics

[Courses](#) [Participate](#) [Review](#) [Classrooms](#) [Account](#) [Institutions](#) [Tours](#) [Tour](#) [Help](#)

arlington school district

current session: **48222** | 28 students

[Back to all lectures](#) [Stop session](#)

[Delete](#)



6. numerical 7 + 13 = ?

6

[Deliver again](#) [Assign groups](#) [Show all results](#)



Carrier 6:37 PM session 48222 Logout

7 + 13 = ?
 Submit response



[feedback & support](#)

learning | catalytics

[Courses](#) [Participate](#) [Review](#) [Classrooms](#) [Account](#) [Institutions](#) [Tours](#) [Help](#)

arlington school district

current session: **48222** | 28 students

[Back to all lectures](#) [Stop session](#)

[Delete](#)



6. numerical 7 + 13 = ?

[Deliver again](#) [Assign groups](#) [Show all results](#)



Carrier 6:37 PM session 48222 Logout

7 + 13 = ?

20

Submit response

Done

Previous

Next

AutoFill



Round 1

28 responses, 50% correct

6: 7%

13: 29%

20: 50%

21: 14%



feedback & support

Sample question types:

- direction
- expression
- long answer, short answer, word cloud (fill in text)
- multiple-choice, many-choice
- numerical (enter a number)
- ranking
- region (select point on image)
- sketch
- highlight passage

learning | catalytics

[Courses](#) [Participate](#) [Review](#) [Classrooms](#) [Account](#) [Institutions](#) [Purchases](#) [Users](#) [Tour](#) [Help](#)

transformations of parabolas

current session: **773885** | 9 students

[← Back to all lectures](#) [■ Stop session](#) [📊 Review results](#) [📄 Show floating session ID](#) [⚙ Edit](#) [📄 PDF](#) [✖ Delete](#)



Jump to ▾

1

2

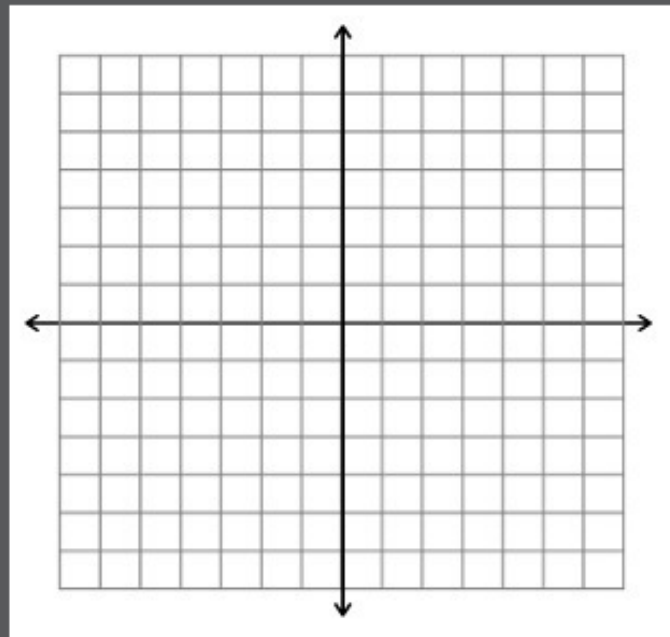
3

4



4. sketch Sketch a graph of the function $f(x) = (x - 3)^2 + 2$.

[✖ Stop delivery](#) [🔄 Deliver again](#) [👥 Assign groups](#) [📊 Show all results](#)



1 education

2 PI

3 PI 2.0

learning | catalytics

[Courses](#) [Participate](#) [Review](#) [Classrooms](#) [Account](#) [Institutions](#) [Purchases](#) [Users](#) [Tour](#) [Help](#)

transformations of parabolas

current session: **773885** | 9 students

[Back to all lectures](#) [Stop session](#) [Review results](#) [Show floating session ID](#) [Edit](#) [PDF](#) [Delete](#)



Jump to ▾

1

2

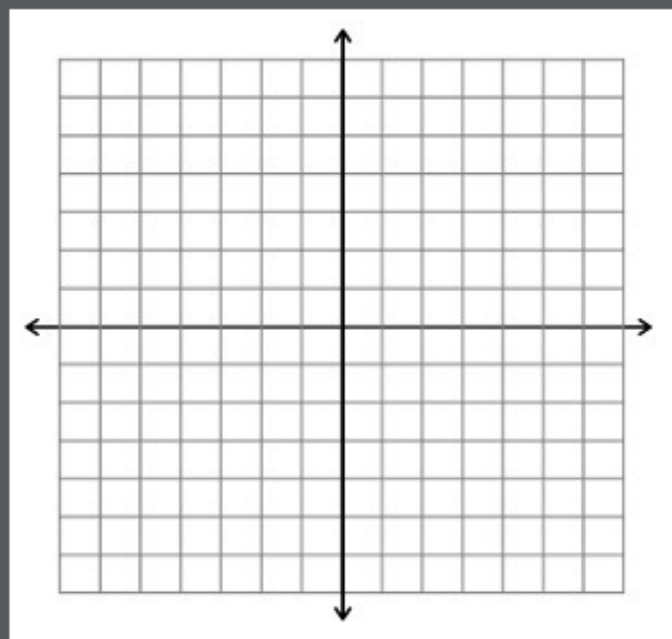
3

4



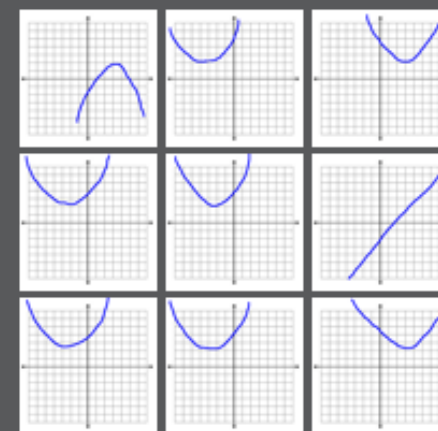
4. sketch Sketch a graph of the function $f(x) = (x - 3)^2 + 2$.

[Stop delivery](#) [Deliver again](#) [Assign groups](#) [Show all results](#)



Round 1

9 responses



1 education

2 PI

3 PI 2.0

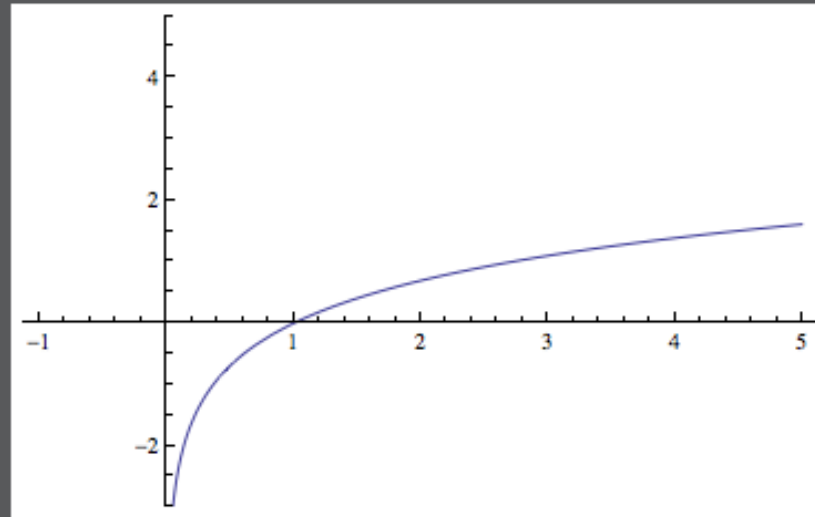
Sample question types:

- direction
- expression
- long answer, short answer, word cloud (fill in text)
- multiple-choice, many-choice
- numerical (enter a number)
- ranking
- region (select point on image)
- sketch
- highlight passage

learning | catalytics

[Courses](#) [Participate](#) [Review](#) [Classrooms](#) [Account](#) [Institutions](#) [Purchases](#) [Users](#) [Tour](#) [Help](#)

This is a graph of $f(x) = \ln x$. Sketch a graph of the derivative $f'(x)$.



1 education

2 PI

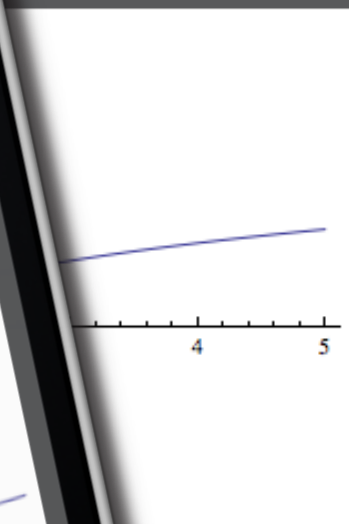
3 PI 2.0

learning | catalytics

Courses Participate

ases Users Tour Help

This is a graph of $f(x) =$



1 education

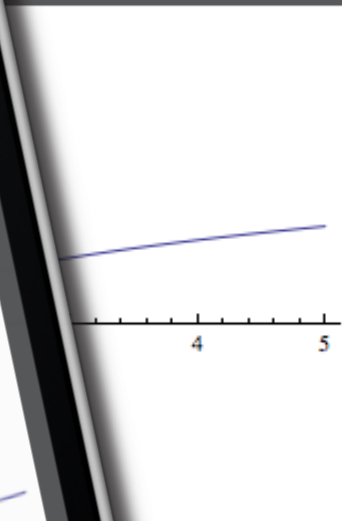
3 PI 2.0

learning | catalytics

Courses Participate

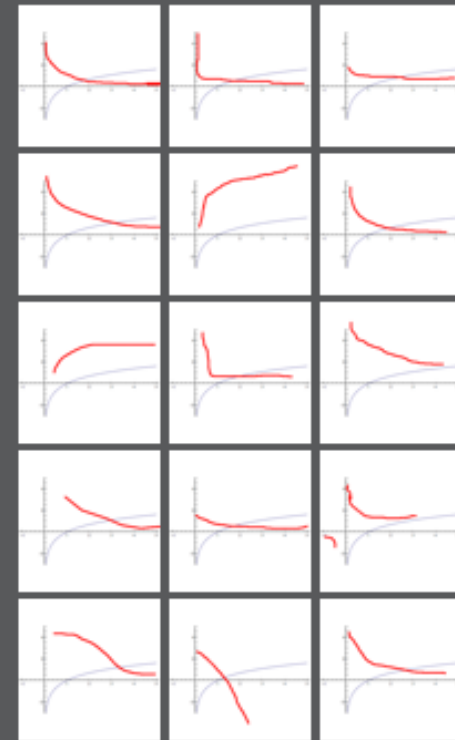
ases Users Tour Help

This is a graph of $f(x) =$



Round 1

15 responses



✓ 6 get it now
 ✗ 0 still don't get it

1 education

3 PI 2.0

Sample question types:

- direction
- expression
- long answer, short answer, word cloud (fill in text)
- multiple-choice, many-choice
- numerical (enter a number)
- ranking
- region (select point on image)
- sketch
- highlight passage

learning | catalytics

[Courses](#) [Participate](#) [Review](#) [Classrooms](#) [Account](#) [Institutions](#) [Purchases](#) [Users](#) [Tour](#) [Help](#)

1. highlighting What do you see as the most important part of this Shakespeare sonnet? [Stop delivery](#) [Deliver again](#) [Assign groups](#) [Show all results](#)

For shame! deny that thou bear'st love to any,
Who for thyself art so unprovident.
Grant, if thou wilt, thou art beloved of many,
But that thou none lovest is most evident;
For thou art so possess'd with murderous hate
That 'gainst thyself thou stick'st not to conspire.
Seeking that beauteous roof to ruinate
Which to repair should be thy chief desire.
O, change thy thought, that I may change my mind!
Shall hate be fairer lodged than gentle love?
Be, as thy presence is, gracious and kind,
Or to thyself at least kind-hearted prove:
Make thee another self, for love of me,
That beauty still may live in thine or thee.

1 education

2 PI

3 PI 2.0

learning | catalytics

[Courses](#) [Participate](#) [Review](#) [Classroom](#) [Institutions](#) [Purchases](#) [Users](#) [Tour](#) [Help](#)

1. highlighting
sonnet?

this Shakespeare

[Stop delivery](#)

[Deliver again](#)

[Assign groups](#)

[Show all results](#)



For shame
Who for t
Grant, if t
But that th
For thou a
That 'gainst
Seeking that
Which to rep
O, change th
Shall hate be
Be, as thy pres
Or to thyself a
Make thee ano
That beauty stil

What do you see as the most important part of this Shakespeare sonnet?

Highlight the passage below by clicking or tapping once to set the beginning of your highlight, and then clicking or tapping again to set the end.

For shame! deny that thou bear'st love to any,
Who for thyself art so unprovident.
Grant, if thou wilt, thou art beloved of many,
But that thou none lovest is most evident;
For thou art so possess'd with murderous hate
That 'gainst thyself thou stick'st not to
conspire.

Seeking that beauteous roof to ruinate
Which to repair should be thy chief desire.
O, change thy thought, that I may change my
mind!

1 educa

3 PI 2.0

learning | catalytics

[Courses](#) [Participate](#) [Review](#) [Classroom](#) [Institutions](#) [Purchases](#) [Users](#) [Tour](#) [Help](#)

1. highlighting
sonnet?

[his Shakespeare](#) [Stop delivery](#) [Deliver again](#) [Assign groups](#) [Show all results](#)



Round 1

3 responses

For shame! deny that thou bear'st
love to any,
Who for thyself art so
unprovident.
Grant, if thou wilt, thou art
beloved of many,
But that thou none lovest is most
evident;
For thou art so possess'd with
murderous hate
That 'gainst thyself thou stick'st
not to conspire.
Seeking that beauteous roof to
ruinate
Which to repair should be thy
chief desire.
O, change thy thought, that I may
change my mind!
Shall hate be fairer lodged than
gentle love?
Be, as thy presence is, gracious
and kind,

1 educa

3 PI 2.0

Sample question types:

- direction
- expression
- long answer, short answer, word cloud (fill in text)
- multiple choice, many choice
- numerical (enter a number)
- ranking
- region (select point on image)
- sketch
- highlight passage



1 lecture

2 PI

3 PI 2.0



human interaction

1 lecture

2 PI

3 PI 2.0

Carrier 9:31 PM 100%

learning catalytics

skywalker.seas.harvard.edu/class_sessions/399757/review_results

Eric Mazur | Harvard University | Log out

Participate Review Classrooms Account Institutions Users About

learning | catalytics

review results for session 399757 in electrostatic work and energy ii

Back to all lectures Download all results

Jump to 1 2 3 4 5 6 7 8 9 10 11 12 13 14 15 16 17 18 19

Round 1 74 responses, 61% correct

Round 2 75 responses, 83% correct

A. 61% B. 4% C. 35% D. 0% E. 0%

A. 83% B. 0% C. 17% D. 0% E. 0%

A positively charged rod is held near a neutral conducting sphere as illustrated below. A positively charged particle is moved from point A to point B



A. positive
B. zero
C. negative
D. depends on the path taken from A to B
E. cannot be determined without knowing more about the polarization induced in the sphere

Search:

1 lecture

2 PI

3 PI 2.0

Carrier 9:31 PM learning catalytics skywalker.seas.harvard.edu/class_sessions/399757/review_results Google Eric Mazur | Harvard University | Log out

learning catalytics

A positively charged rod is held near a neutral conducting sphere as illustrated below. A positively charged particle is moved from point A to point B as illustrated below. The potential difference from A to B is

A. positive
 B. zero
 C. negative
 D. depends on the path taken from A to B
 E. cannot be determined without knowing more about the polarization induced in the sphere

Round 1
 74 responses, 61% correct

A. 61%
B. 4%
C. 35%
D. 0%
E. 0%

Round 2
 75 responses, 83% correct

A. 83%
B. 0%
C. 17%
D. 0%
E. 0%

Search: _____

1 lecture

2 PI

3 PI 2.0

Carrier 9:31 PM 100%

learning catalytics

skywalker.seas.harvard.edu/class_sessions/399757/review_results

Eric Mazur | Harvard University | Log out

Participate Review Classrooms Account Institutions Users About

review results for session 399757 in electrostatic work and energy ii

Back to all lectures Download all results

Jump to 1 2 3 4 5 6 7 8 9 10 11 12 13 14 15 16 17 18 19

A positively charged rod is held near a neutral conducting sphere as illustrated below. A positively charged particle is moved from point A to point B

Round 1 74 responses, 61% correct

A. 61%
B. 4%
C. 35%
D. 0%
E. 0%

Round 2 75 responses, 83% correct

A. 83%
B. 0%
C. 17%
D. 0%
E. 0%

A. positive
B. zero
C. negative
D. depends on the path taken from A to B
E. cannot be determined without knowing more about the polarization induced in the sphere

Search:

1 lecture

2 PI

3 PI 2.0

Carrier 9:31 PM learning catalytics skywalker.seas.harvard.edu/class_sessions/399757/review_results Google Eric Mazur | Harvard University | Log out

learning catalytics





A positively charged rod is held near a neutral conducting sphere as illustrated below. A positively charged particle is moved from point A to point B as illustrated below.



A. positive
 B. zero
 C. negative
 D. depends on the path taken from A to B
 E. cannot be determined without knowing more about the polarization induced in the sphere

Round 1
 74 responses, 61% correct

A. 61%
 B. 4%
 C. 35%
 D. 0%
 E. 0%

Round 2
 75 responses, 83% correct

A. 83%
 B. 0%
 C. 17%
 D. 0%
 E. 0%

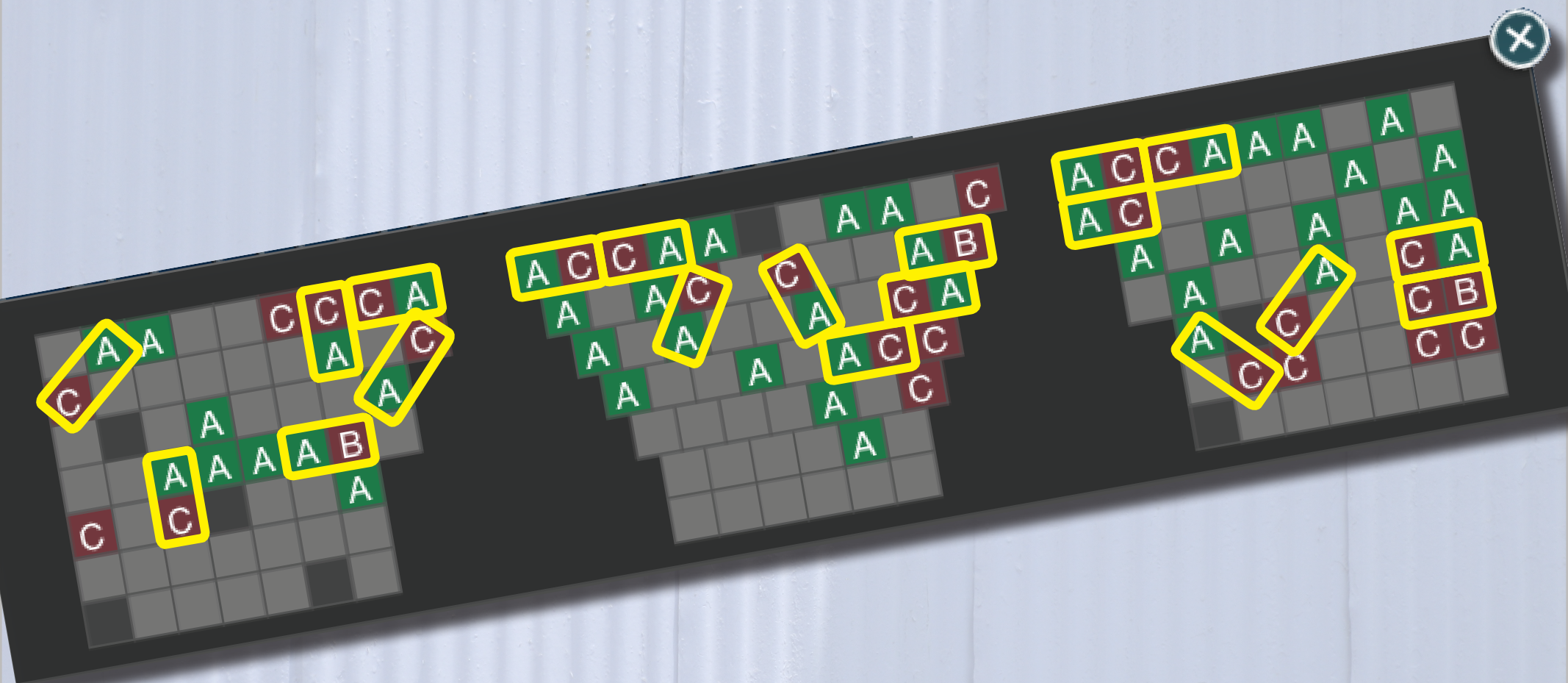
Search: _____

1 lecture

2 PI

3 PI 2.0

let system manage pairing



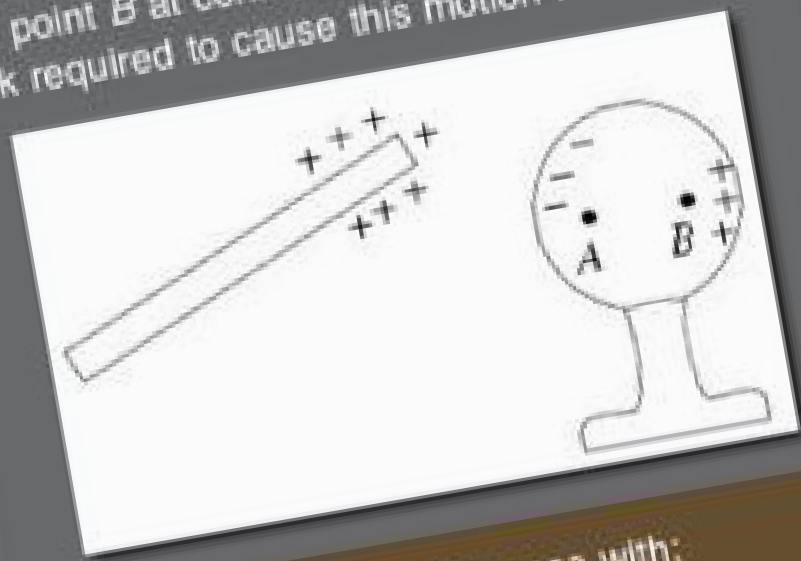
1 lecture

2 PI

3 PI 2.0

Leave

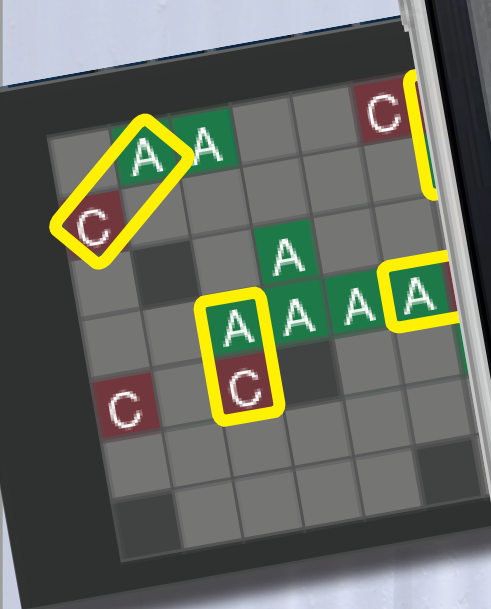
A positively charged rod is held near a neutral conducting sphere as illustrated below. A positively charged particle is moved from point A to point B at constant speed. The mechanical work required to cause this motion is



Please discuss your response with:

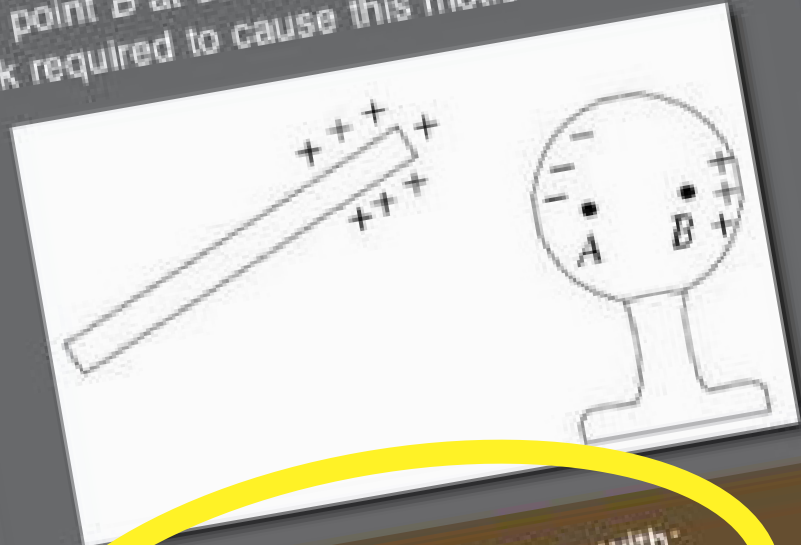
- Brian Lukoff (to your left)

I am talking to this person/people



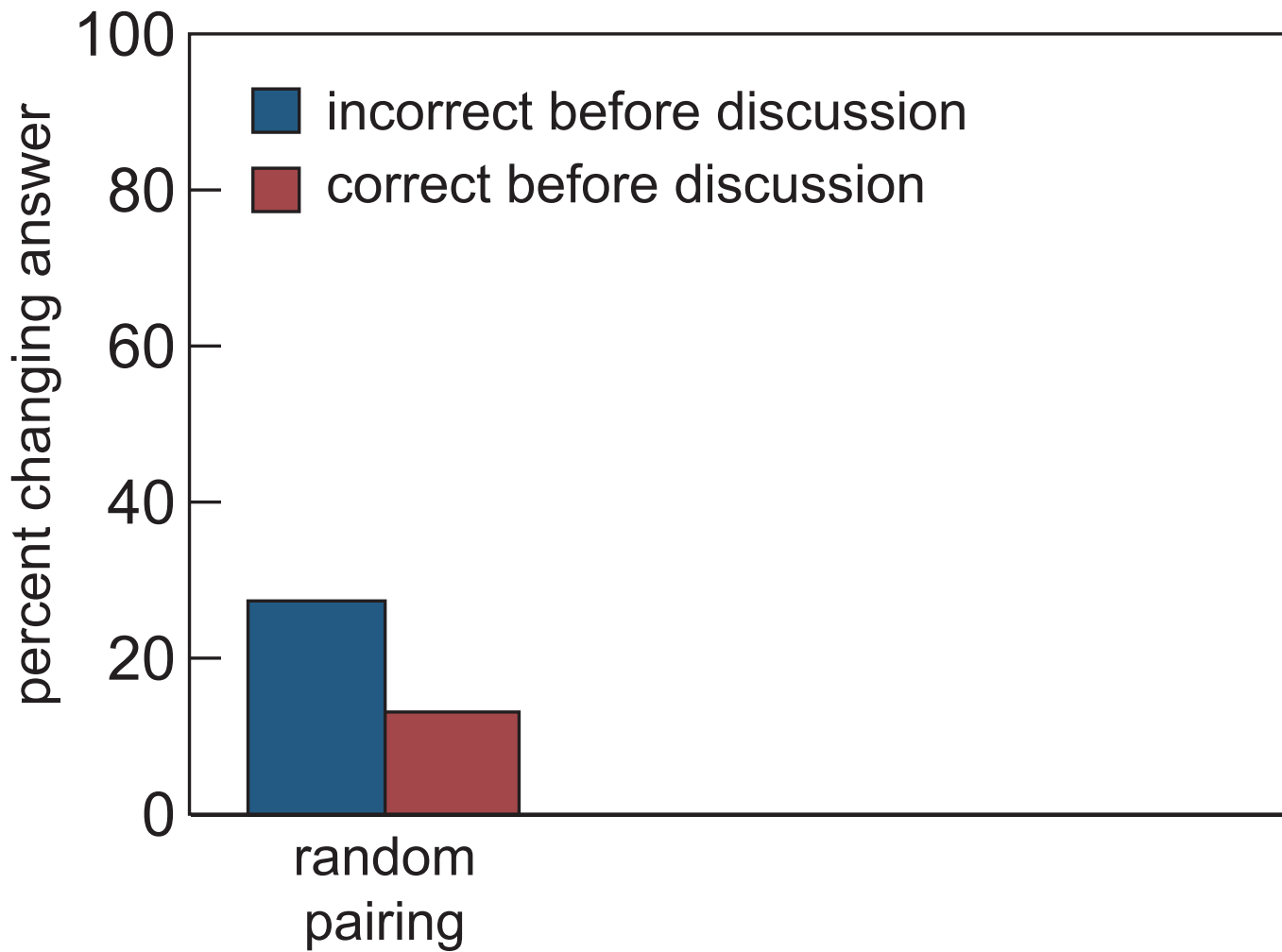
Leave

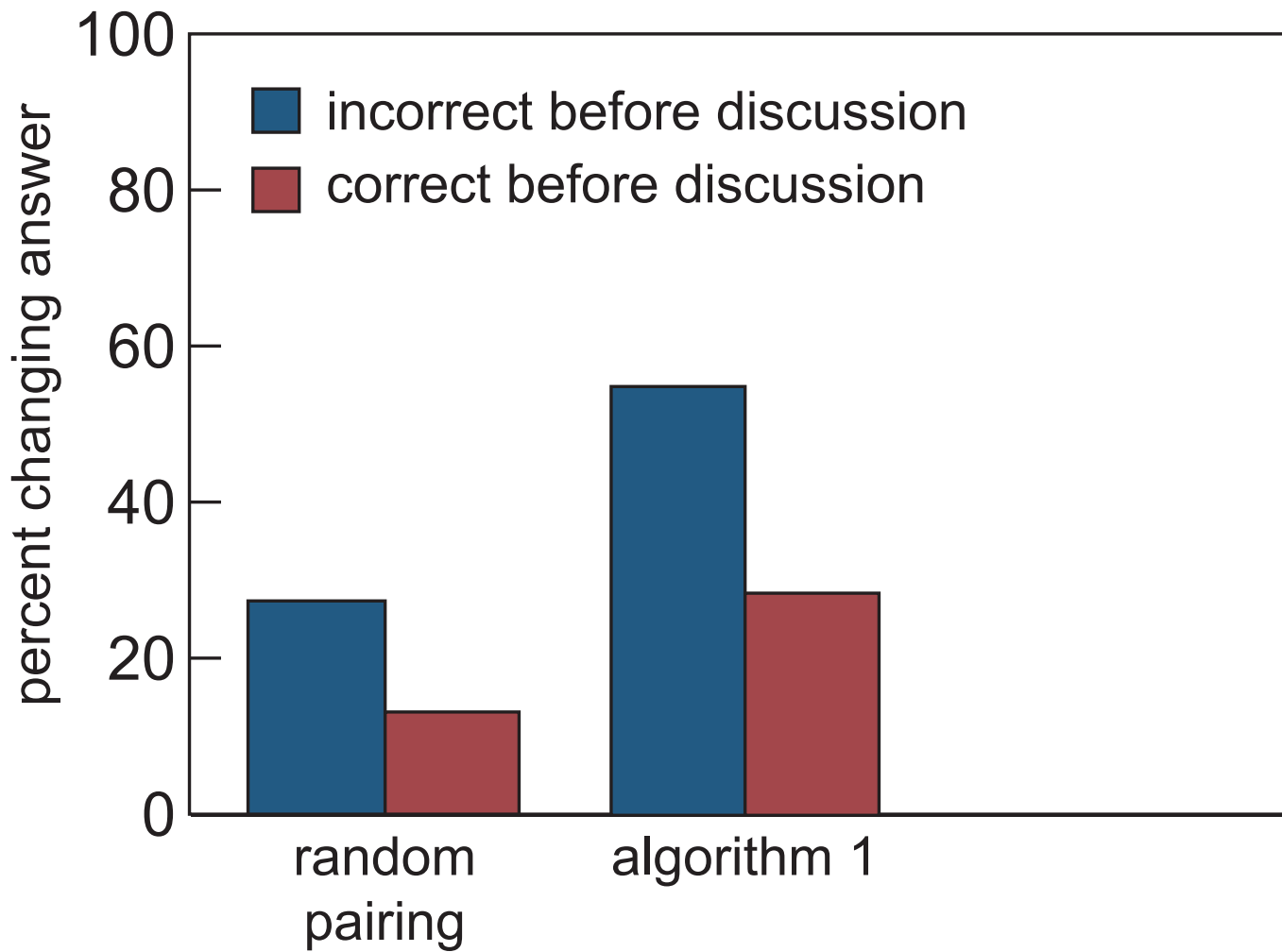
A positively charged rod is held near a neutral conducting sphere as illustrated below. A positively charged particle is moved from point A to point B at constant speed. The mechanical work required to cause this motion is

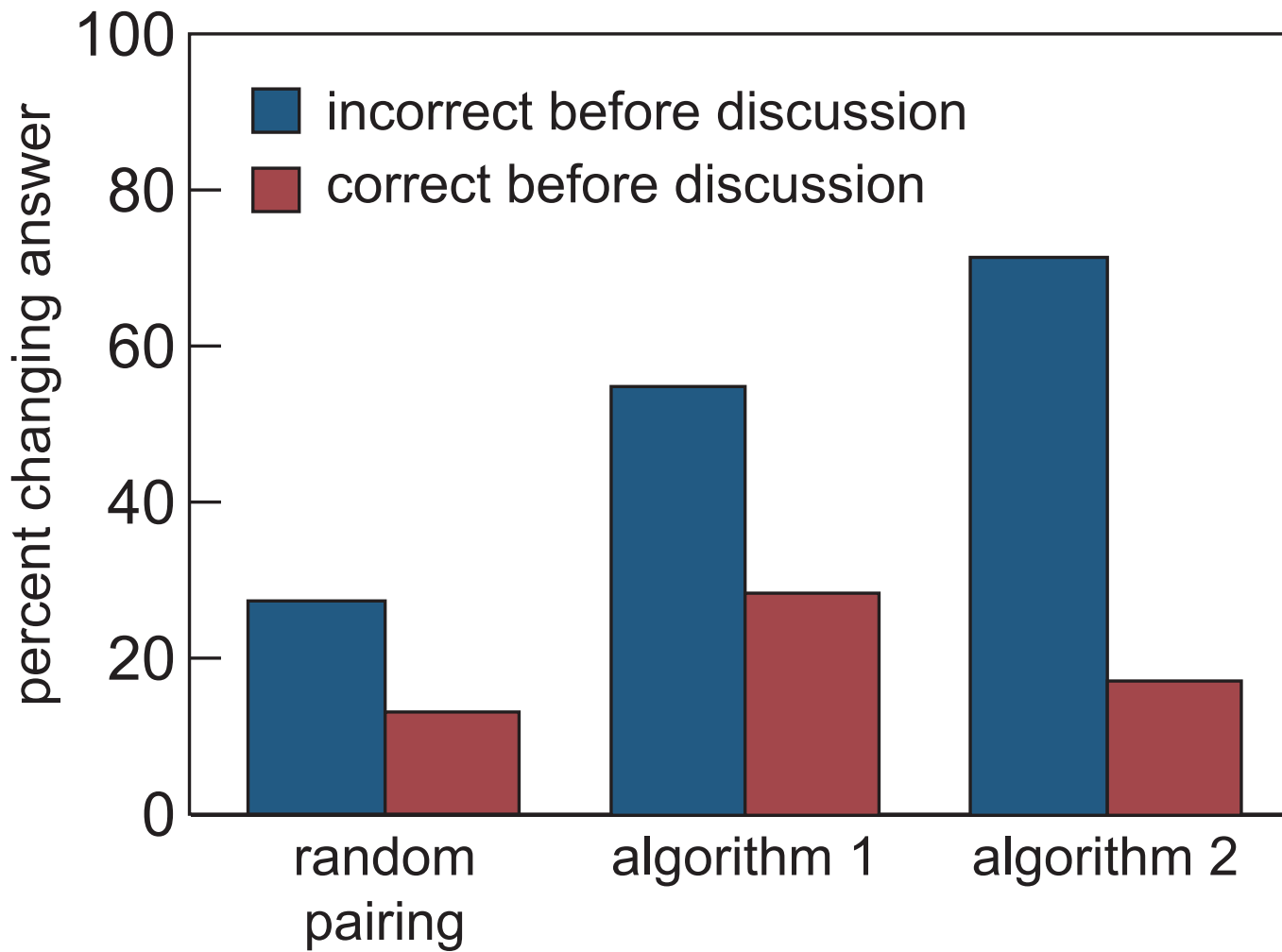


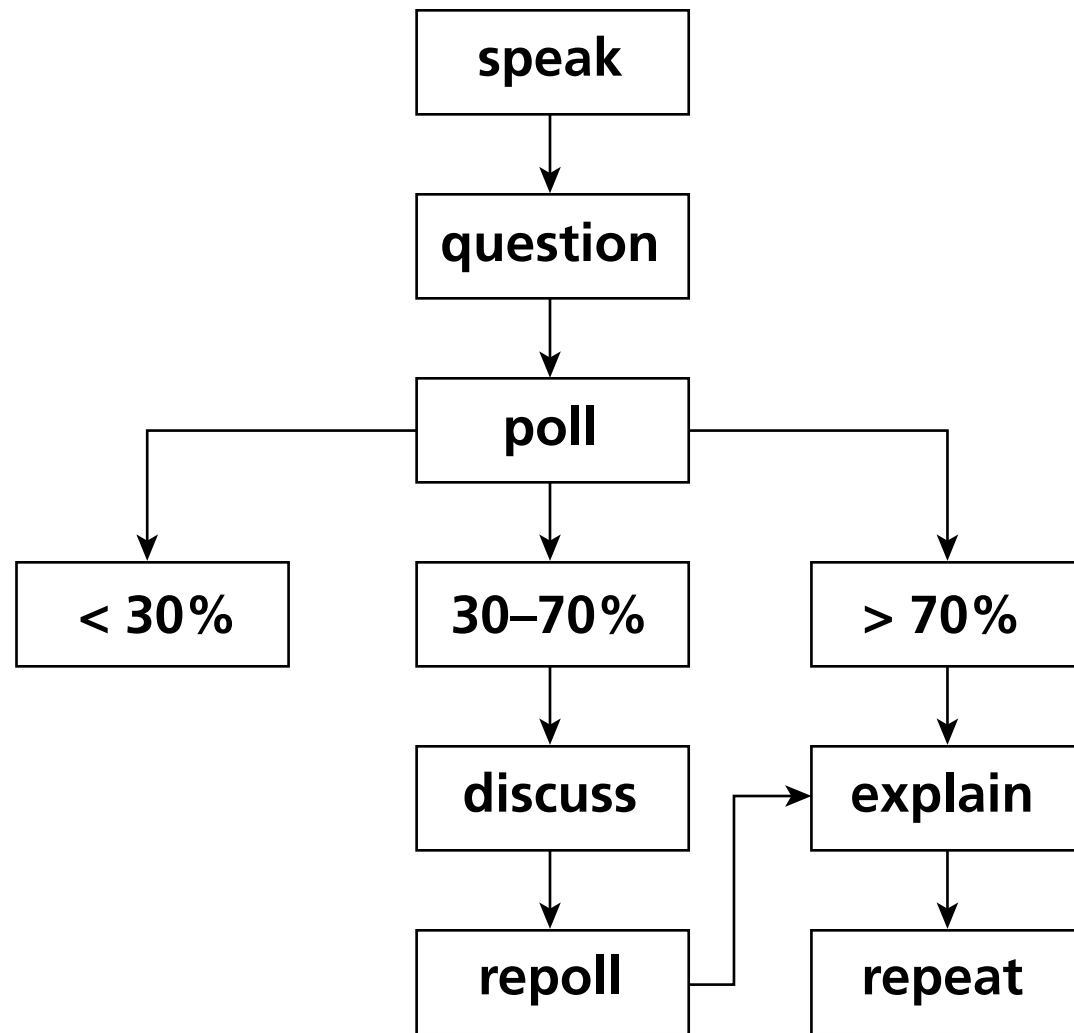
Please discuss your response with:

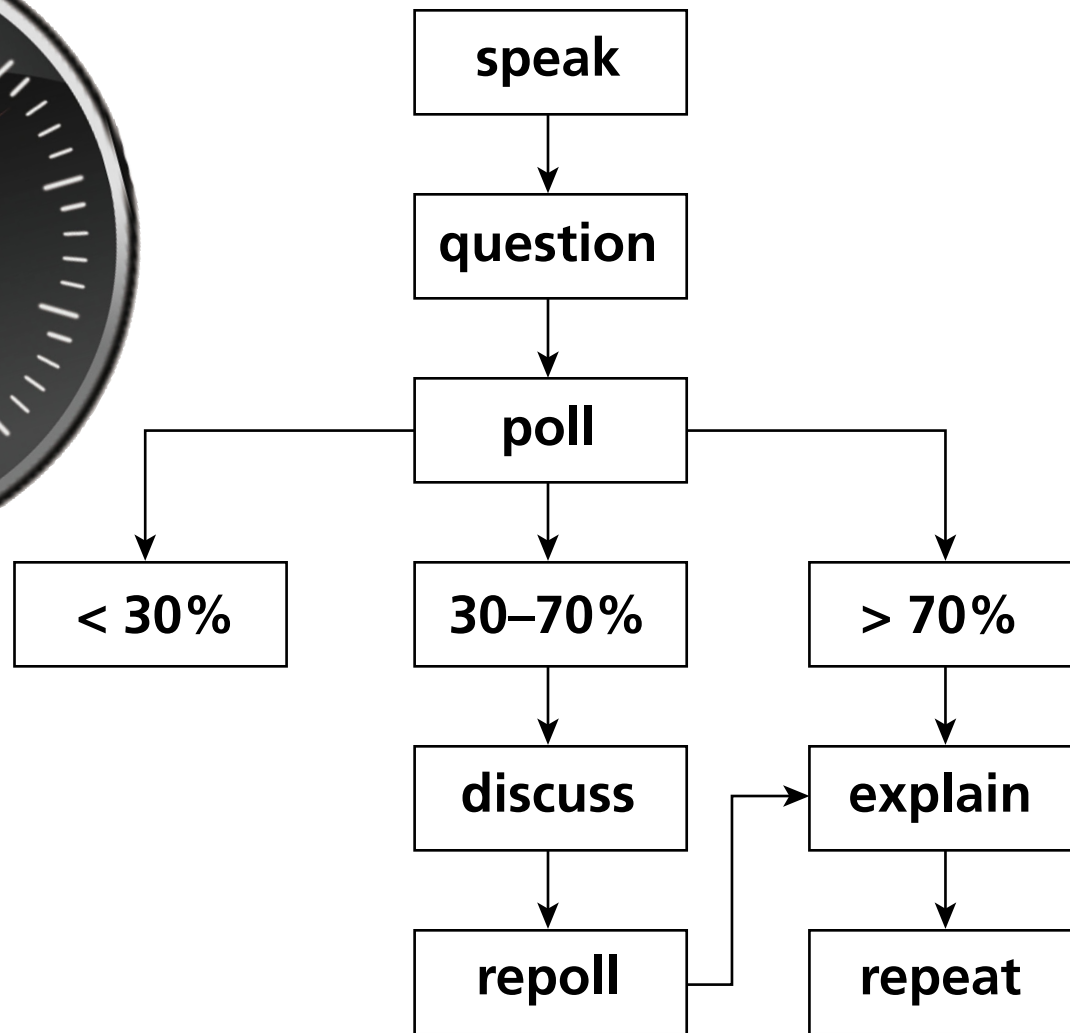
- Brian Lukoff (to your left)













1 education

2 PI

3 PI 2.0



the future is here!

1 education

2 PI

3 PI 2.0

The background of the slide features a close-up of a person's face, specifically their eyes and nose, viewed through horizontal window blinds. The blinds are partially open, creating a grid-like pattern over the face. The lighting is soft, and the colors are muted, with a focus on the blue and grey tones of the person's skin and the yellowish-brown of the blinds.

Education is not just about:

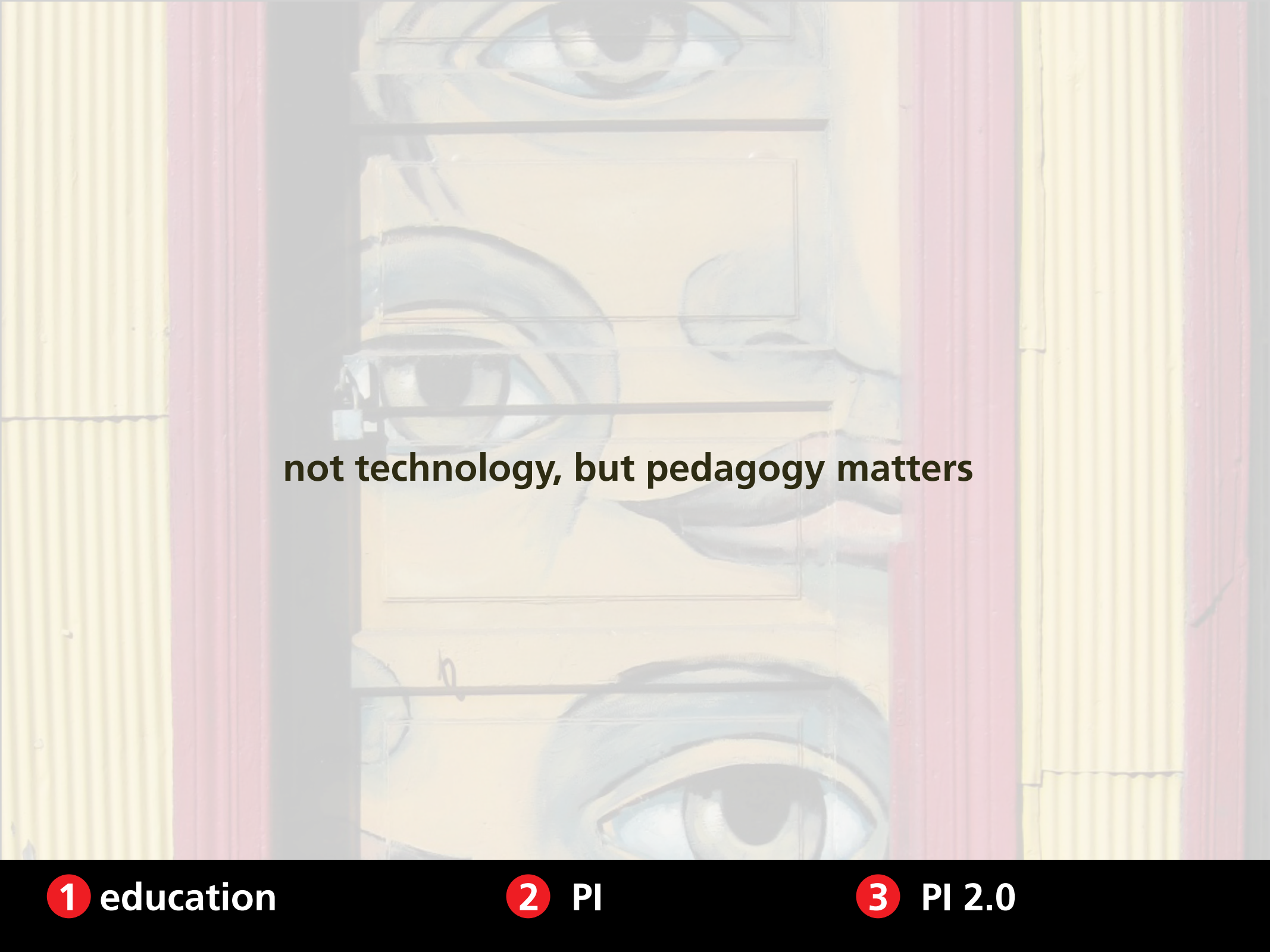
- **transferring information**
- **getting students to do what we do**



Education is not just about:

- **transferring information**
- **getting students to do what we do**

discovery & exploration a must!



not technology, but pedagogy matters

1 education

2 PI

3 PI 2.0

Funding:

National Science Foundation

for a copy of this presentation:

mazur.harvard.edu

learningcatalytics.com

Follow me!



[eric_mazur](https://twitter.com/eric_mazur)