

Promoting ownership of learning with authentic assessment



ISD Allen/November Learning Webinar
Cambridge, MA, 2 October 2012



Promoting ownership of learning with authentic assessment



@eric_mazur

ISD Allen/November Learning Webinar
Cambridge, MA, 2 October 2012



kosten

1. die Kosten (*pl.*)
2. kostbar

455

krank

1. die Krankheit, —, —en

COW

377

magnificent
glor

1. magnifice
2. master

430

das Kind, —(e)s, —er

1. kindisch
2. kindlich

der Kellner, —s, —

1. der Keller, —s, —

kennen

kannte-gekantt *irreg.*

1. kennen-lernen
2. erkennen
3. bekannt
4. der Bekannte (*adj.* as *n.*)

07

outh

verba

vet!

kosten

1. die Kosten (*pl.*)
2. kostbar

krank

die Krankheit, —, —en

kennen

1. kannte-gekant
2. erkennen
3. bekannt
4. der Bekannte (*adj.*, as n.)



**35% retained
after 1 week**



**we only guarantee
they'll pass the test**



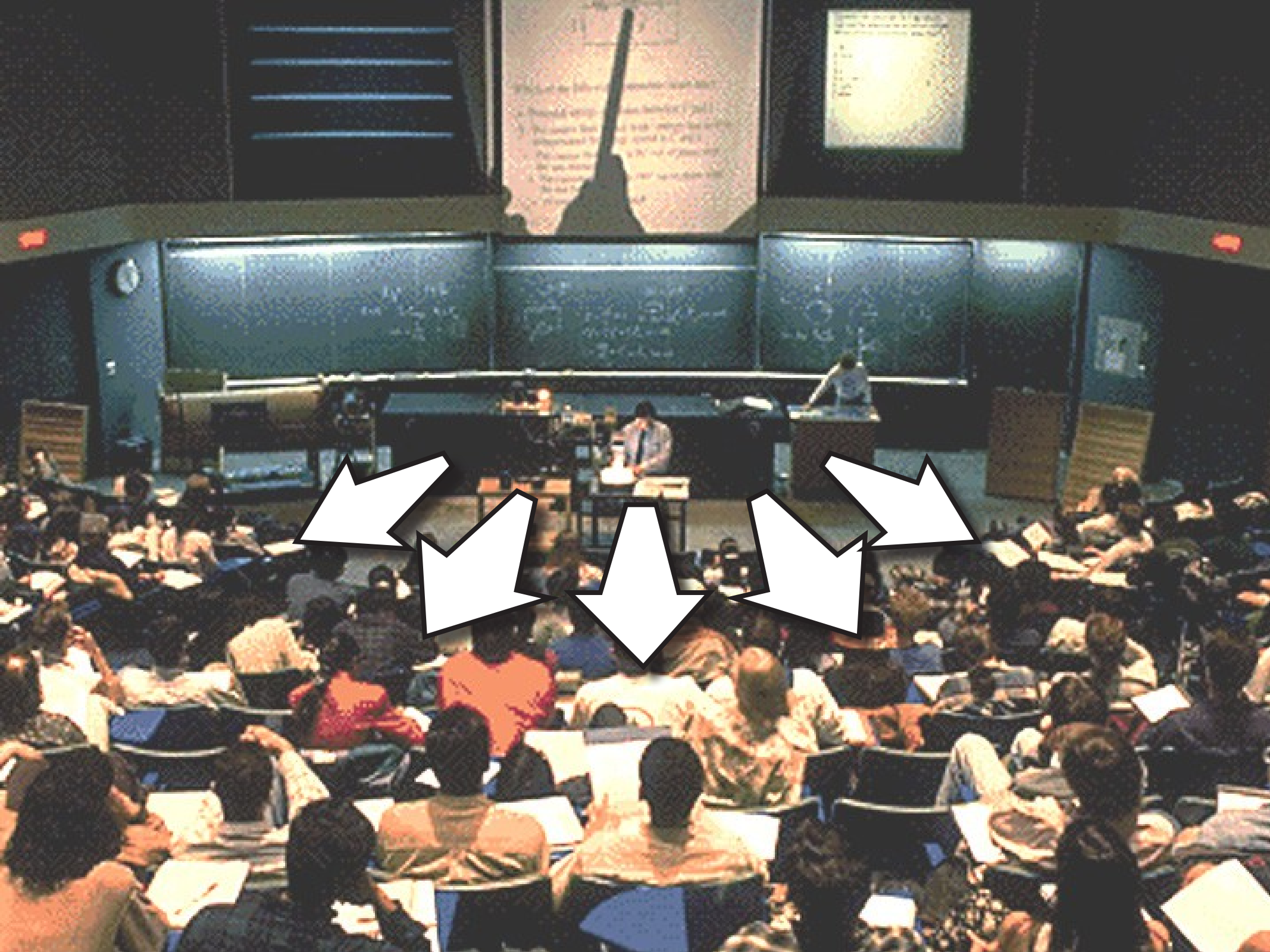


5-minute university



What are the factors that determine the rate of a chemical reaction?
1. Physical properties of the reactants
2. The concentration of the reactants
3. The temperature of the system
4. The presence of a catalyst
5. The surface area of the reactants

NAME: _____
DATE: _____
SECTION: _____



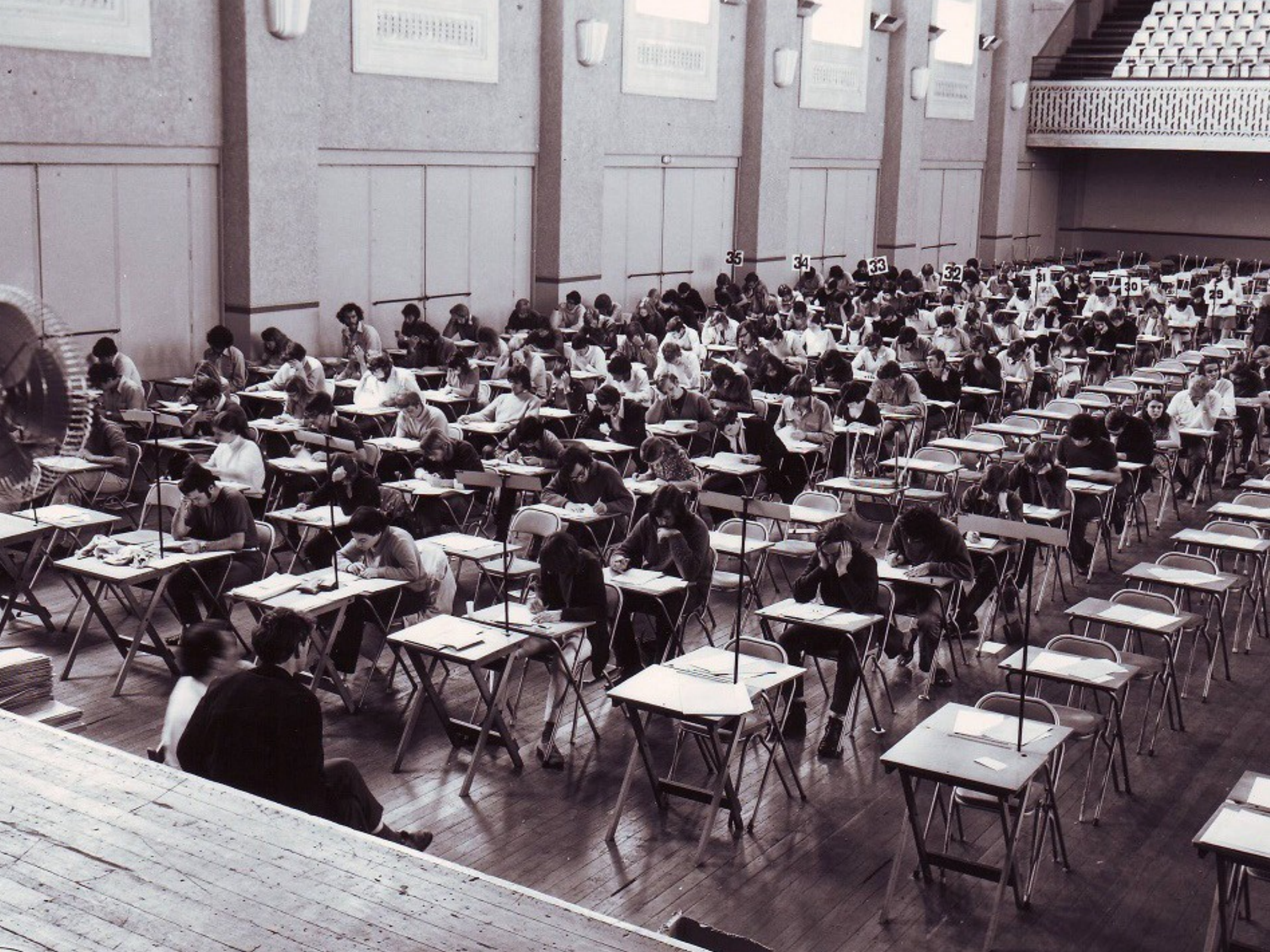
What are the factors that determine the...
A... group...
The... and...
The... of...
The... of...


- 1. ...
- 2. ...
- 3. ...
- 4. ...
- 5. ...



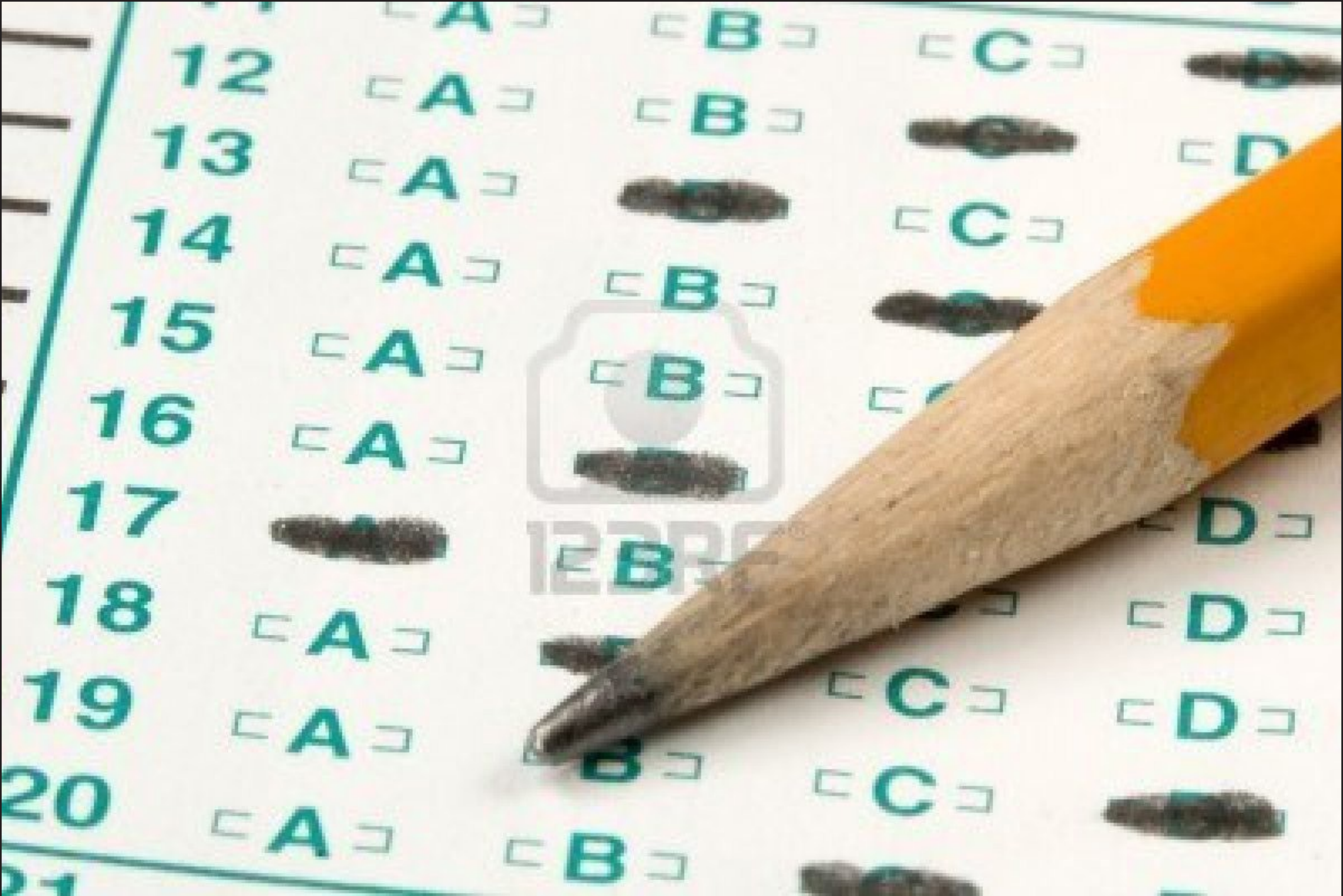








**assessment focussed on ranking and classifying,
not on developing 21st century skills**



1 what

2 how

3 when

what is the meaning/definition of...?

EDUCACION

inauthentic problem solving

EDUCACION

problem

EDUCACION

problem

outcome

EDUCACION

problem

outcome

KNOWN

EDUCACION

problem

solution

outcome

KNOWN

EDUCACION

problem

solution

outcome

UNKNOWN

KNOWN

EDUCACION

problem

solution

outcome

UNKNOWN → KNOWN

problem

problem

solution

outcome

UNKNOWN

KNOWN

problem

procedure

KNOWN

problem

solution

outcome

UNKNOWN

KNOWN

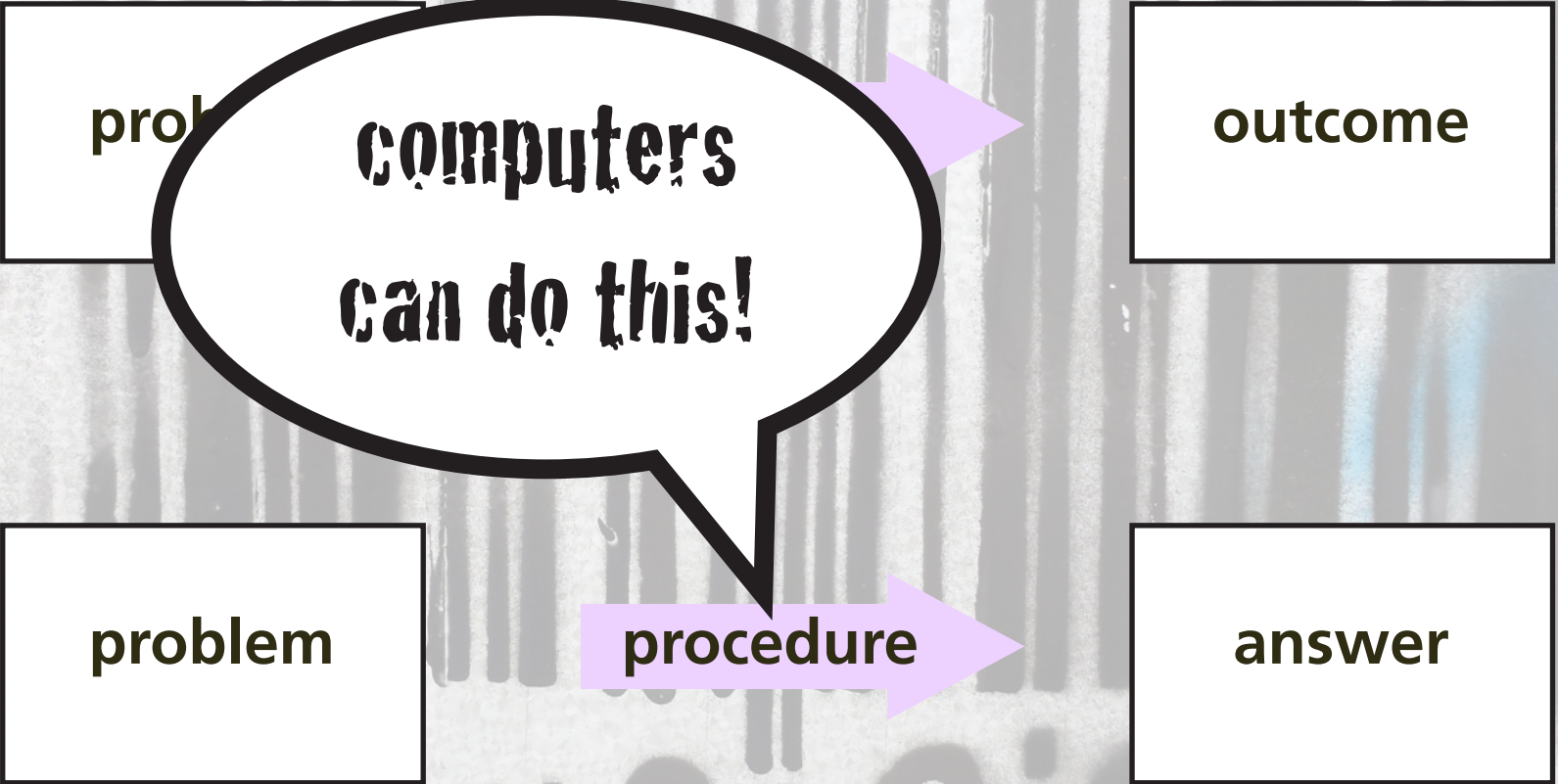
problem

procedure

answer

KNOWN

UNKNOWN







1 what

problem

solution

outcome

problem

pre... ver

REAL
problem solving

problem

approach 1

approach 3

approach 2

outcome

EDUCACION

problem

approach 1

approach 3

approach 2

outcome

grading incompatible with real problem solving



1 what

2 how



isolation

1 what

2 how



open-book exam

1 what

2 how

Google™

1 what

2 how



1 what

2 how

④ We will use spherical coordinates:

$0 \leq \rho \leq 4$, $0 \leq \theta \leq 2\pi$, $0 \leq \varphi \leq \pi$. The integral is thus:

$$\int_{\rho=0}^4 \int_{\theta=0}^{2\pi} \int_{\varphi=0}^{\pi} (\rho \cos \varphi) (\rho \sin \varphi) \rho \, d\varphi \, d\theta \, d\rho$$

$$= \left\{ \int_{\rho=0}^4 \rho^3 \, d\rho \right\} \left\{ \int_{\theta=0}^{2\pi} d\theta \right\} \left\{ \int_{\varphi=0}^{\pi} \sin(2\varphi) \, d\varphi \right\} = \boxed{0}$$

Since the third integral equals 0.

⑤ Direction vectors for the plane are

$$(1) \quad (1) \quad (0) \quad (0) \quad (1) \quad (-1)$$

1 what

2 how

3 when

high-stakes examinations promote cramming



1 what

2 how

3 when



information stored in short-term memory



1 what

2 how

3 when



no retention

information stored in short-term memory

no transfer



1 what

2 how

3 when

④ We will use spherical coordinates:

$0 \leq \rho \leq 4$, $0 \leq \theta \leq 2\pi$, $0 \leq \phi \leq \pi$. The integral is thus:

$$\int_{\rho=0}^4 \int_{\theta=0}^{2\pi} \int_{\phi=0}^{\pi} (\rho \cos \phi) (\rho^2 \sin \phi) d\phi d\theta d\rho$$

high-stakes assessment:

the silent killer of educational innovation

$$= \left\{ \int_{\rho=0}^4 \rho^3 d\rho \right\} \left\{ \int_{\theta=0}^{2\pi} d\theta \right\} \left\{ \frac{1}{2} \int_{\phi=0}^{\pi} \sin(2\phi) d\phi \right\} = \boxed{0}$$

Since the third integral equals 0.

⑤ Direction vectors for the plane are

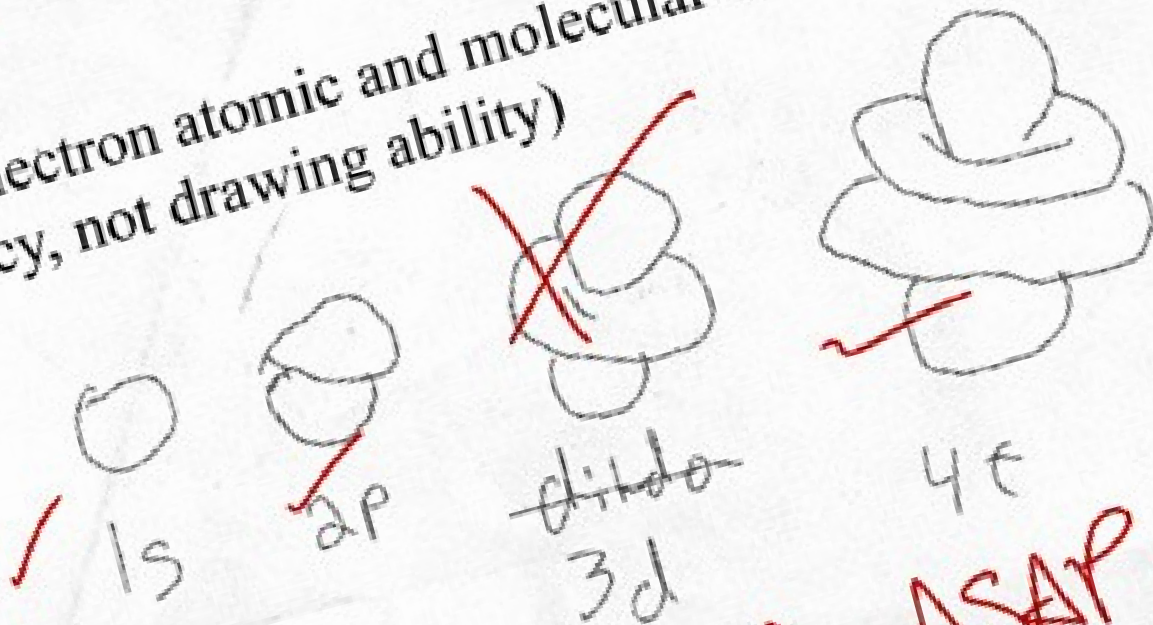
$$\begin{pmatrix} 1 \\ 1 \\ 0 \end{pmatrix}, \begin{pmatrix} 1 \\ 1 \\ 0 \end{pmatrix}, \begin{pmatrix} 0 \\ 1 \\ -1 \end{pmatrix}, \begin{pmatrix} 0 \\ 1 \\ -1 \end{pmatrix}, \begin{pmatrix} 1 \\ 1 \\ 0 \end{pmatrix}, \begin{pmatrix} 1 \\ 1 \\ 0 \end{pmatrix}, \begin{pmatrix} 0 \\ 1 \\ -1 \end{pmatrix}, \begin{pmatrix} 0 \\ 1 \\ -1 \end{pmatrix}$$

chemical (DIA)
unrelated, I saw my T.A., Jimmy, kissing
chemical reaction does one of two things to involved substance

MICK IN FRONT OF
UNWEAVING A WHIT
VICTORIAS SECRET
A CREDIT
inappropriate

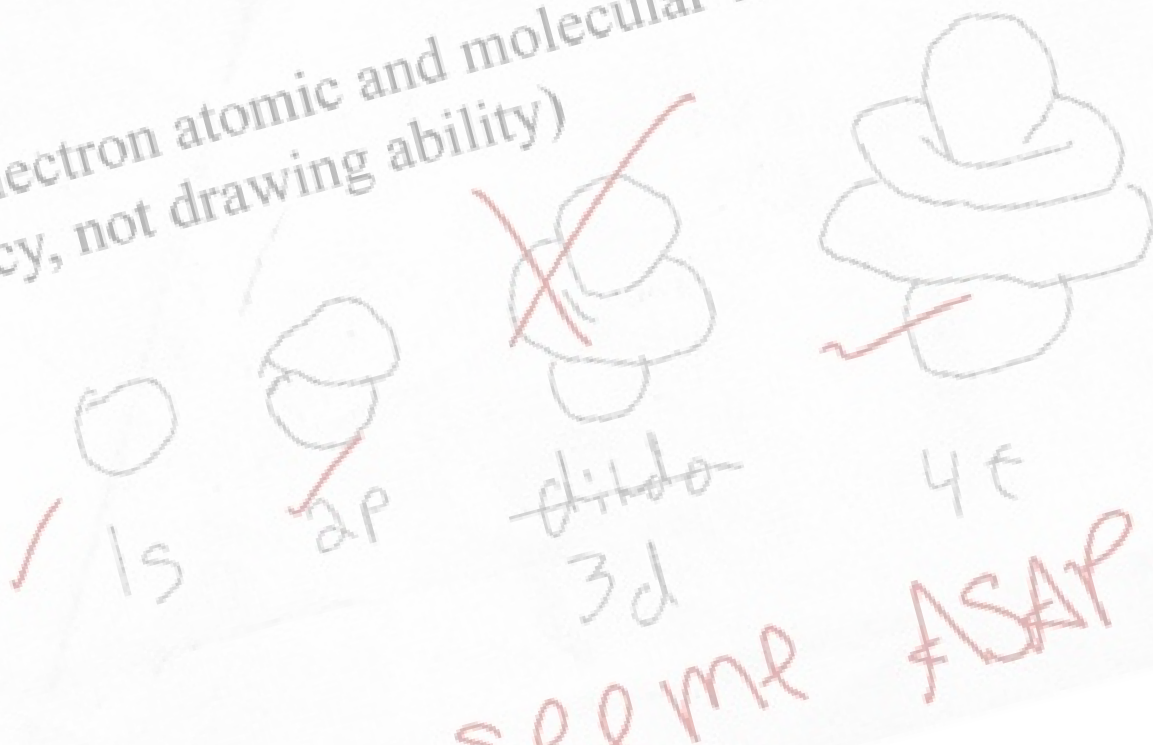
INCREASES OR DECREASES THE
ENERGY OF THE SUBSTANCE
INVOLVED ... SOMETIMES THROUGH
THE FORM OF HEAT OR LIGHT

a representation of electron atomic and molecular orbitals 1s, 2p, 3d and 4f.
more not based on accuracy, not drawing ability)



SOOME
ASAP

grades: measure of standing relative to others



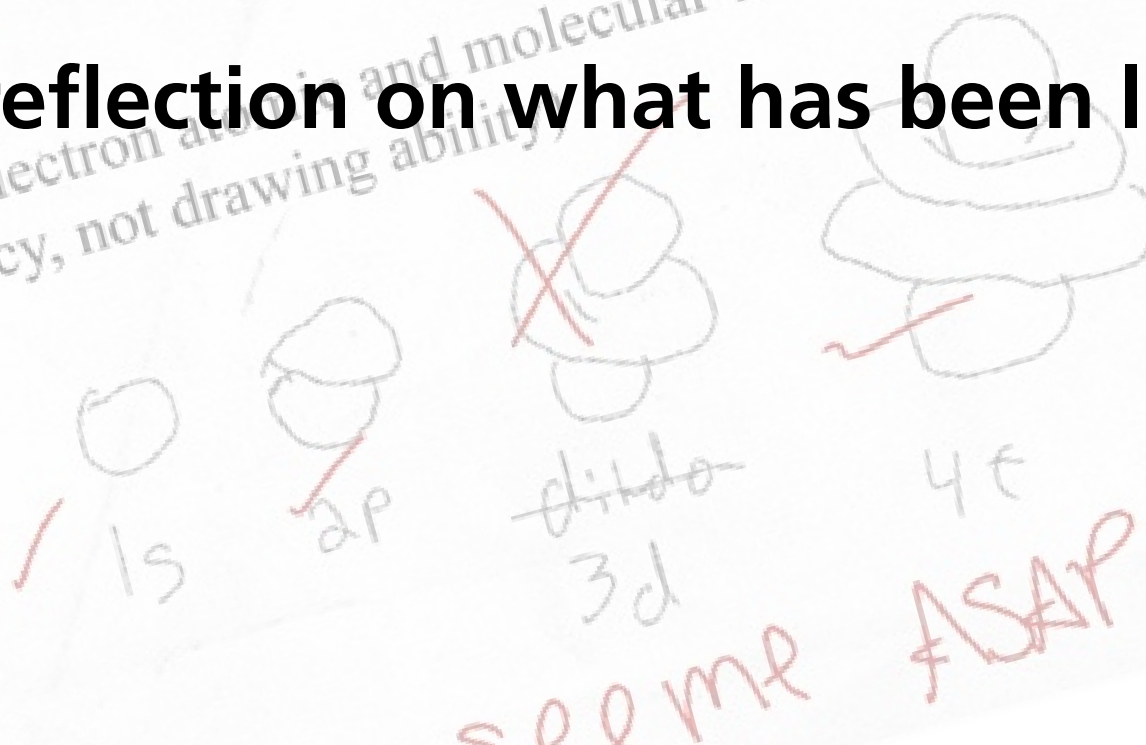
1 what

2 how

3 when

grades: measure of standing relative to others

feedback: reflection on what has been learnt

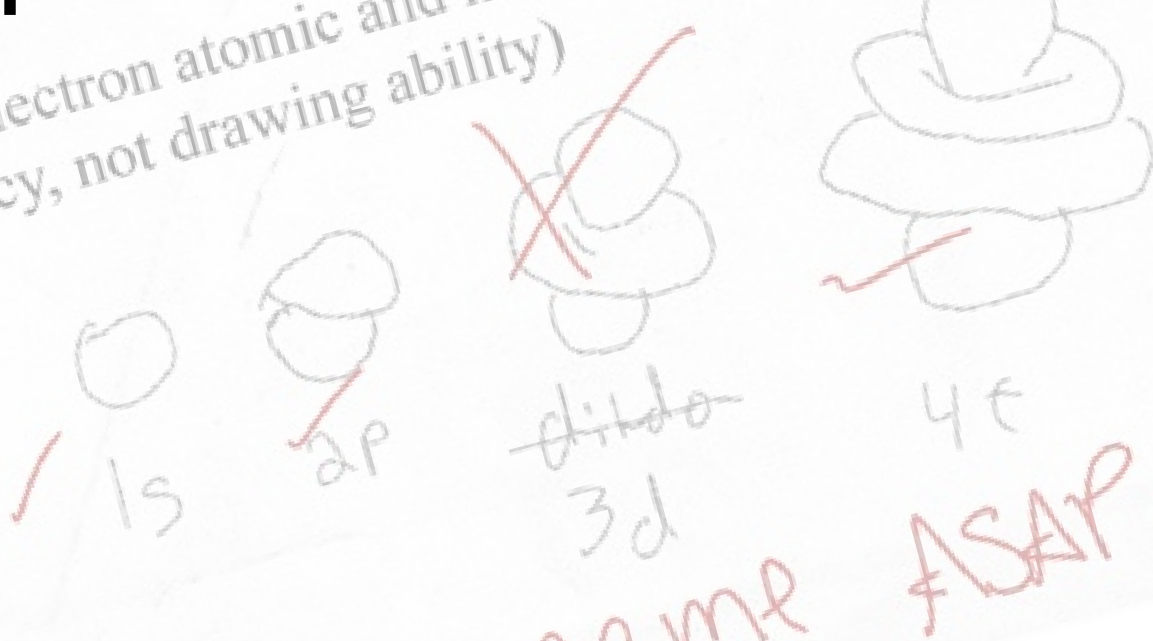


1 what

2 how

3 when

peer- and self-assessment



1 what

2 how

3 when



A large, empty classroom with rows of desks and chairs. The room has a light blue floor with yellow and red lines. The walls are light-colored wood paneling. In the background, there are bleachers and a whiteboard. The text "rethink assessment" is overlaid in the center in a large, bold, black font with a blue outline.

**rethink
assessment**

A large, empty classroom with rows of desks and chairs. The room has a light blue floor with yellow and red lines. The walls are light-colored wood paneling. There are several doors in the background. The text "...so it supports learning" is overlaid in the center of the image.

...so it supports learning



...so it supports learning

- focus on skills, not content**

A large, empty classroom with rows of desks and chairs, suggesting a focus on learning environment. The room has a blue floor with yellow and red lines, and a wooden wall with a whiteboard and doors in the background.

...so it supports learning

- focus on skills, not content**
- change assessment environment**

A large, empty classroom with rows of desks and chairs, suggesting a focus on learning environment. The room has a blue floor with yellow and red lines, and a whiteboard in the background.

...so it supports learning

- focus on skills, not content**
- change assessment environment**
- encourage ownership of learning**



feedback

1 lecture

2 PI

3 PI 2.0



1991



1 lecture

2 PI

3 PI 2.0



1993

A black handheld remote control is shown at an angle. It features a numeric keypad with buttons for digits 1 through 9, 0, and a red power button. A green logo with the letters 'FRS' is visible on the bottom right. The year '1998' is overlaid in large white text in the center.

1998



1 lecture

2 PI

3 PI 2.0



technology

1 lecture

2 PI

3 PI 2.0



How do I...

- design good questions?
- optimize the discussions?
- manage time?

Use intelligent algorithms and data analytics to...

- improve questioning
- manage discussions
- facilitate time management/flow

- lowest
- a. A 30-year fixed rate mortgage at 12%
 - b. A 15-year fixed rate mortgage at 12%
 - c. A 30-year fixed rate mortgage at 12%
 - d. A 15-year fixed rate mortgage at 12%
2. The biggest factor that leads American companies to manufacture their products overseas in India is:
- a. Higher quality of craftsmanship
 - b. Lower labor costs
 - c. Decreased transportation costs
 - d. Effective legal systems
3. Which of the following correctly summarizes the accounting equation for a sole proprietorship?
- a. $\text{Assets} = \text{Liabilities} + \text{Owners' equity}$
 - b. $\text{Liabilities} = \text{Assets} + \text{Owners' equity}$
 - c. $\text{Owner's equity} = \text{Assets} + \text{Liabilities}$
 - d. $\text{Revenue} = \text{Assets} - \text{Liabilities}$
4. In order to present a business plan to a group of potential investors, a businessperson would most likely use which of the following?
- a. Powerpoint
 - b. Quickbooks
 - c. Peoplesoft
 - d. Excel
5. In order to start an online business, and individual would need all but which of the following:
- a. business model
 - b. depreciation?

extensible plug-in architecture for question types

- lowest
- A 30-year fixed rate mortgage at 12%
 - A 15-year fixed rate mortgage at 12%
 - A 30-year fixed rate mortgage at 12%
 - A 15-year fixed rate mortgage at 12%
2. The biggest factor that leads American companies to manufacture their products over India is:
- Higher quality of craftsmanship
 - Lower labor costs
 - Decreased transportation costs
 - Effective legal systems
3. Which of the following correctly summarizes the accounting equation for a sole proprietorship?
- $\text{Assets} = \text{Liabilities} + \text{Owners' equity}$
 - $\text{Liabilities} = \text{Assets} + \text{Owners' equity}$
 - $\text{Owner's equity} = \text{Assets} + \text{Liabilities}$
 - $\text{Revenue} = \text{Assets} - \text{Liabilities}$
4. In order to present a business plan to a group of potential investors, a businessperson should most likely use which of the following?
- Powerpoint
 - Quickbooks
 - Peoplesoft
 - Excel
5. In order to start an online business, an individual would need all but which of the following:
- business model
 - depreciation?

Sample question types:

- direction
- expression
- long answer, short answer, word cloud (fill in text)
- multiple-choice, many-choice
- numerical (enter a number)
- ranking
- region (select point on image)
- sketch

Think of something you are good at

How did you become good at this?

EDUCACION

Became good at it by:

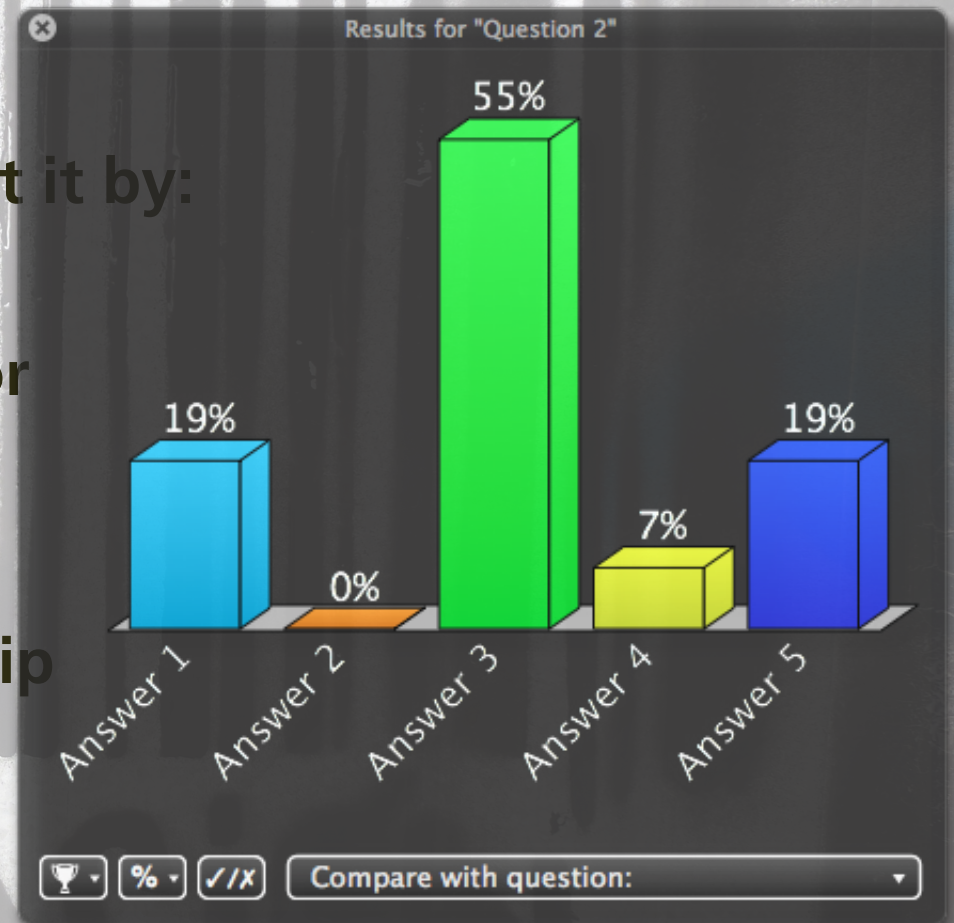
- 1. trial and error**
- 2. lectures**
- 3. practicing**
- 4. apprenticeship**
- 5. other**

EDUCACION



Became good at it by:

1. trial and error
2. lectures
3. practicing
4. apprenticeship
5. other





Carrier



10:24 PM



Leave

session 123456

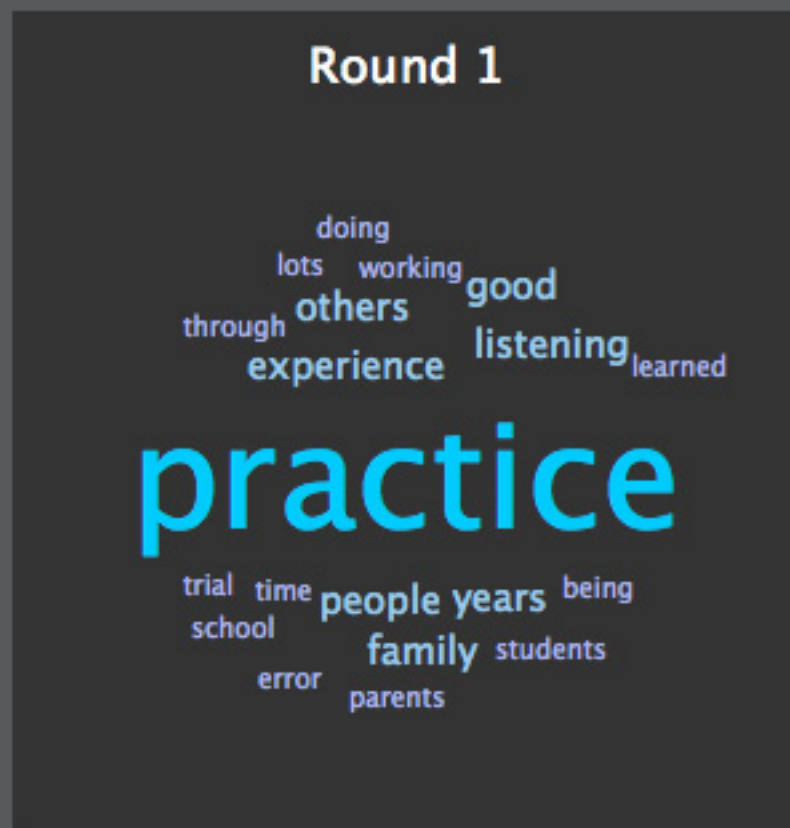
Logout

Now describe in a couple of words how you became good at whatever it is you entered in the previous question.

Submit response

Class session: 123456

Now describe in a couple of words how you became good at whatever it is you entered in the previous question.





1 education

2 PI

3 PI 2.0

learning | catalytics

[Courses](#) [Participate](#) [Review](#) [Classrooms](#) [Account](#) [Institutions](#) [Purchases](#) [Users](#) [Tour](#) [Help](#)

4. direction This image shows Oahu as seen from the Space Shuttle. The image provides several clues about the direction of prevailing winds in Oahu. Indicate this direction by drawing an arrow on your screen. [Deliver](#) [Show all results](#)

1 education

2 PI

3 PI 2.0

learning | catalytics

[Courses](#) [Participate](#) [Review](#) [Classroom](#) [Institutions](#) [Purchases](#) [Users](#) [Tour](#) [Help](#)

4. direction
prevailing

...le. The image provides several clues about the direction of
...on your screen.

[Deliver](#) [Show all results](#)



1 educa

3 PI 2.0

learning | catalytics

[Courses](#) [Participate](#) [Review](#) [Classroom](#) [Institutions](#) [Purchases](#) [Users](#) [Tour](#) [Help](#)

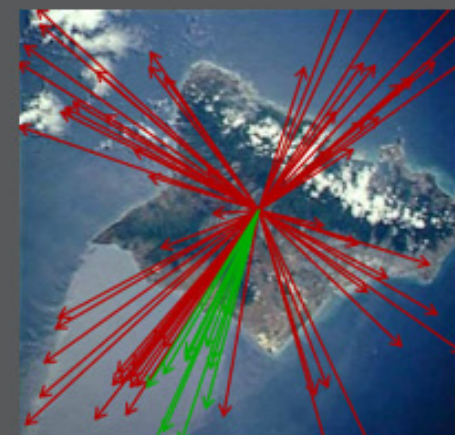
4. direction
prevailing

...le. The image provides several clues about the direction of
...on your screen.

[Deliver](#) [Show all results](#)

Round 1

77 responses, 16% correct



✓ 17 get it now
✗ 3 still don't get it



1 educa

3 PI 2.0

learning | catalytics

[Courses](#) [Participate](#) [Review](#) [Classrooms](#) [Account](#) [Institutions](#) [Purchases](#) [Users](#) [Tour](#) [Help](#)

optics i

current session: 766079 | 69 students

[Back to all lectures](#) [Stop session](#) [Review results](#) [Seat map](#) [Show floating session ID](#) [Edit](#) [Delete](#)



Jump to ▾

1

2

3

4

5

6

7

8

9

10

11

12

13

14

15



4. direction Light enters horizontally into the combination of two perpendicular mirrors as shown below.

[Deliver](#) [Show all results](#)



Indicate the direction of the incident light after it reflects off of both mirrors.



feedback & support

1 education

2 PI

3 PI 2.0

learning | catalytics

[Courses](#) [Participate](#) [Review](#) [Classifications](#) [Purchases](#) [Users](#) [Tour](#) [Help](#)

current session: **766079** | 69 students

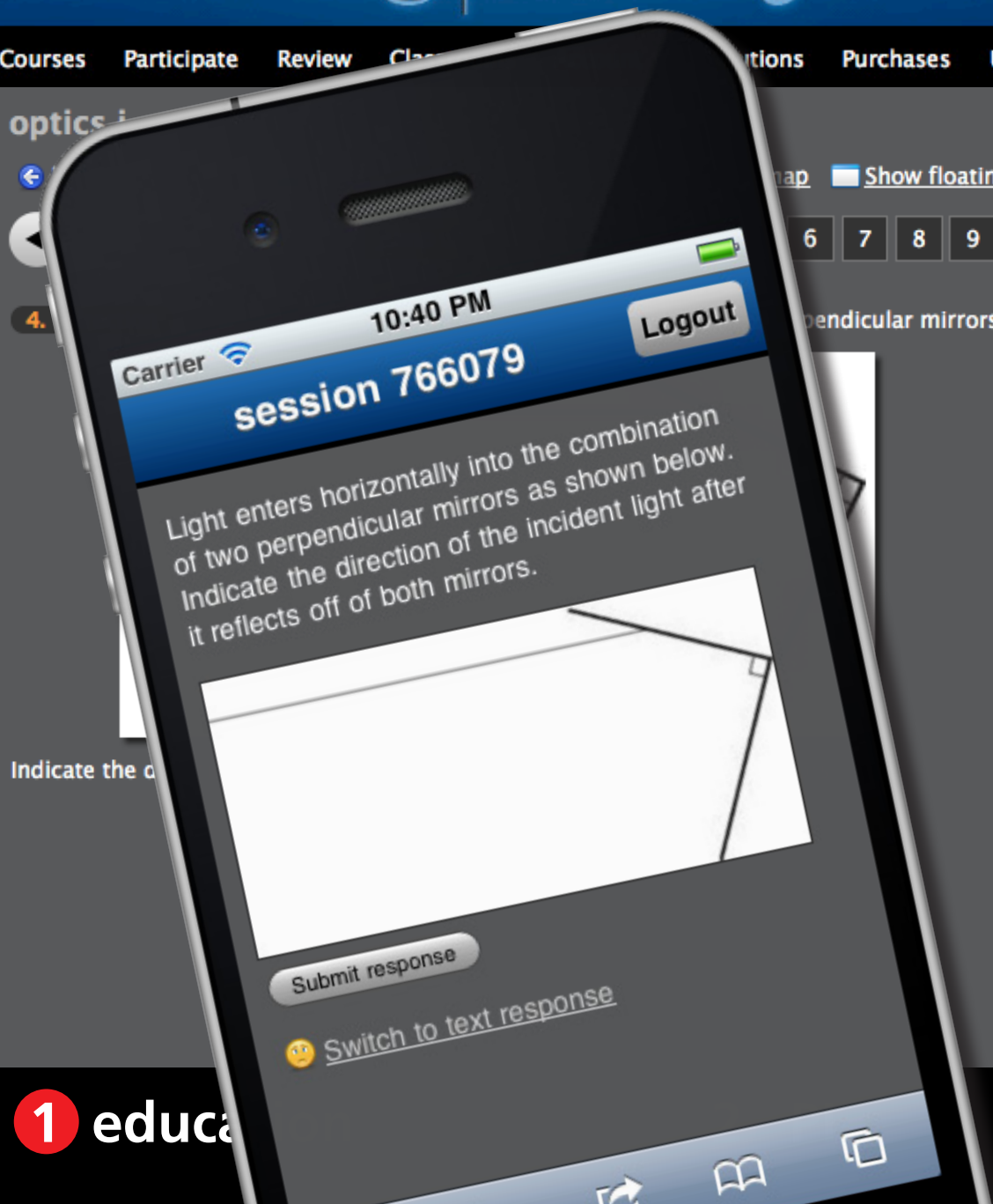
[Map](#) [Show floating session ID](#) [Edit](#) [Delete](#)

6 7 8 9 10 11 12 13 14 15

perpendicular mirrors as shown below.

[Deliver](#) [Show all results](#)

[feedback & support](#)



learning | catalytics

[Courses](#) [Participate](#) [Review](#) [Classifications](#) [Purchases](#) [Users](#) [Tour](#) [Help](#)

current session: **766079** | 69 students

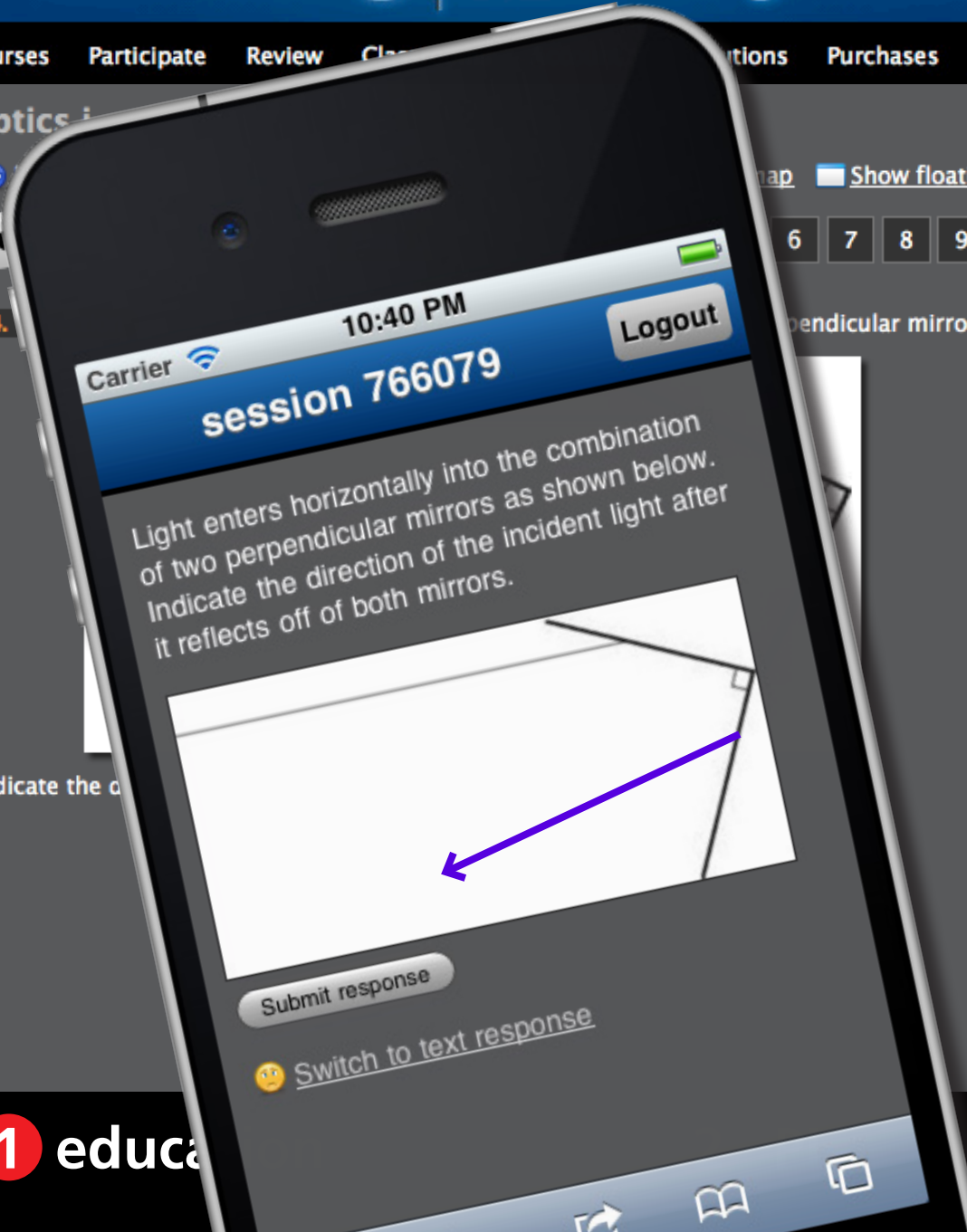
[Map](#) [Show floating session ID](#) [Edit](#) [Delete](#)

6 7 8 9 10 11 12 13 14 15

perpendicular mirrors as shown below.

[Deliver](#) [Show all results](#)

[feedback & support](#)



learning | catalytics

[Courses](#) [Participate](#) [Review](#) [Classifications](#) [Purchases](#) [Users](#) [Tour](#) [Help](#)

current session: **766079** | 69 students

[Map](#) [Show floating session ID](#) [Edit](#) [Delete](#)

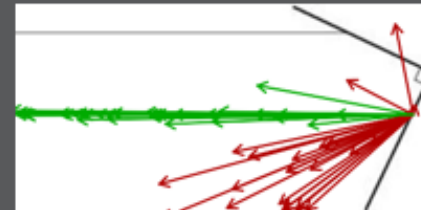
6 7 8 9 10 11 12 13 14 15

perpendicular mirrors as shown below.

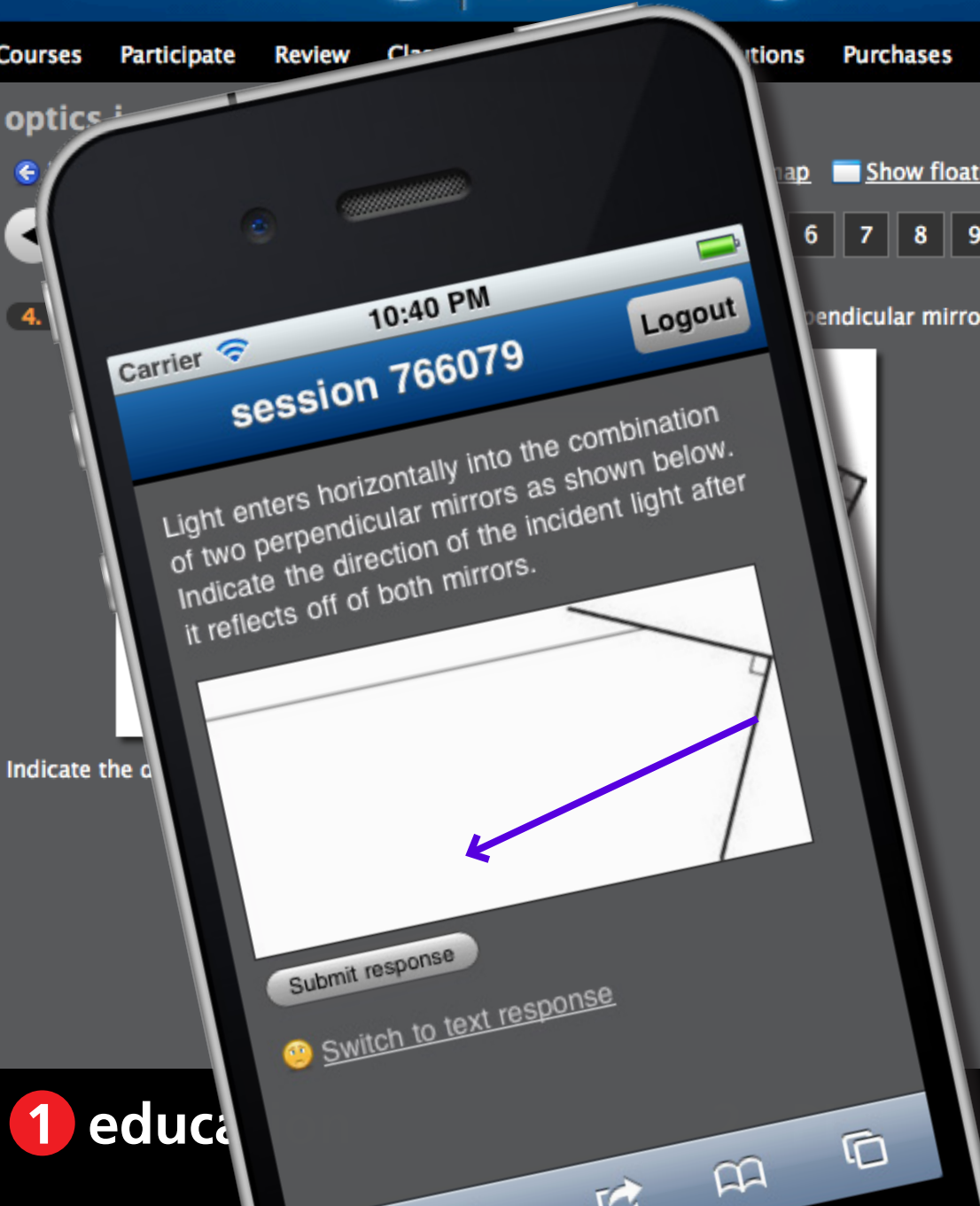
[Deliver](#) [Show all results](#)

Round 1 [✖](#) [📊](#) [📄](#)

57 responses, 58% correct



[📢 feedback & support](#)



learning | catalytics

[Courses](#) [Participate](#) [Review](#) [Classifications](#) [Purchases](#) [Users](#) [Tour](#) [Help](#)

current session: **766079** | 69 students

[Map](#) [Show floating session ID](#) [Edit](#) [Delete](#)

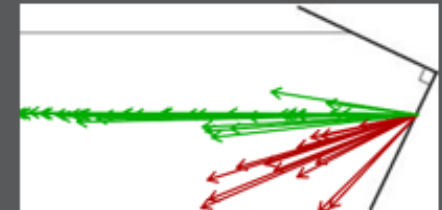
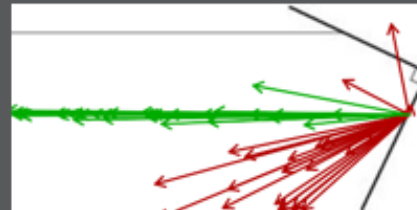
6 7 8 9 10 11 12 13 14 15

perpendicular mirrors as shown below.

[Deliver](#) [Show all results](#)

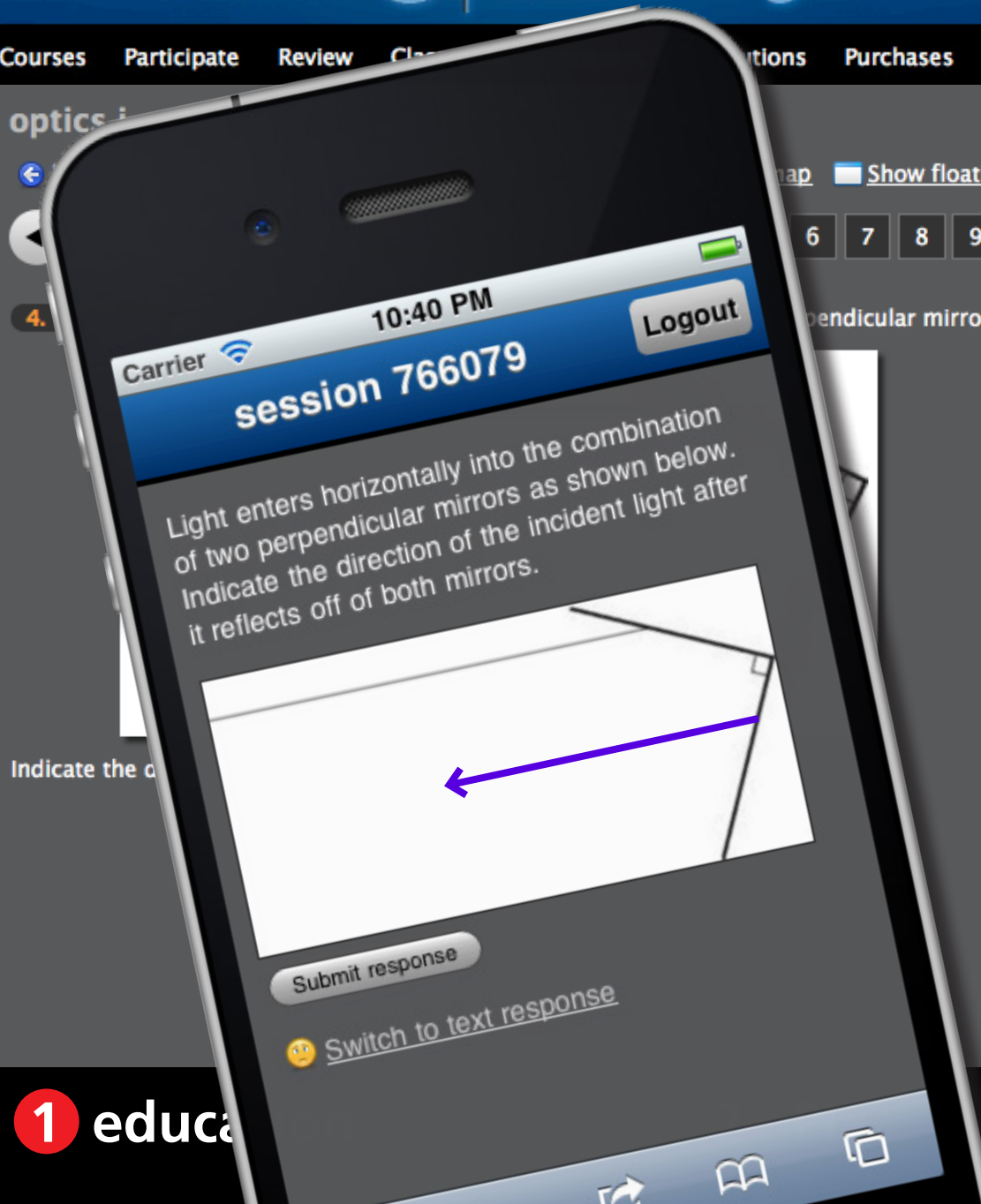
Round 1 [✖](#) [📊](#) [📄](#)
● 57 responses, 58% correct

Round 2 [✖](#) [📊](#) [📄](#)
● 51 responses, 73% correct



✓ 8 get it now
✗ 0 still don't get it

[📣 feedback & support](#)



learning | catalytics

[Courses](#) [Participate](#) [Review](#) [Classrooms](#) [Account](#) [Institutions](#) [Purchases](#) [Users](#) [Tour](#) [Help](#)

arlington school district

current session: **48222** | 24 students

[← Back to all lectures](#) [■ Stop session](#) [📊 Review results](#) [📄 Show floating session ID](#) [⚙ Edit](#) [✖ Delete](#)



Jump to ▾

1

2

3

4

5



5. region Where is Tanzania?

[✖ Stop delivery](#) [🔄 Deliver again](#) [👥 Assign groups](#) [📊 Show all results](#)



feedback & support

1 education

2 PI

3 PI 2.0

learning | catalytics

[Courses](#) [Participate](#) [Review](#) [Classrooms](#) [Account](#) [Institutions](#) [Purchases](#) [Users](#) [Tour](#) [Help](#)

arlington school district

current session: **48222** | 24 students

[Back to all lectures](#) [Stop session](#) [Review results](#) [Show floating session ID](#) [Edit](#) [Delete](#)



Jump to 1 2 3 4 5

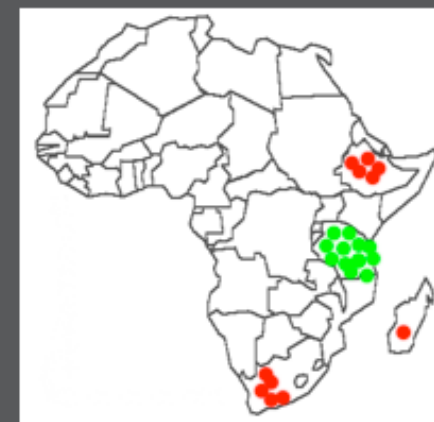


5. region Where is Tanzania?

[Stop delivery](#) [Deliver again](#) [Assign groups](#) [Show all results](#)



Round 1 ✕
● 24 responses, 75% correct



[feedback & support](#)

1 education

2 PI

3 PI 2.0

learning | catalytics

[Courses](#) [Participate](#) [Review](#) [Classrooms](#) [Account](#) [Institutions](#) [Purchases](#) [Users](#) [Tour](#) [Help](#)

transformations of parabolas

current session: **773885** | 9 students

[← Back to all lectures](#) [■ Stop session](#) [📊 Review results](#) [📄 Show floating session ID](#) [⚙ Edit](#) [📄 PDF](#) [✖ Delete](#)



Jump to ▾

1

2

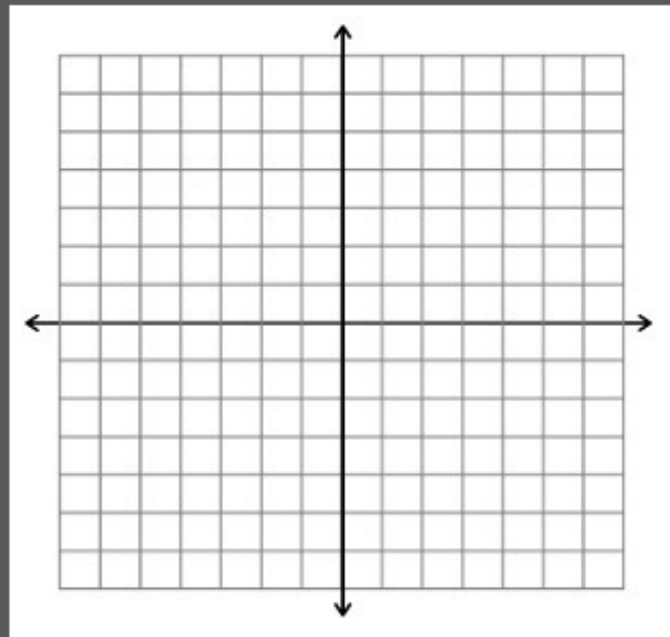
3

4



4. sketch Sketch a graph of the function $f(x) = (x - 3)^2 + 2$.

[✖ Stop delivery](#) [🔄 Deliver again](#) [👥 Assign groups](#) [📊 Show all results](#)



1 education

2 PI

3 PI 2.0

learning | catalytics

[Courses](#) [Participate](#) [Review](#) [Classrooms](#) [Account](#) [Institutions](#) [Purchases](#) [Users](#) [Tour](#) [Help](#)

transformations of parabolas

current session: **773885** | 9 students

[Back to all lectures](#) [Stop session](#) [Review results](#) [Show floating session ID](#) [Edit](#) [PDF](#) [Delete](#)



Jump to ▾

1

2

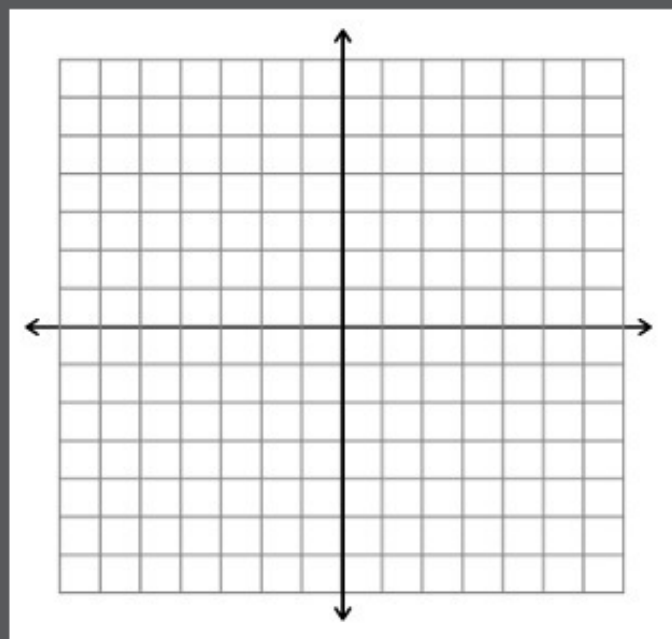
3

4



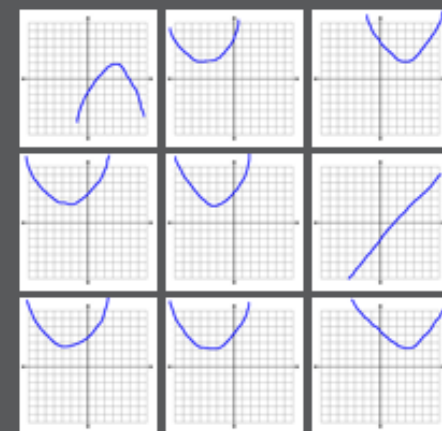
4. sketch Sketch a graph of the function $f(x) = (x - 3)^2 + 2$.

[Stop delivery](#) [Deliver again](#) [Assign groups](#) [Show all results](#)



Round 1

9 responses



1 education

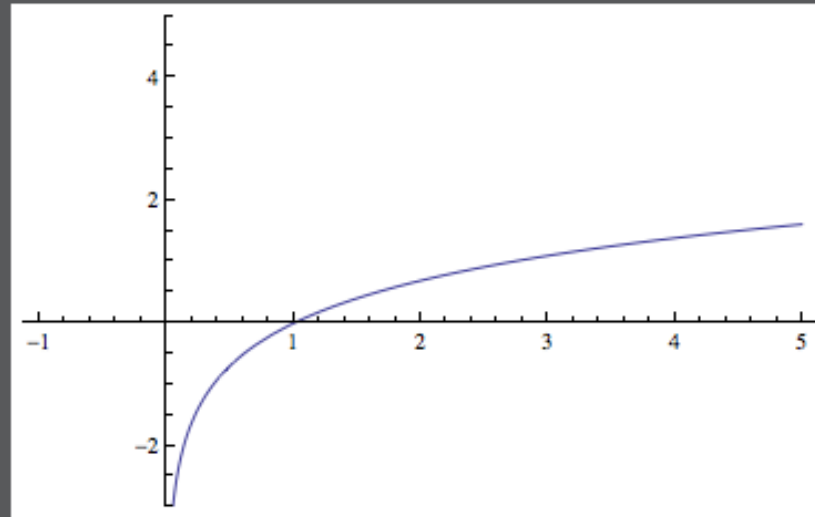
2 PI

3 PI 2.0

learning | catalytics

[Courses](#) [Participate](#) [Review](#) [Classrooms](#) [Account](#) [Institutions](#) [Purchases](#) [Users](#) [Tour](#) [Help](#)

This is a graph of $f(x) = \ln x$. Sketch a graph of the derivative $f'(x)$.



1 education

2 PI

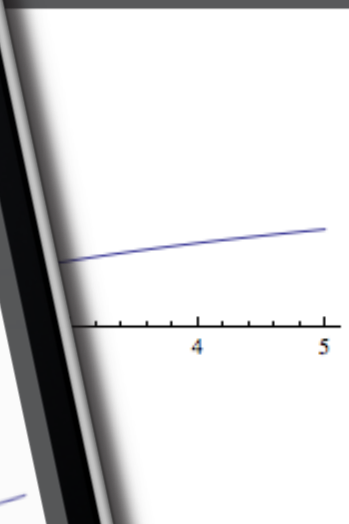
3 PI 2.0

learning | catalytics

Courses Participate

ases Users Tour Help

This is a graph of $f(x) =$



1 education

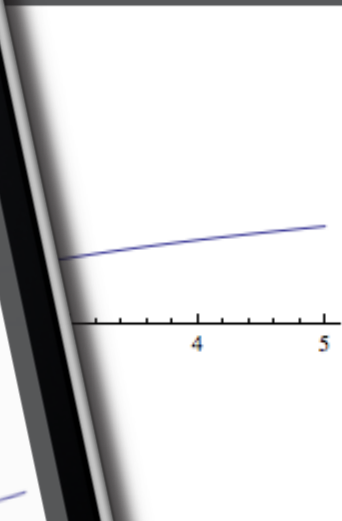
3 PI 2.0

learning | catalytics

Courses Participate

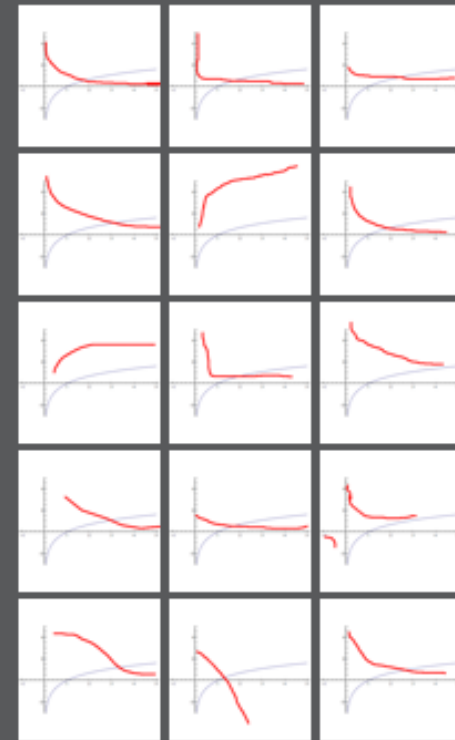
ases Users Tour Help

This is a graph of $f(x) =$



Round 1

15 responses



✓ 6 get it now
 ✗ 0 still don't get it

1 education

3 PI 2.0

learning | catalytics

[Courses](#) [Participate](#) [Review](#) [Classrooms](#) [Account](#) [Institutions](#) [Purchases](#) [Users](#) [Tour](#) [Help](#)

1. highlighting What do you see as the most important part of this Shakespeare sonnet? [Stop delivery](#) [Deliver again](#) [Assign groups](#) [Show all results](#)

For shame! deny that thou bear'st love to any,
Who for thyself art so unprovident.
Grant, if thou wilt, thou art beloved of many,
But that thou none lovest is most evident;
For thou art so possess'd with murderous hate
That 'gainst thyself thou stick'st not to conspire.
Seeking that beauteous roof to ruinate
Which to repair should be thy chief desire.
O, change thy thought, that I may change my mind!
Shall hate be fairer lodged than gentle love?
Be, as thy presence is, gracious and kind,
Or to thyself at least kind-hearted prove:
Make thee another self, for love of me,
That beauty still may live in thine or thee.

1 education

2 PI

3 PI 2.0

learning | catalytics

[Courses](#) [Participate](#) [Review](#) [Classroom](#) [Institutions](#) [Purchases](#) [Users](#) [Tour](#) [Help](#)

1. highlighting
sonnet?

this Shakespeare

[Stop delivery](#)

[Deliver again](#)

[Assign groups](#)

[Show all results](#)



1 educa

3 PI 2.0

learning | catalytics

[Courses](#) [Participate](#) [Review](#) [Classroom](#) [Institutions](#) [Purchases](#) [Users](#) [Tour](#) [Help](#)

1. highlighting
sonnet?

[his Shakespeare](#) [Stop delivery](#) [Deliver again](#) [Assign groups](#) [Show all results](#)



Round 1

3 responses

For shame! deny that thou bear'st love to any,
Who for thyself art so unprovident.
Grant, if thou wilt, thou art beloved of many,
But that thou none lovest is most evident;
For thou art so possess'd with murderous hate
That 'gainst thyself thou stick'st not to
conspire.
**Seeking that beauteous roof to ruinate
Which to repair should be thy chief desire.**
O, change thy thought, that I may change my
mind!

Sample question types:

- direction
- expression
- long answer, short answer, word cloud (fill in text)
- multiple choice, many choice
- numerical (enter a number)
- ranking
- region (select point on image)
- sketch

data analytics



1 lecture

2 PI

3 PI 2.0



human interaction

1 lecture

2 PI

3 PI 2.0

Carrier 9:31 PM learning catalytics skywalker.seas.harvard.edu/class_sessions/399757/review_results Google Eric Mazur | Harvard University | Log out

learning | catalytics

Courses Participate Review Classrooms Account Institutions Users About

review results for session 399757 in electrostatic work and energy ii

Back to all lectures Download all results Jump to 1 2 3 4 5 6 7 8 9 10 11 12 13 14 15 16 17 18 19

Round 1 74 responses, 61% correct

A. 61%
B. 4%
C. 35%
D. 0%
E. 0%

Round 2 75 responses, 83% correct

A. 83%
B. 0%
C. 17%
D. 0%
E. 0%

A positively charged rod is held near a neutral conducting sphere as illustrated below. A positively charged particle is moved from point A to point B



A. positive
B. zero
C. negative
D. depends on the path taken from A to B
E. cannot be determined without knowing more about the polarization induced in the sphere

Search: _____

1 lecture

2 PI

3 PI 2.0

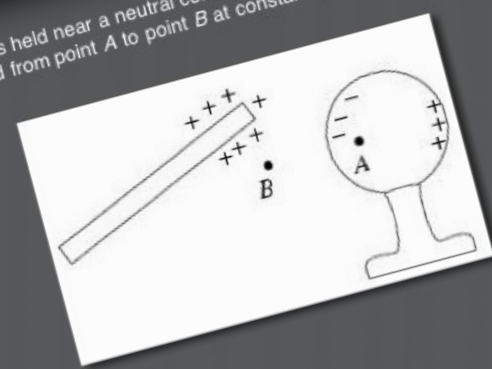
Carrier 9:31 PM learning catalytics skywalker.seas.harvard.edu/class_sessions/399757/review_results Google Eric Mazur | Harvard University | Log out

learning catalytics





A positively charged rod is held near a neutral conducting sphere as illustrated below. A positively charged particle is moved from point A to point B as illustrated below.



A. positive
 B. zero
 C. negative
 D. depends on the path taken from A to B
 E. cannot be determined without knowing more about the polarization induced in the sphere

Round 1
 74 responses, 61% correct

- A. 61%
- B. 4%
- C. 35%
- D. 0%
- E. 0%

Round 2
 75 responses, 83% correct

- A. 83%
- B. 0%
- C. 17%
- D. 0%
- E. 0%

Search: _____

1 lecture

2 PI

3 PI 2.0

Carrier 9:31 PM learning catalytics skywalker.seas.harvard.edu/class_sessions/399757/review_results Google Eric Mazur | Harvard University | Log out

learning | catalytics

Courses Participate Review Classrooms Account Institutions Users About

review results for session 399757 in electrostatic work and energy ii

Back to all lectures Download all results

Jump to 1 2 3 4 5 6 7 8 9 10 11 12 13 14 15 16 17 18 19

A positively charged rod is held near a neutral conducting sphere as illustrated below. A positively charged particle is moved from point A to point B



Round 1 74 responses, 61% correct

A. 61%
B. 4%
C. 35%
D. 0%
E. 0%

Round 2 75 responses, 83% correct

A. 83%
B. 0%
C. 17%
D. 0%
E. 0%

A. positive
B. zero
C. negative
D. depends on the path taken from A to B
E. cannot be determined without knowing more about the polarization induced in the sphere

Search: _____

1 lecture

2 PI

3 PI 2.0

Carrier 9:31 PM learning catalytics skywalker.seas.harvard.edu/class_sessions/399757/review_results Google Eric Mazur | Harvard University | Log out

learning catalytics





A positively charged rod is held near a neutral conducting sphere as illustrated below. A positively charged particle is moved from point A to point B as illustrated below.



A. positive
 B. zero
 C. negative
 D. depends on the path taken from A to B
 E. cannot be determined without knowing more about the polarization induced in the sphere

Round 1
 74 responses, 61% correct

A. 61%
 B. 4%
 C. 35%
 D. 0%
 E. 0%

Round 2
 75 responses, 83% correct

A. 83%
 B. 0%
 C. 17%
 D. 0%
 E. 0%

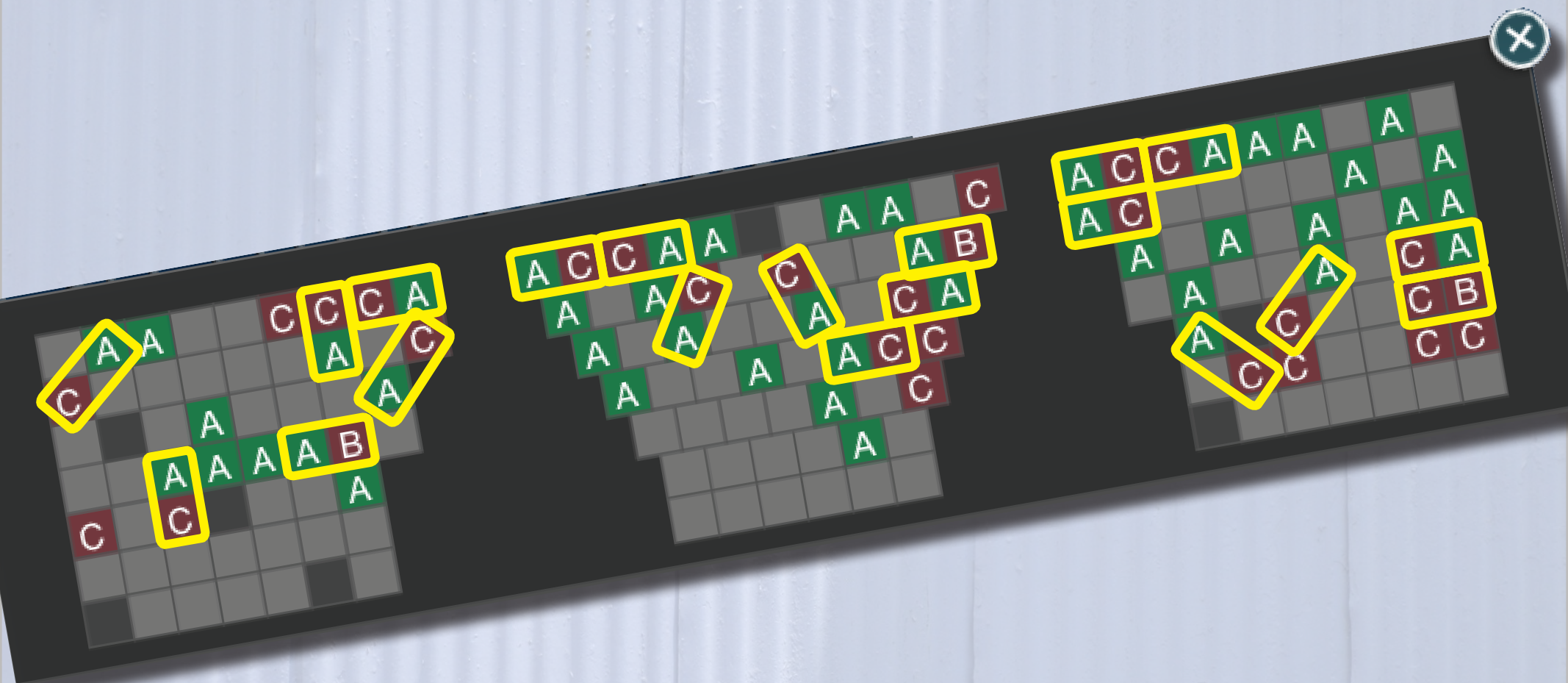
Search: _____

1 lecture

2 PI

3 PI 2.0

let system manage pairing



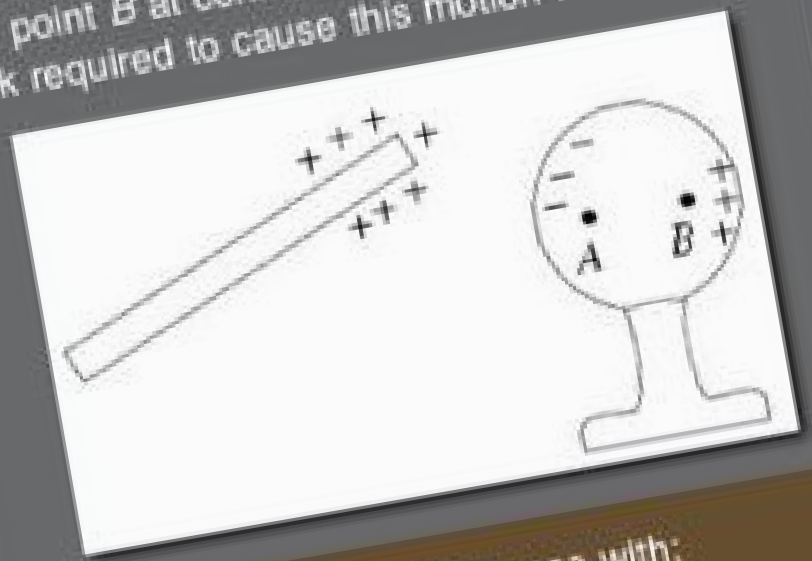
1 lecture

2 PI

3 PI 2.0

Leave

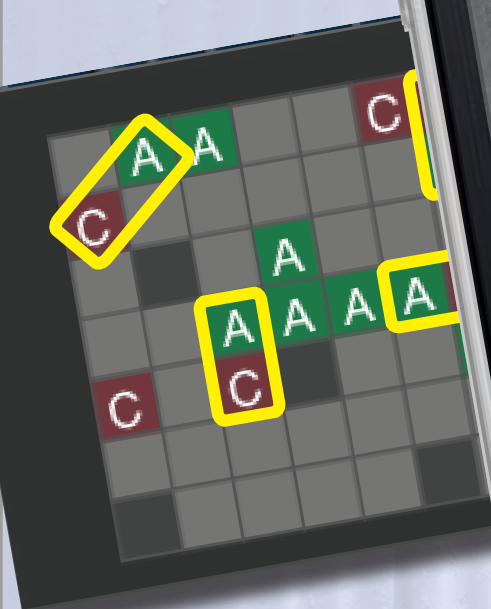
A positively charged rod is held near a neutral conducting sphere as illustrated below. A positively charged particle is moved from point A to point B at constant speed. The mechanical work required to cause this motion is



Please discuss your response with:

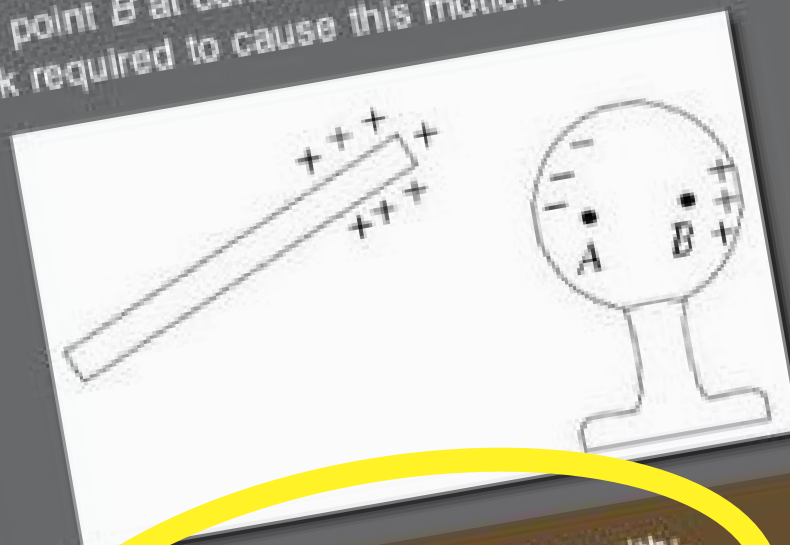
- Brian Lukoff (to your left)

I am talking to this person/people



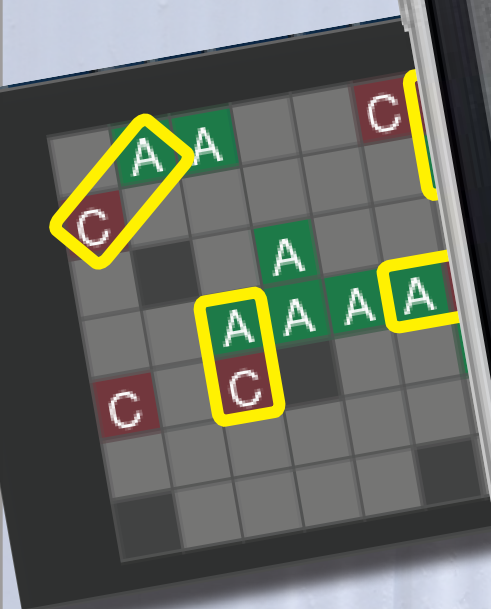
Leave

A positively charged rod is held near a neutral conducting sphere as illustrated below. A positively charged particle is moved from point A to point B at constant speed. The mechanical work required to cause this motion is



Please discuss your response with:

- Brian Lukoff (to your left)





mazur.harvard.edu

Follow me!  [eric_mazur](https://twitter.com/eric_mazur)