

1. Go to: <http://LCatalytics.com>

2. Create student account with signup code DEMO

3. Join session 1234567

EDUCACION

Learning Catalytics Demo



EDUCACION

Ohio State University
Columbus, OH, 14 February 2013



Learning Catalytics Demo



@eric_mazur

Ohio State University
Columbus, OH, 14 February 2013



feedback

1 lecture

2 PI

3 PI 2.0



1991



1 lecture

2 PI

3 PI 2.0



1993

A black handheld device, possibly a remote control or a small handheld computer, is shown at an angle. It features a keypad with circular buttons labeled with numbers 1 through 9, 0, and a power button. A green logo with the letters 'FRS' is visible on the lower right side of the device. The year '1998' is overlaid in large white text in the center of the image.

1998



1 lecture

2 PI

3 PI 2.0



technology

1 lecture

2 PI

3 PI 2.0



How do I...

- design good questions?
- optimize the discussions?
- manage time?

learning | catalytics

1 lecture

2 PI

3 PI 2.0

learning | catalytics



Gary King



Brian Lukoff



Eric Mazur

1 lecture

2 PI

3 PI 2.0

Use intelligent algorithms and data analytics to...

- improve questioning
- manage discussions
- facilitate time management/flow

- lowest
- a. A 30-year fixed rate mortgage at 12%
 - b. A 15-year fixed rate mortgage at 12%
 - c. A 30-year fixed rate mortgage at 12%
 - d. A 15-year fixed rate mortgage at 12%
2. The biggest factor that leads American companies to manufacture their products overseas in India is:
- a. Higher quality of craftsmanship
 - b. Lower labor costs
 - c. Decreased transportation costs
 - d. Effective legal systems
3. Which of the following correctly summarizes the accounting equation for a sole proprietorship?
- a. $\text{Assets} = \text{Liabilities} + \text{Owners' equity}$
 - b. $\text{Liabilities} = \text{Assets} + \text{Owners' equity}$
 - c. $\text{Owner's equity} = \text{Assets} + \text{Liabilities}$
 - d. $\text{Revenue} = \text{Assets} - \text{Liabilities}$
4. In order to present a business plan to a group of potential investors, a businessperson would most likely use which of the following?
- a. Powerpoint
 - b. Quickbooks
 - c. Peoplesoft
 - d. Excel
5. In order to start an online business, and individual would need all but which of the following:
- a. business model
 - b. depreciation?

extensible plug-in architecture for question types

- lowest
- A 30-year fixed rate mortgage at 12%
 - A 15-year fixed rate mortgage at 12%
 - A 30-year fixed rate mortgage at 12%
 - A 15-year fixed rate mortgage at 12%
2. The biggest factor that leads American companies to manufacture their products over India is:
- Higher quality of craftsmanship
 - Lower labor costs
 - Decreased transportation costs
 - Effective legal systems
3. Which of the following correctly summarizes the accounting equation for a sole proprietorship?
- $\text{Assets} = \text{Liabilities} + \text{Owners' equity}$
 - $\text{Liabilities} = \text{Assets} + \text{Owners' equity}$
 - $\text{Owner's equity} = \text{Assets} + \text{Liabilities}$
 - $\text{Revenue} = \text{Assets} - \text{Liabilities}$
4. In order to present a business plan to a group of potential investors, a businessperson should most likely use which of the following?
- Powerpoint
 - Quickbooks
 - Peoplesoft
 - Excel
5. In order to start an online business, an individual would need all but which of the following:
- Business model
 - Appreciation?

Sample question types:

- direction
- expression
- long answer, short answer, word cloud (fill in text)
- multiple-choice, many-choice
- numerical (enter a number)
- ranking
- region (select point on image)
- sketch

1. Go to: <http://LCatalytics.com>

2. Create student account with signup code DEMO

3. Join session 1234567

EDUCACION



1 lccatalytics.com **2** create student account **3** ID 1234567

learning | catalytics

[Courses](#) [Participate](#) [Review](#) [Classrooms](#) [Account](#) [Institutions](#) [Purchases](#) [Users](#) [Tour](#) [Help](#)

4. direction This image shows Oahu as seen from the Space Shuttle. The image provides several clues about the direction of prevailing winds in Oahu. Indicate this direction by drawing an arrow on your screen. [Deliver](#) [Show all results](#)

1 education

2 PI



3 PI 2.0

learning | catalytics

[Courses](#) [Participate](#) [Review](#) [Classroom](#) [Institutions](#) [Purchases](#) [Users](#) [Tour](#) [Help](#)

4. direction
prevailing

...le. The image provides several clues about the direction of
...on your screen.

 [Deliver](#)  [Show all results](#)



1 educa

3 PI 2.0

learning | catalytics

Courses Participate Review Classroom Institutions Purchases Users Tour Help

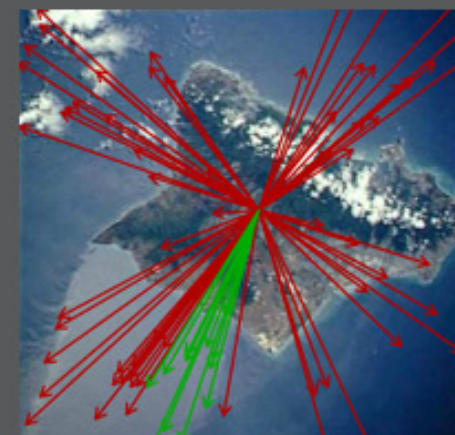
4. direction
prevailing

...le. The image provides several clues about the direction of
...on your screen.

[Deliver](#) [Show all results](#)

Round 1

77 responses, 16% correct



✓ 17 get it now
✗ 3 still don't get it



1 educa

3 PI 2.0

learning | catalytics

[Courses](#) [Participate](#) [Review](#) [Classrooms](#) [Account](#) [Institutions](#) [Purchases](#) [Users](#) [Tour](#) [Help](#)

optics i

current session: 766079 | 69 students

[Back to all lectures](#) [Stop session](#) [Review results](#) [Seat map](#) [Show floating session ID](#) [Edit](#) [Delete](#)



Jump to ▾

1

2

3

4

5

6

7

8

9

10

11

12

13

14

15



4. direction Light enters horizontally into the combination of two perpendicular mirrors as shown below.

[Deliver](#) [Show all results](#)



Indicate the direction of the incident light after it reflects off of both mirrors.



feedback & support

1 education

2 PI

3 PI 2.0

learning | catalytics

[Courses](#) [Participate](#) [Review](#) [Classifications](#) [Purchases](#) [Users](#) [Tour](#) [Help](#)

current session: **766079** | 69 students

[Map](#) [Show floating session ID](#) [Edit](#) [Delete](#)

6 7 8 9 10 11 12 13 14 15

perpendicular mirrors as shown below.

[Deliver](#) [Show all results](#)

[feedback & support](#)



learning | catalytics

[Courses](#) [Participate](#) [Review](#) [Classifications](#) [Purchases](#) [Users](#) [Tour](#) [Help](#)

current session: **766079** | 69 students

[Map](#) [Show floating session ID](#) [Edit](#) [Delete](#)

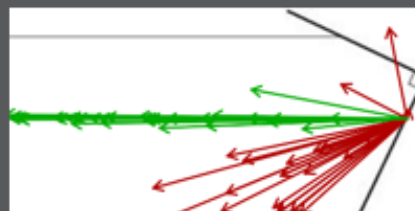
6 7 8 9 10 11 12 13 14 15



perpendicular mirrors as shown below.

[Deliver](#) [Show all results](#)

Round 1
● 57 responses, 58% correct



[feedback & support](#)



learning | catalytics

[Courses](#) [Participate](#) [Review](#) [Classifications](#) [Purchases](#) [Users](#) [Tour](#) [Help](#)

current session: **766079** | 69 students

[Map](#) [Show floating session ID](#) [Edit](#) [Delete](#)

6 7 8 9 10 11 12 13 14 15

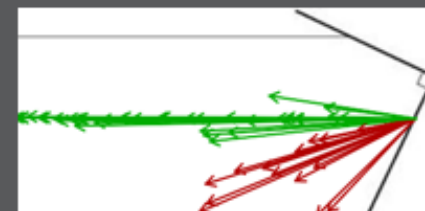
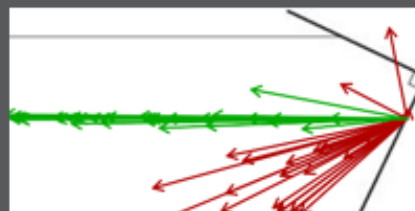


perpendicular mirrors as shown below.

[Deliver](#) [Show all results](#)

Round 1 [✖](#) [📊](#) [📄](#)
● 57 responses, 58% correct

Round 2 [✖](#) [📊](#) [📄](#)
● 51 responses, 73% correct



✓ 8 get it now
✗ 0 still don't get it

[📣 feedback & support](#)



learning | catalytics

[Courses](#) [Participate](#) [Review](#) [Classrooms](#) [Account](#) [Institutions](#) [Purchases](#) [Users](#) [Tour](#) [Help](#)

transformations of parabolas

current session: **773885** | 9 students

[← Back to all lectures](#) [■ Stop session](#) [📊 Review results](#) [📄 Show floating session ID](#) [⚙ Edit](#) [📄 PDF](#) [✖ Delete](#)



Jump to ▾

1

2

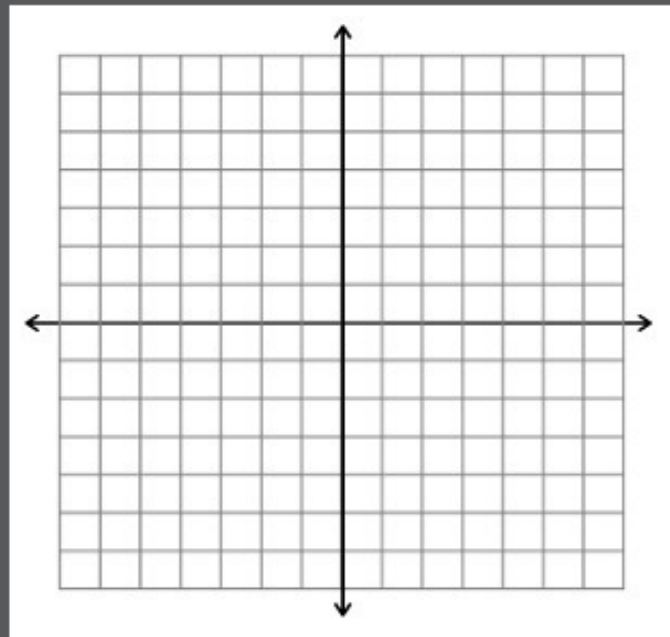
3

4



4. sketch Sketch a graph of the function $f(x) = (x - 3)^2 + 2$.

[✖ Stop delivery](#) [🔄 Deliver again](#) [👥 Assign groups](#) [📊 Show all results](#)



1 education

2 PI

3 PI 2.0

learning | catalytics

[Courses](#) [Participate](#) [Review](#) [Classrooms](#) [Account](#) [Institutions](#) [Purchases](#) [Users](#) [Tour](#) [Help](#)

transformations of parabolas

current session: **773885** | 9 students

[Back to all lectures](#) [Stop session](#) [Review results](#) [Show floating session ID](#) [Edit](#) [PDF](#) [Delete](#)



Jump to ▾

1

2

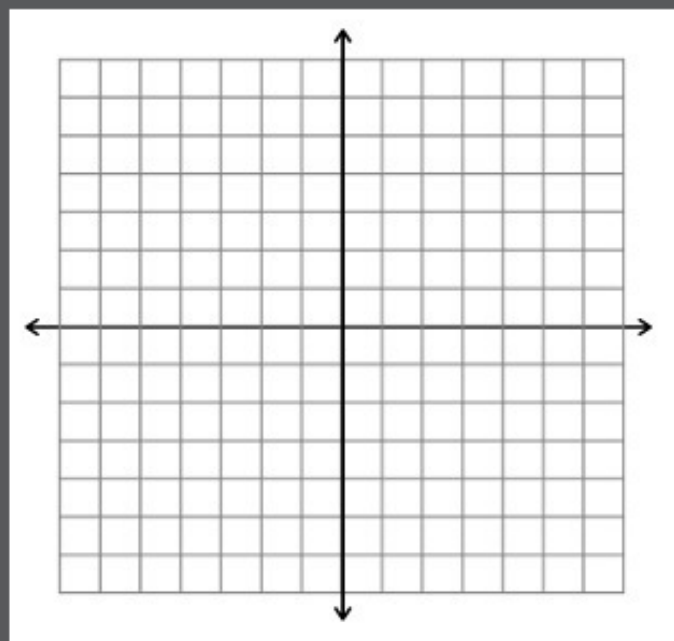
3

4



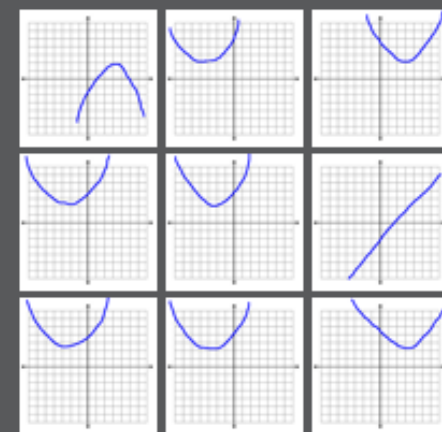
4. sketch Sketch a graph of the function $f(x) = (x - 3)^2 + 2$.

[Stop delivery](#) [Deliver again](#) [Assign groups](#) [Show all results](#)



Round 1

9 responses



1 education

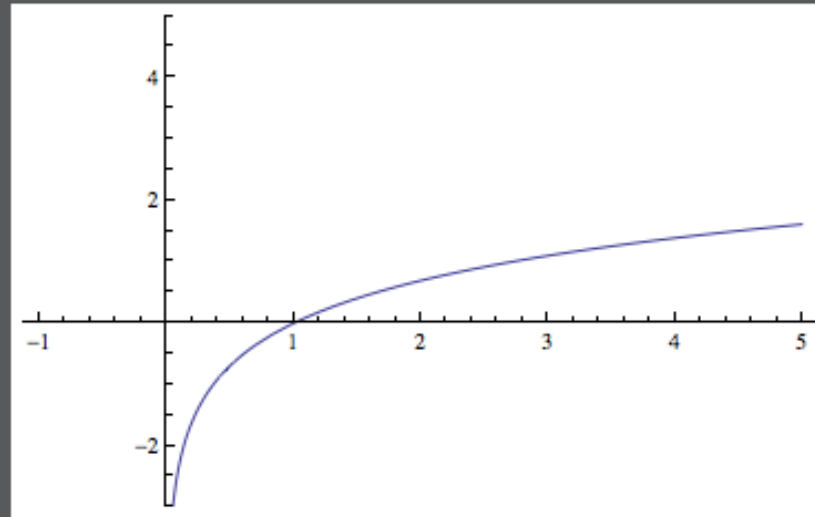
2 PI

3 PI 2.0

learning | catalytics

[Courses](#) [Participate](#) [Review](#) [Classrooms](#) [Account](#) [Institutions](#) [Purchases](#) [Users](#) [Tour](#) [Help](#)

This is a graph of $f(x) = \ln x$. Sketch a graph of the derivative $f'(x)$.



1 education

2 PI

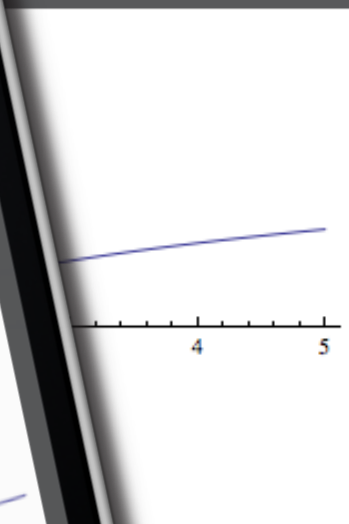
3 PI 2.0

learning | catalytics

Courses Participate

ases Users Tour Help

This is a graph of $f(x) =$



1 education

3 PI 2.0

learning | catalytics

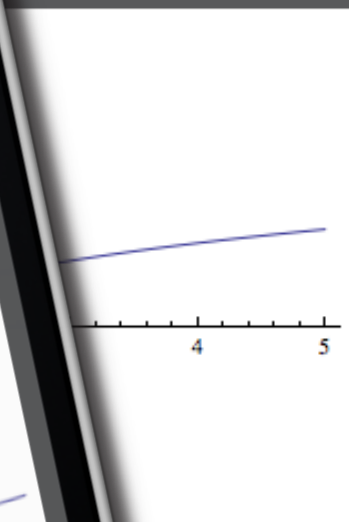
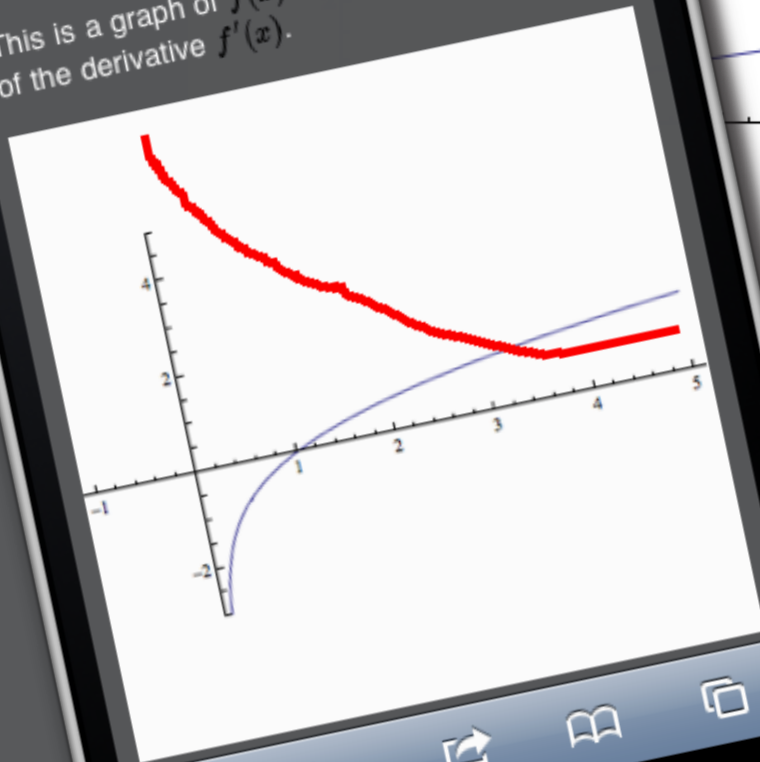
Courses Participate

ases Users Tour Help

This is a graph of $f(x) =$

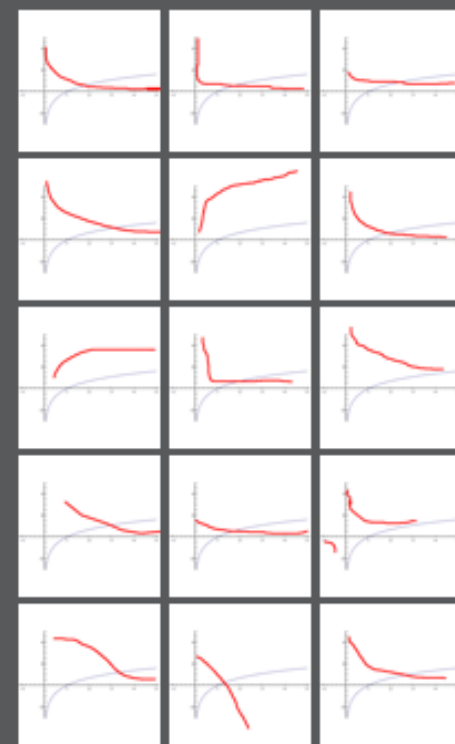


This is a graph of $f(x) = \ln x$. Sketch a graph of the derivative $f'(x)$.



Round 1

15 responses



✓ 6 get it now
 ✗ 0 still don't get it

1 education

3 PI 2.0

learning | catalytics

[Courses](#) [Participate](#) [Review](#) [Classrooms](#) [Account](#) [Institutions](#) [Purchases](#) [Users](#) [Tour](#) [Help](#)

1. highlighting What do you see as the most important part of this Shakespeare sonnet? [Stop delivery](#) [Deliver again](#) [Assign groups](#) [Show all results](#)

For shame! deny that thou bear'st love to any,
Who for thyself art so unprovident.
Grant, if thou wilt, thou art beloved of many,
But that thou none lovest is most evident;
For thou art so possess'd with murderous hate
That 'gainst thyself thou stick'st not to conspire.
Seeking that beauteous roof to ruinate
Which to repair should be thy chief desire.
O, change thy thought, that I may change my mind!
Shall hate be fairer lodged than gentle love?
Be, as thy presence is, gracious and kind,
Or to thyself at least kind-hearted prove:
Make thee another self, for love of me,
That beauty still may live in thine or thee.

1 education

2 PI

3 PI 2.0

learning | catalytics

[Courses](#) [Participate](#) [Review](#) [Classroom](#) [Institutions](#) [Purchases](#) [Users](#) [Tour](#) [Help](#)

1. highlighting
sonnet?

this Shakespeare

[Stop delivery](#)

[Deliver again](#)

[Assign groups](#)

[Show all results](#)



For shame
Who for t
Grant, if t
But that th
For thou a
That 'gainst
Seeking that
Which to rep
O, change th
Shall hate be
Be, as thy pres
Or to thyself a
Make thee ano
That beauty stil

What do you see as the most important part of this Shakespeare sonnet?

Highlight the passage below by clicking or tapping once to set the beginning of your highlight, and then clicking or tapping again to set the end.

For shame! deny that thou bear'st love to any,
Who for thyself art so unprovident.
Grant, if thou wilt, thou art beloved of many,
But that thou none lovest is most evident;
For thou art so possess'd with murderous hate
That 'gainst thyself thou stick'st not to
conspire.

Seeking that beauteous roof to ruinate
Which to repair should be thy chief desire.
O, change thy thought, that I may change my
mind!

1 educa

3 PI 2.0

learning | catalytics

[Courses](#) [Participate](#) [Review](#) [Classroom](#) [Institutions](#) [Purchases](#) [Users](#) [Tour](#) [Help](#)

1. highlighting
sonnet?

this Shakespeare

[Stop delivery](#)

[Deliver again](#)

[Assign groups](#)

[Show all results](#)

Round 1

3 responses

For shame! deny that thou bear'st
love to any,
Who for thyself art so
unprovident.

Grant, if thou wilt, thou art
beloved of many,

But that thou none lovest is most
evident;

For thou art so possess'd with
murderous hate

That 'gainst thyself thou stick'st
not to conspire.

**Seeking that beauteous roof to
ruinate**

Which to repair should be thy
chief desire.

O, change thy thought, that I may
change my mind!

Shall hate be fairer lodged than
gentle love?

Be, as thy presence is, gracious
and kind,



educa

PI 2.0

Sample question types:

- direction
- expression
- long answer, short answer, word cloud (fill in text)
- multiple choice, multiple choice
- numerical (enter a number)
- ranking
- region (select point on image)
- sketch

data analytics



1 lecture

2 PI

3 PI 2.0



human interaction

1 lecture

2 PI

3 PI 2.0

Carrier 9:31 PM learning catalytics skywalker.seas.harvard.edu/class_sessions/399757/review_results Google Eric Mazur | Harvard University | Log out

learning | catalytics

Courses Participate Review Classrooms Account Institutions Users About

review results for session 399757 in electrostatic work and energy ii

Back to all lectures Download all results Jump to 1 2 3 4 5 6 7 8 9 10 11 12 13 14 15 16 17 18 19

Round 1 74 responses, 61% correct

A. 61%
B. 4%
C. 35%
D. 0%
E. 0%

Round 2 75 responses, 83% correct

A. 83%
B. 0%
C. 17%
D. 0%
E. 0%

A positively charged rod is held near a neutral conducting sphere as illustrated below. A positively charged particle is moved from point A to point B



A. positive
B. zero
C. negative
D. depends on the path taken from A to B
E. cannot be determined without knowing more about the polarization induced in the sphere

Search: _____

1 lecture

2 PI

3 PI 2.0

Carrier 9:31 PM learning catalytics skywalker.seas.harvard.edu/class_sessions/399757/review_results Google Eric Mazur | Harvard University | Log out

learning catalytics





A positively charged rod is held near a neutral conducting sphere as illustrated below. A positively charged particle is moved from point A to point B as illustrated below.



A. positive
 B. zero
 C. negative
 D. depends on the path taken from A to B
 E. cannot be determined without knowing more about the polarization induced in the sphere

Round 1
 74 responses, 61% correct

A. 61%
B. 4%
C. 35%
D. 0%
E. 0%

Round 2
 75 responses, 83% correct

A. 83%
B. 0%
C. 17%
D. 0%
E. 0%

Search: _____

1 lecture

2 PI

3 PI 2.0

Carrier 9:31 PM learning catalytics skywalker.seas.harvard.edu/class_sessions/399757/review_results Google Eric Mazur | Harvard University | Log out

learning | catalytics

Courses Participate Review Classrooms Account Institutions Users About

review results for session 399757 in electrostatic work and energy ii

Back to all lectures Download all results Jump to 1 2 3 4 5 6 7 8 9 10 11 12 13 14 15 16 17 18 19

Round 1 74 responses, 61% correct

A. 61%
B. 4%
C. 35%
D. 0%
E. 0%

Round 2 75 responses, 83% correct

A. 83%
B. 0%
C. 17%
D. 0%
E. 0%

A positively charged rod is held near a neutral conducting sphere as illustrated below. A positively charged particle is moved from point A to point B



A. positive
B. zero
C. negative
D. depends on the path taken from A to B
E. cannot be determined without knowing more about the polarization induced in the sphere

Search: _____

1 lecture

2 PI

3 PI 2.0

Carrier 9:31 PM learning catalytics skywalker.seas.harvard.edu/class_sessions/399757/review_results Google Eric Mazur | Harvard University | Log out

learning catalytics



A positively charged rod is held near a neutral conducting sphere as illustrated below. A positively charged particle is moved from point A to point B as illustrated below. The potential difference from A to B is



A. positive
 B. zero
 C. negative
 D. depends on the path taken from A to B
 E. cannot be determined without knowing more about the polarization induced in the sphere

Round 1
 74 responses, 61% correct

A. 61%
B. 4%
C. 35%
D. 0%
E. 0%

Round 2
 75 responses, 83% correct

A. 83%
B. 0%
C. 17%
D. 0%
E. 0%

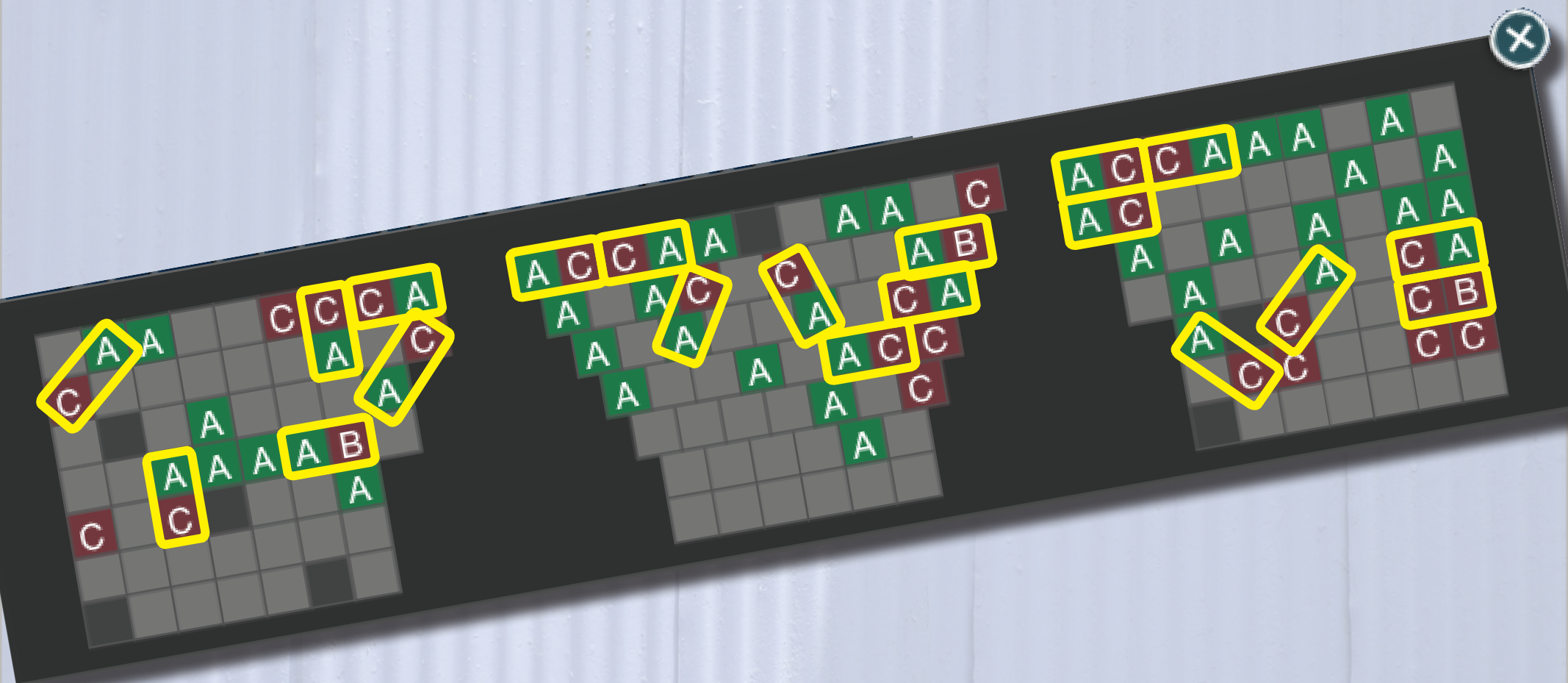
Search: _____

1 lecture

2 PI

3 PI 2.0

let system manage pairing



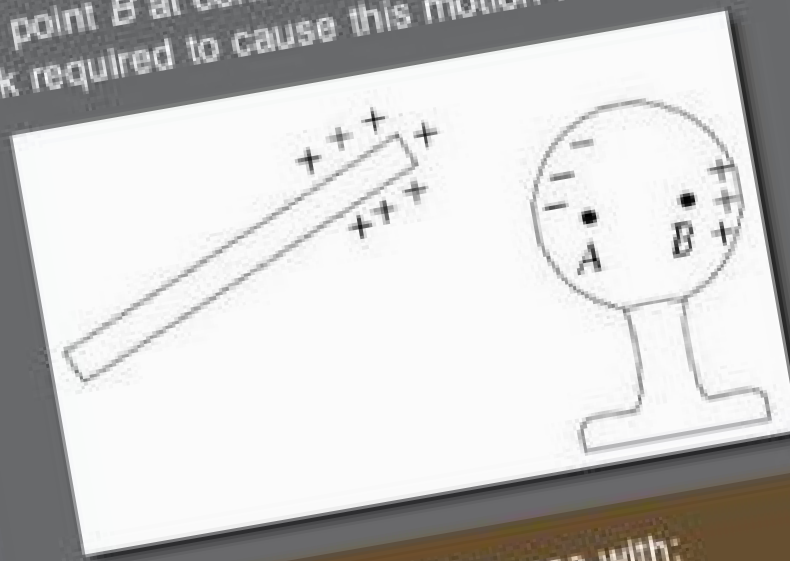
1 lecture

2 PI

3 PI 2.0

Leave

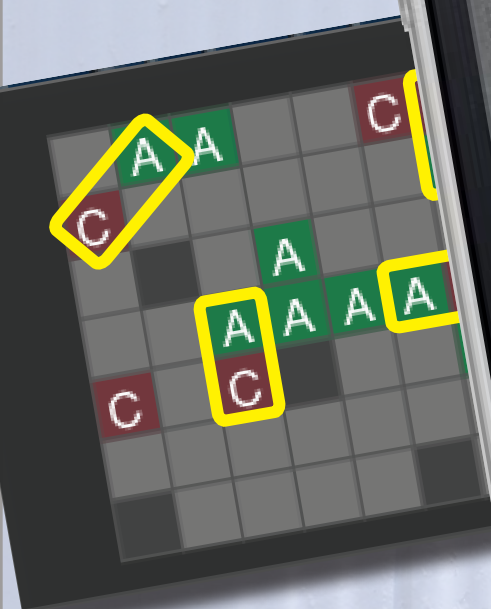
A positively charged rod is held near a neutral conducting sphere as illustrated below. A positively charged particle is moved from point A to point B at constant speed. The mechanical work required to cause this motion is



Please discuss your response with:

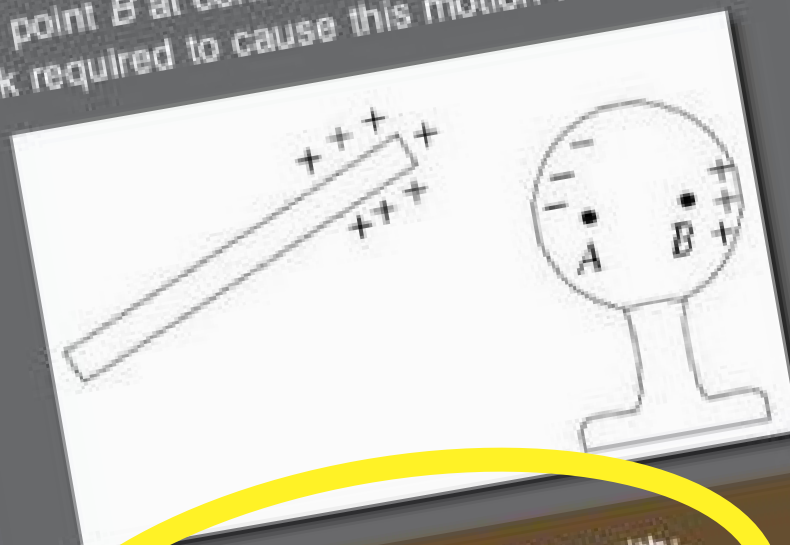
- Brian Lukoff (to your left)

I am talking to this person/people



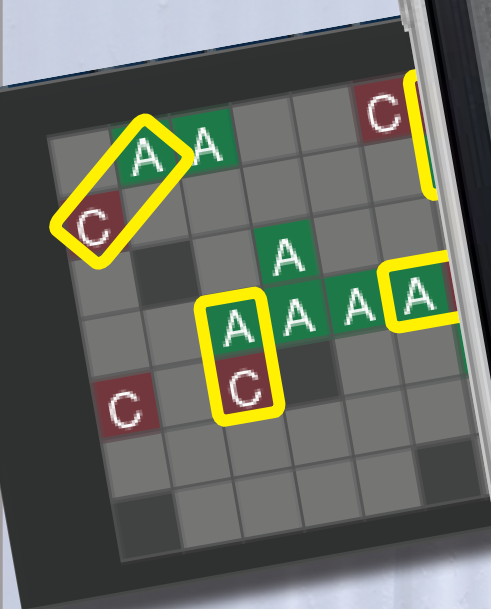
Leave

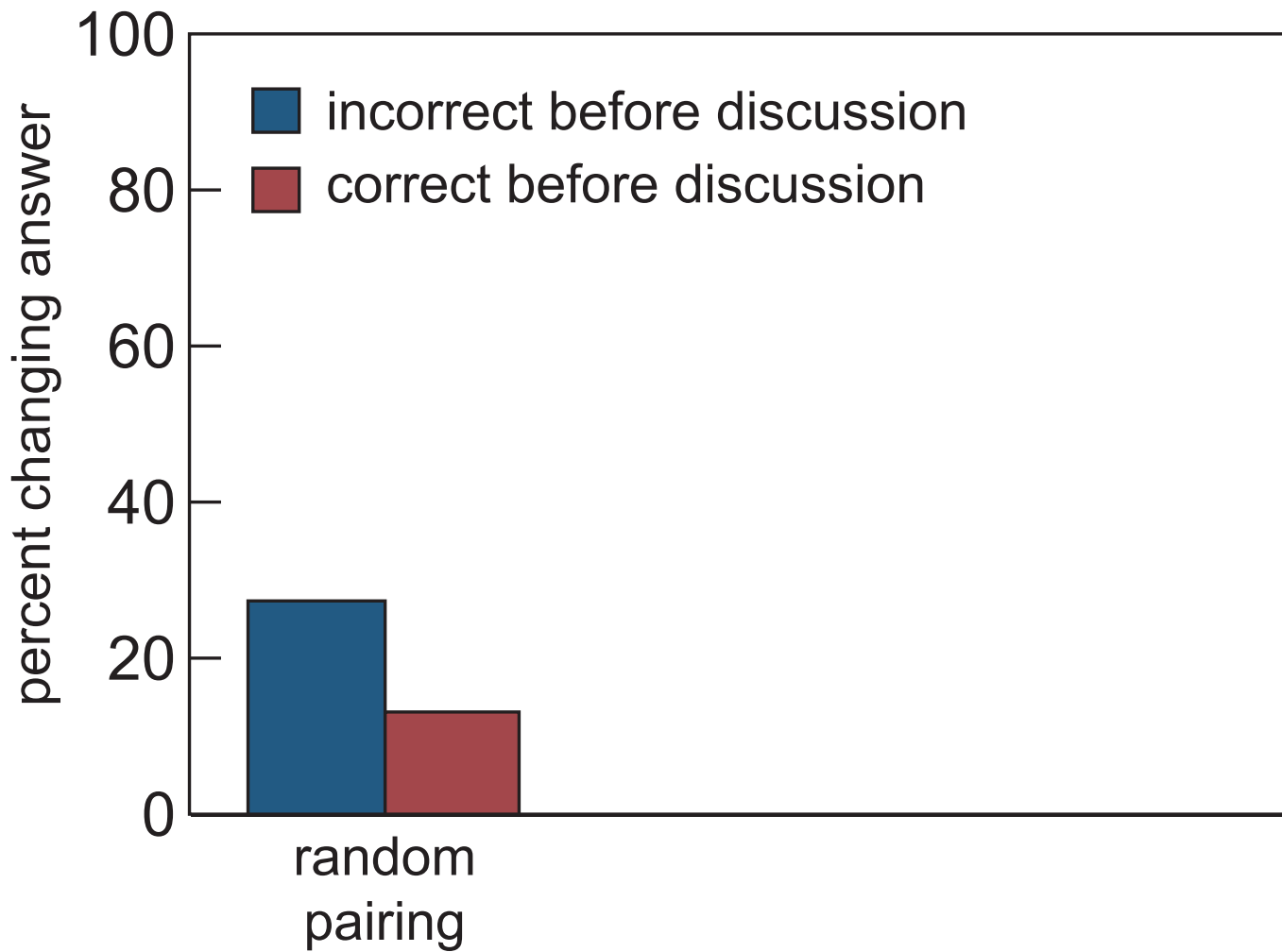
A positively charged rod is held near a neutral conducting sphere as illustrated below. A positively charged particle is moved from point A to point B at constant speed. The mechanical work required to cause this motion is

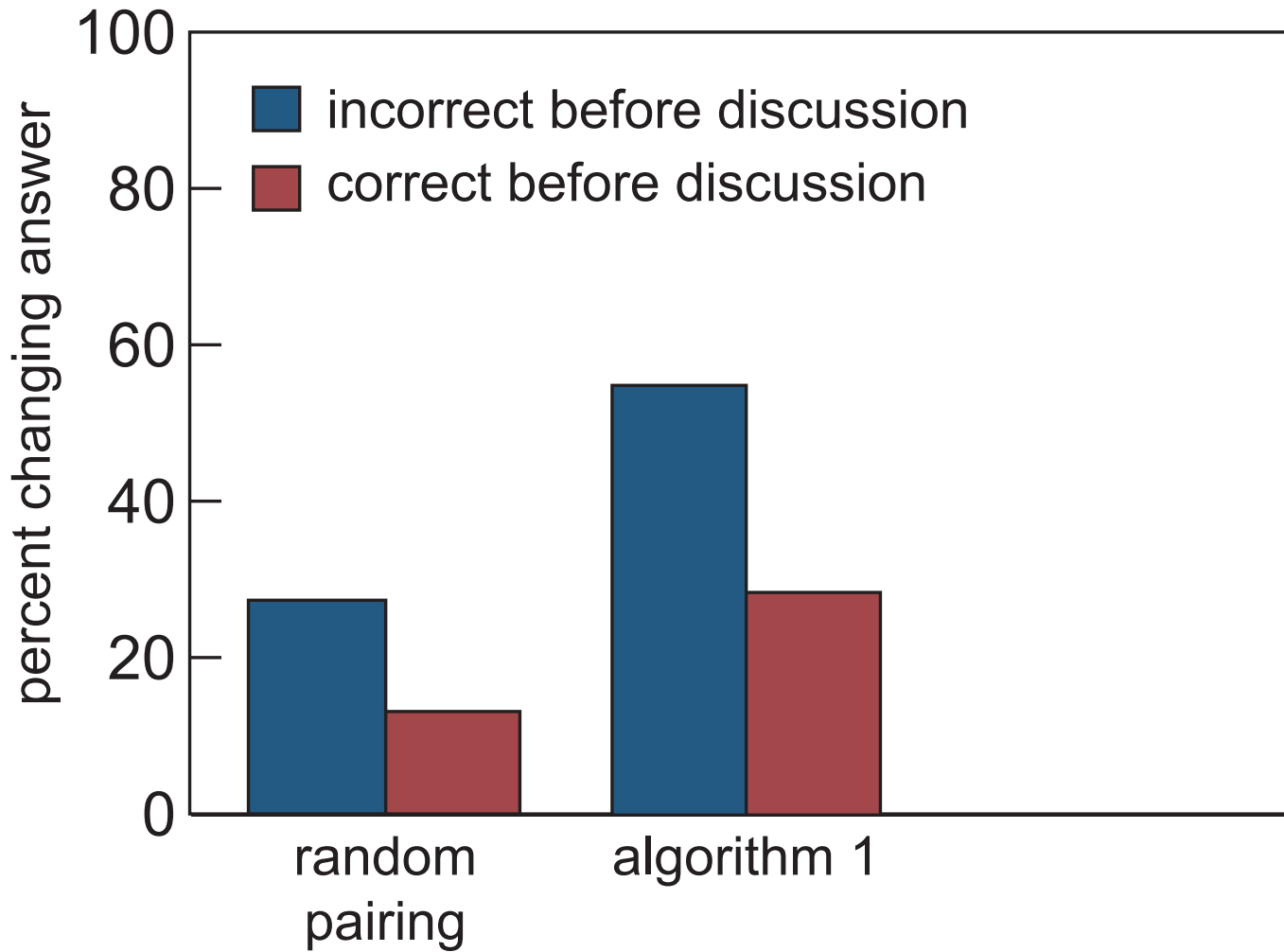


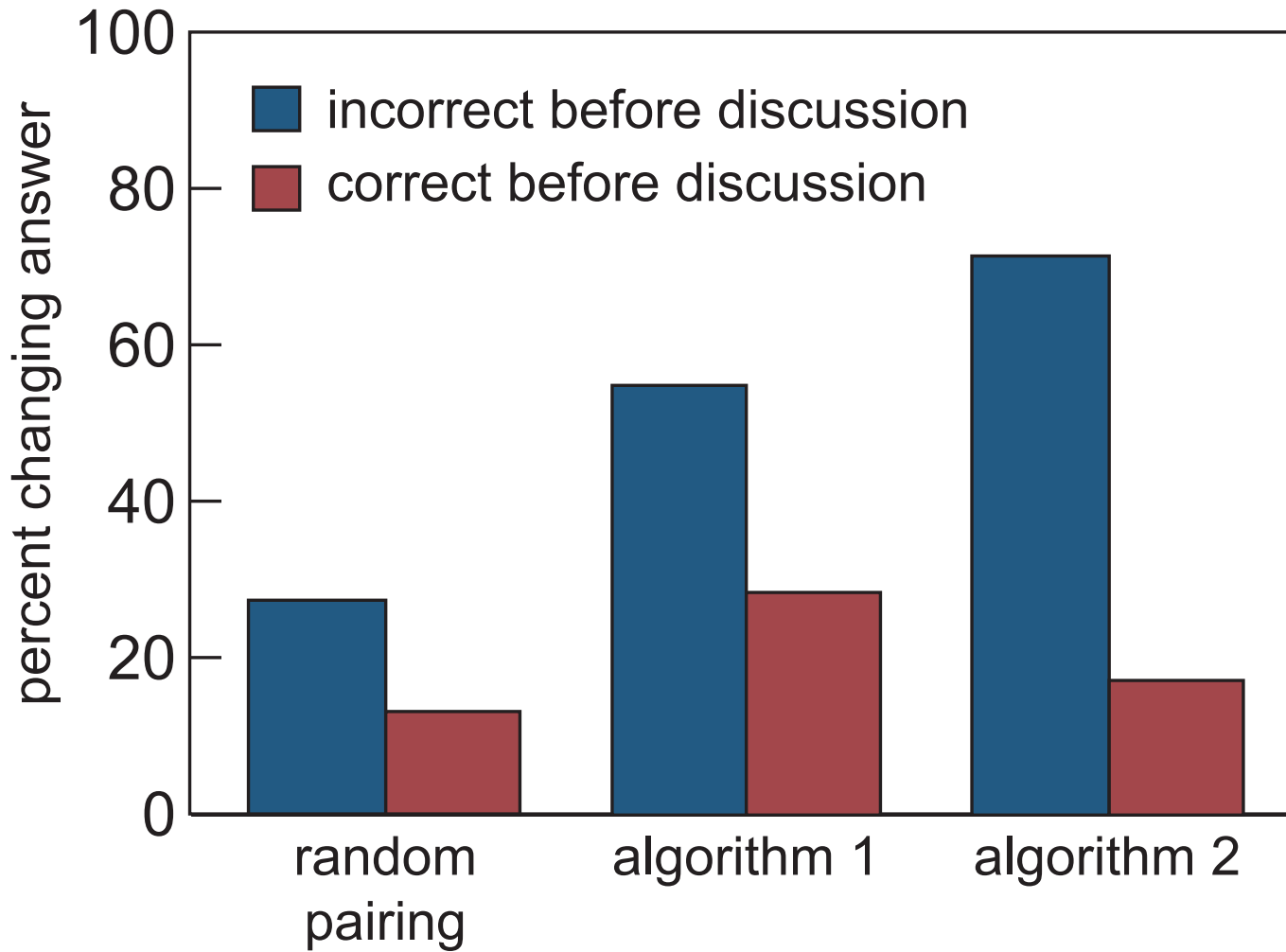
Please discuss your response with:

- Brian Lukoff (to your left)











1 lecture

2 PI

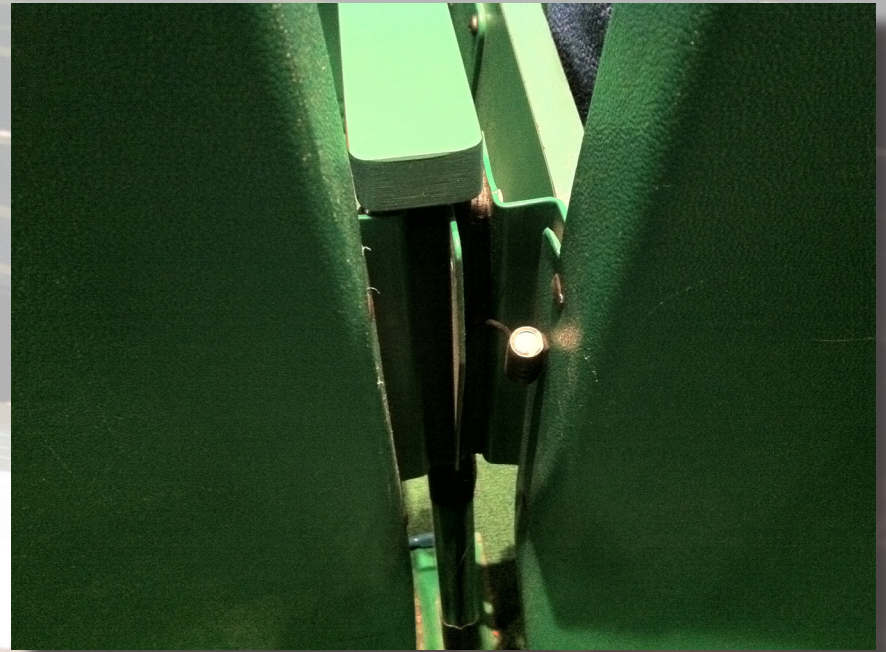
3 PI 2.0



1 lecture

2 PI

3 PI 2.0



1 lecture

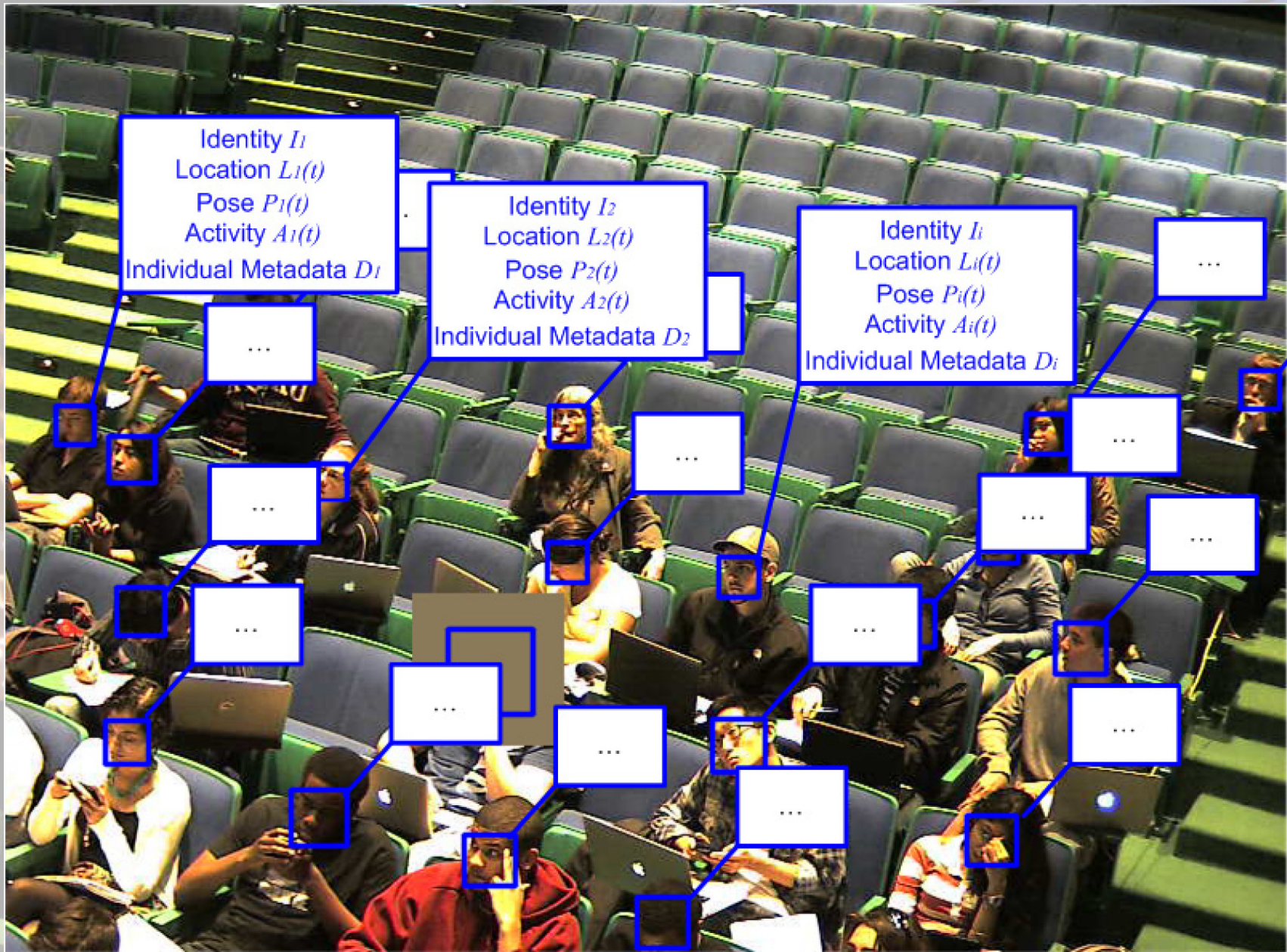
2 PI

3 PI 2.0

1 lecture

2 PI

3 PI 2.0



brief
presentation

1 education

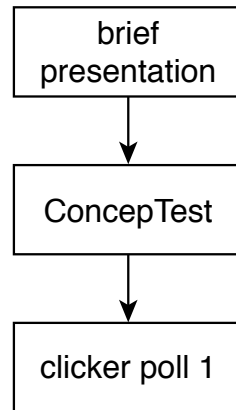
2 PI

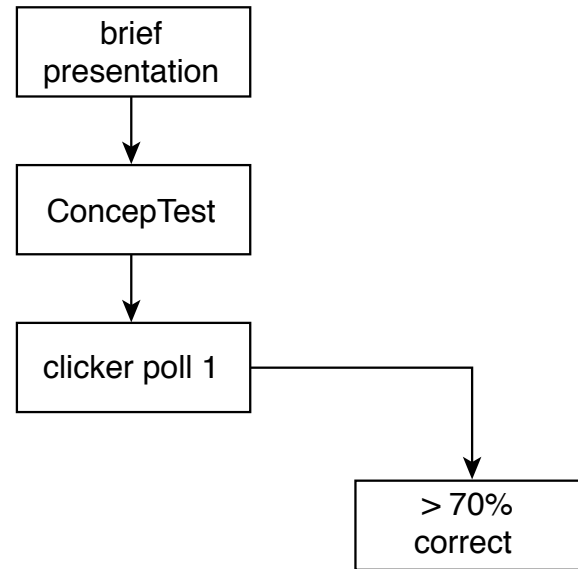
3 PI 2.0

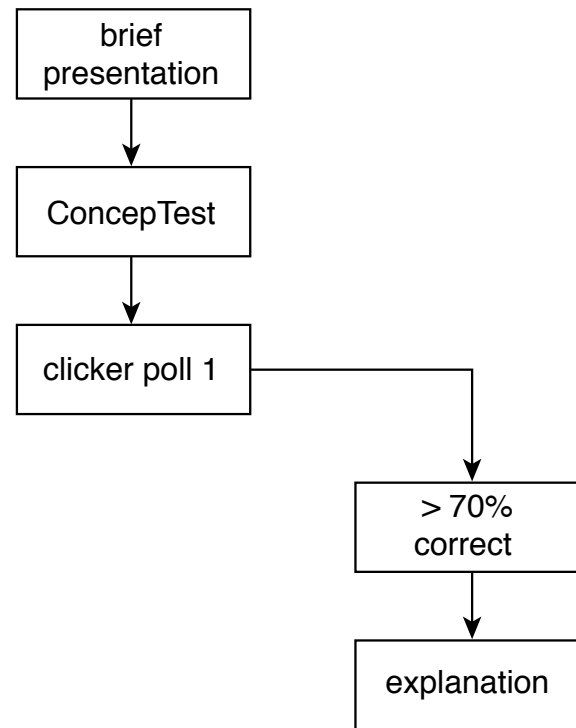
brief
presentation

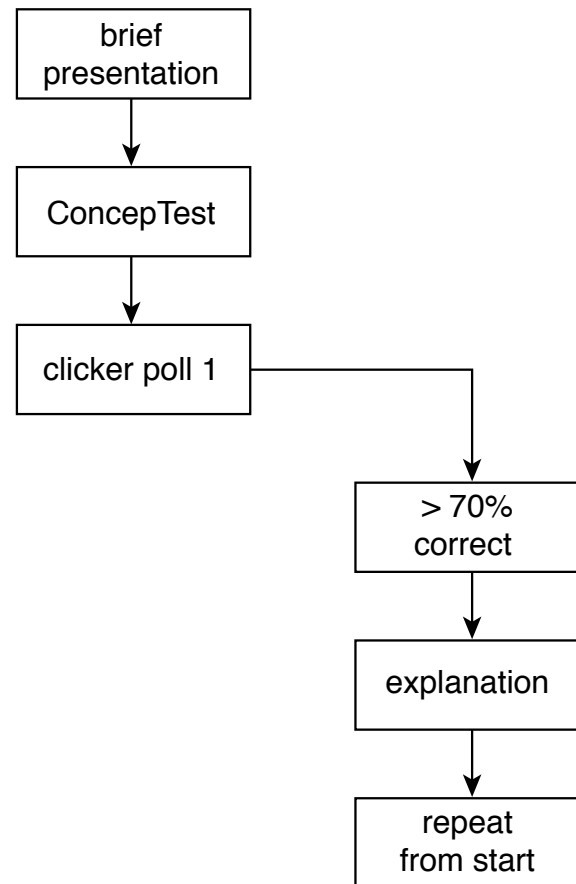


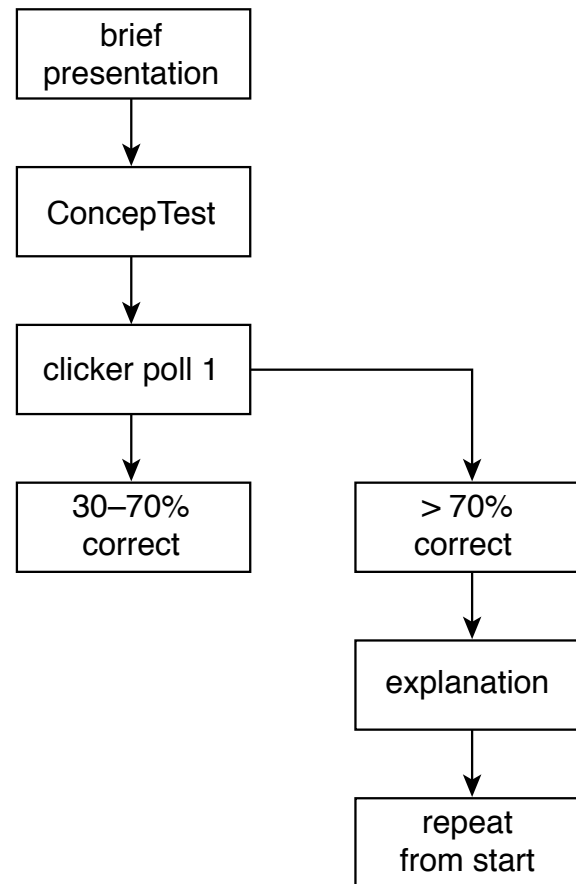
ConcepTest

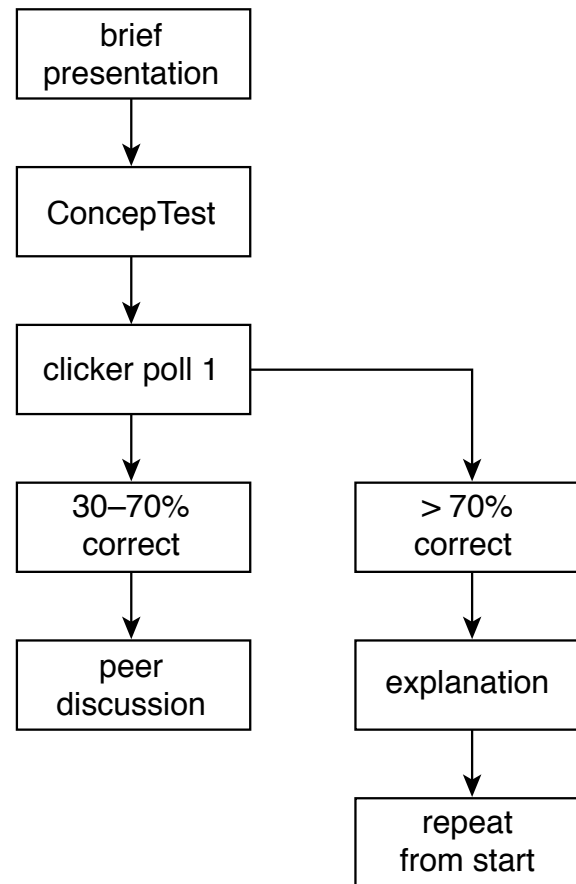


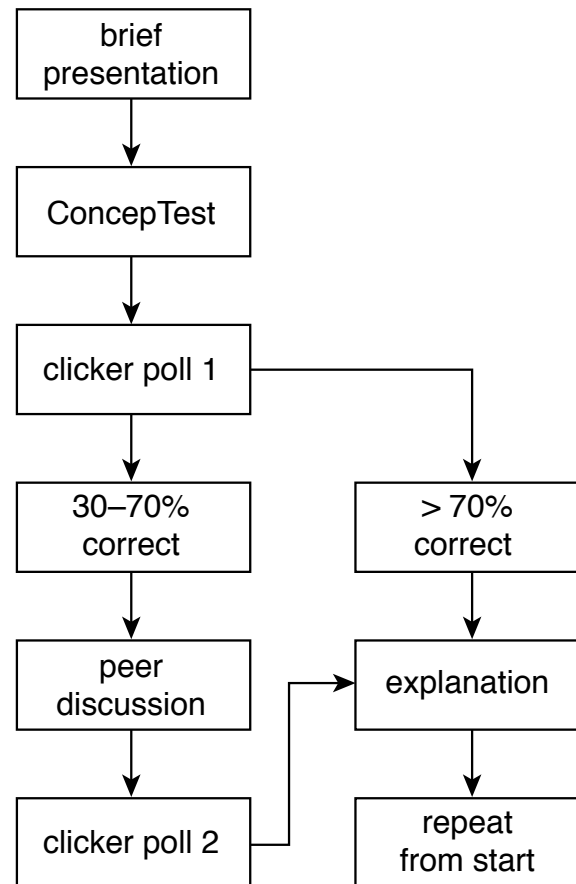


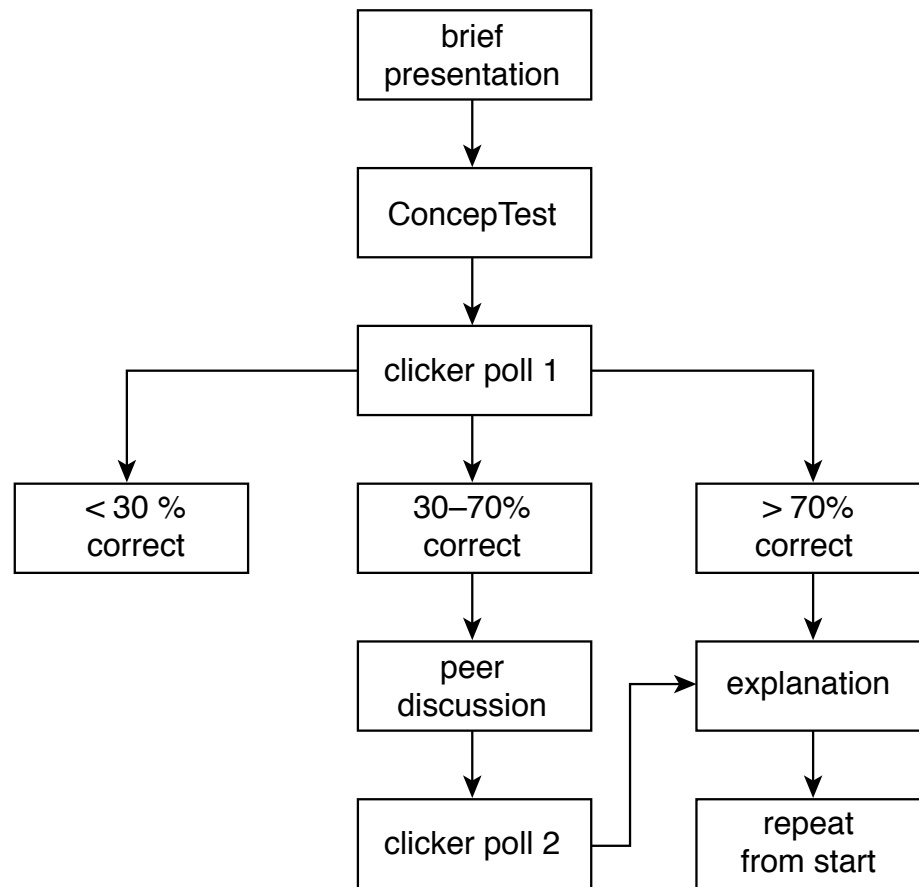


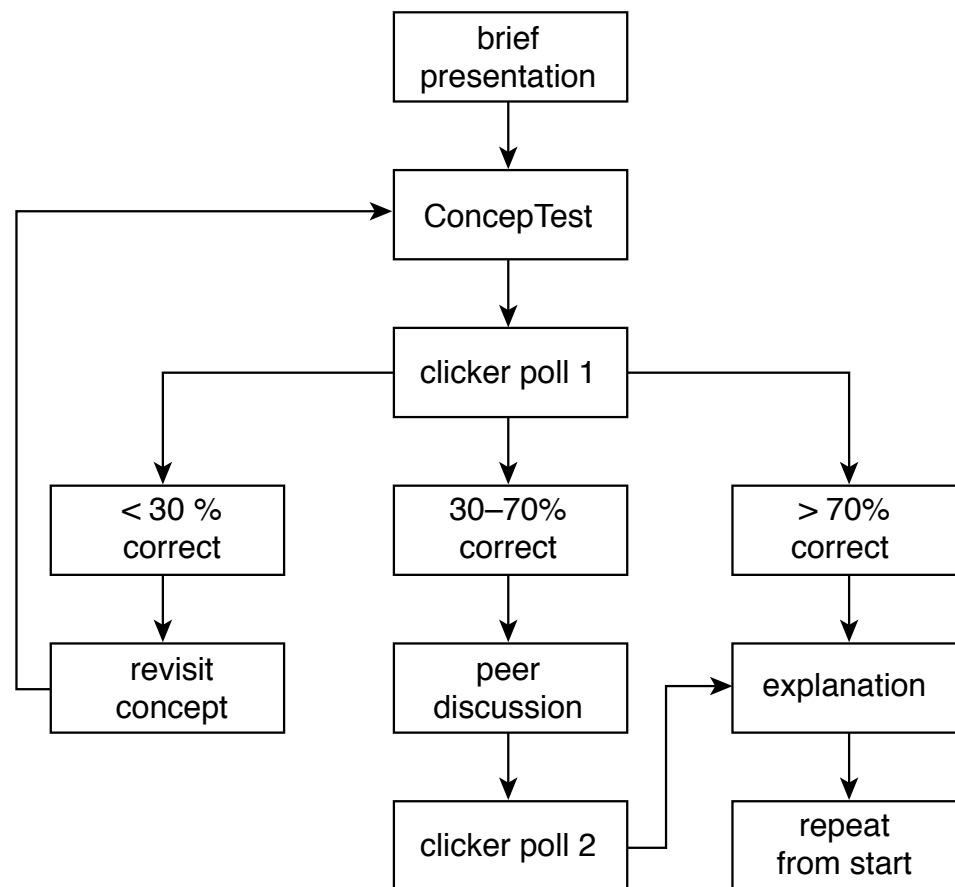


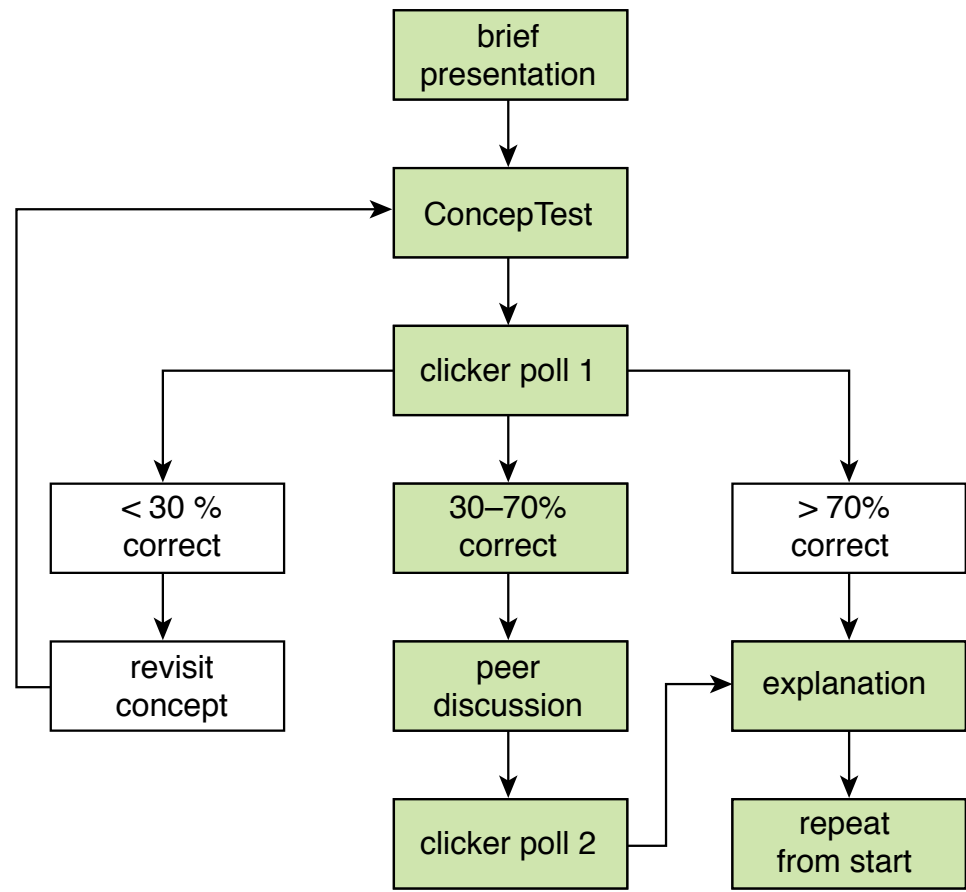


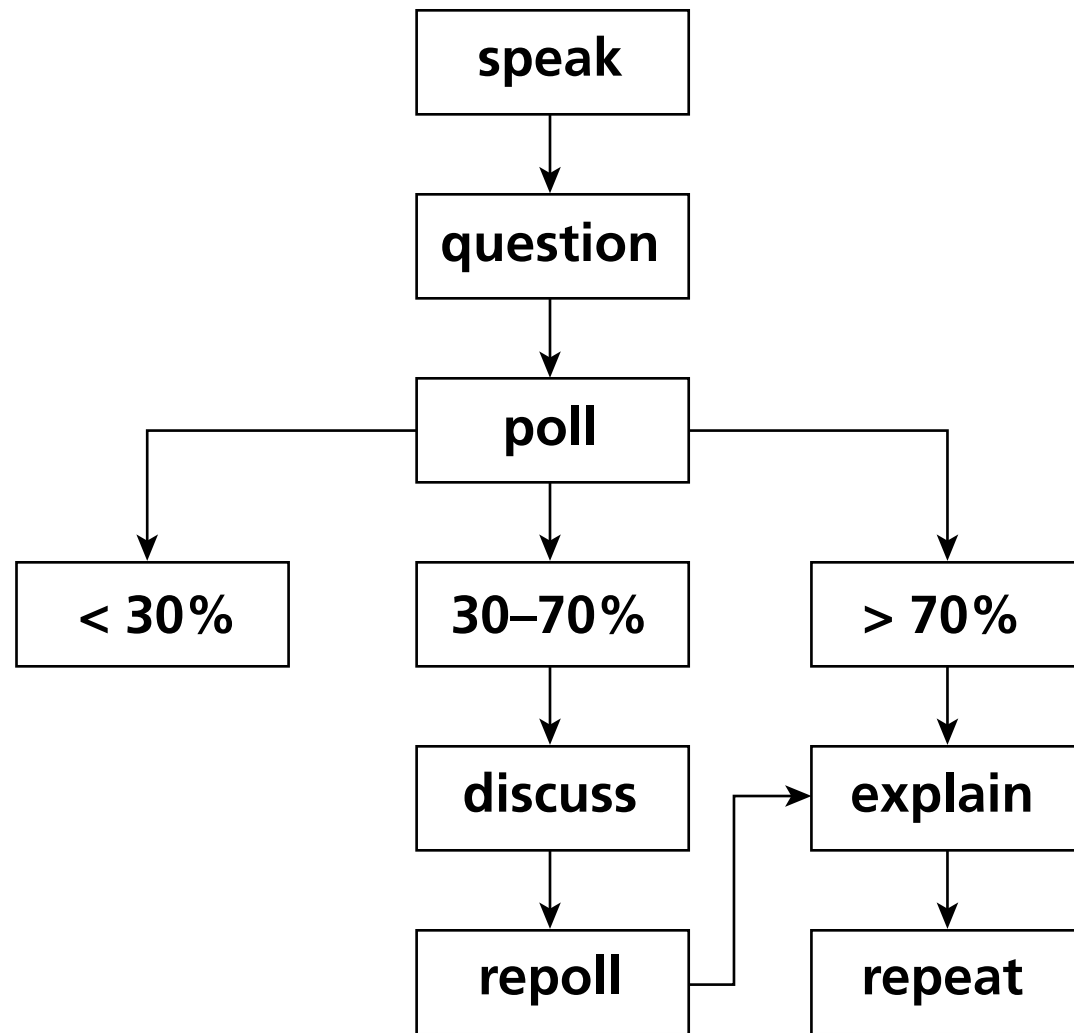


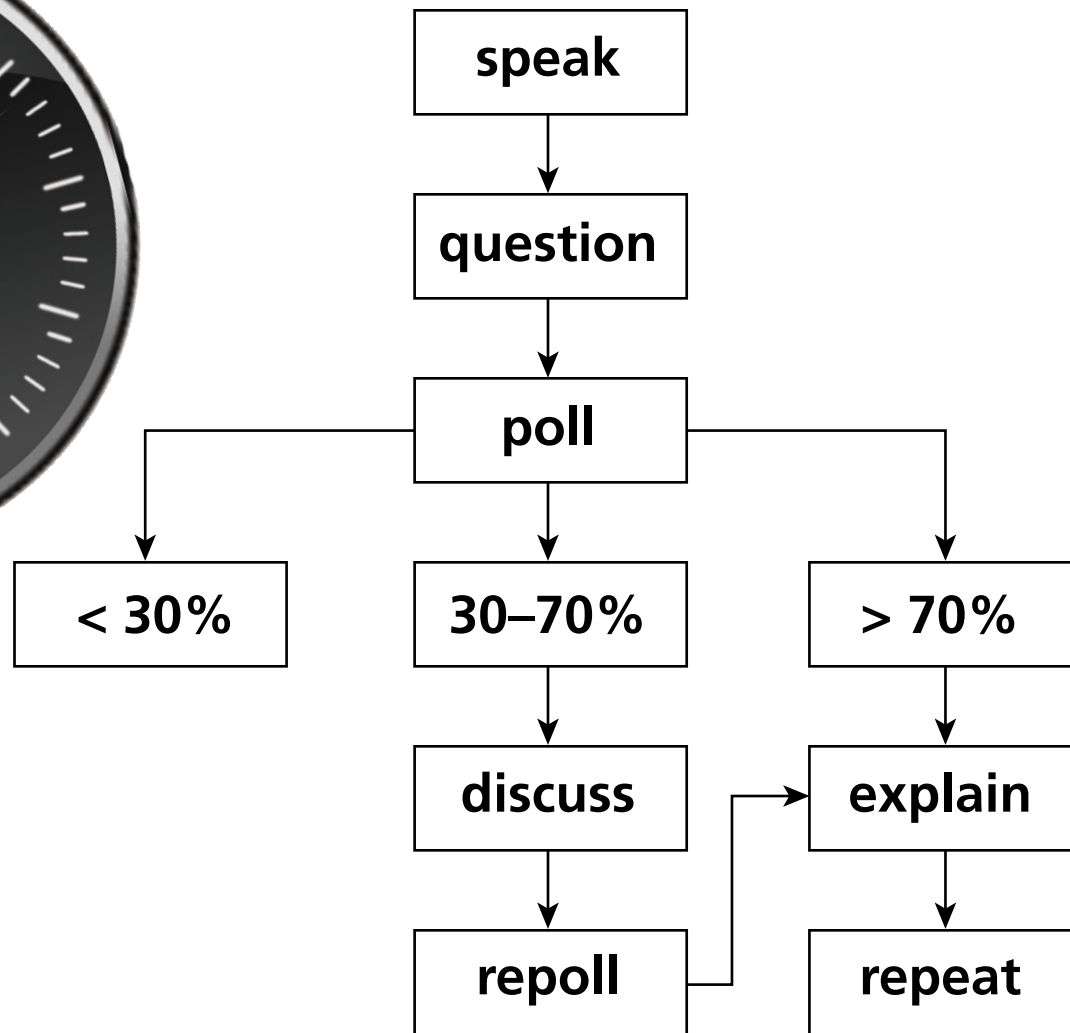














1 lecture

2 PI

3 PI 2.0



1 education

2 PI

3 PI 2.0



Learning Catalytics:

- implement proven, researched pedagogy

Learning Catalytics:

- implement proven, researched pedagogy
- use consumer devices

Learning Catalytics:

- **implement proven, researched pedagogy**
- **use consumer devices**
- **avoid pitfalls of MC assessment**

Learning Catalytics:

- implement proven, researched pedagogy
- use consumer devices
- avoid pitfalls of MC assessment
- create a smart classroom *anywhere*